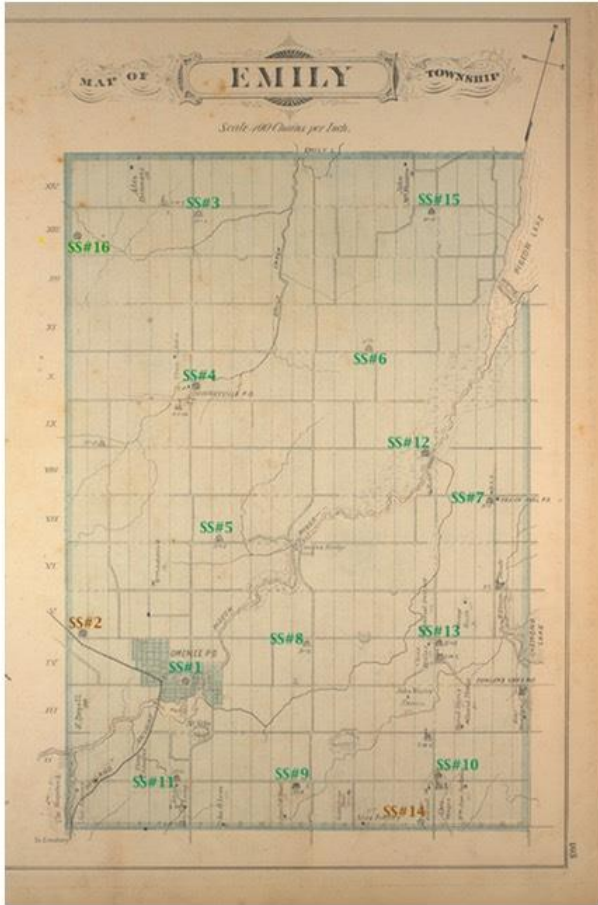


One Room Schools South Victoria

Emily Twp, Victoria County



Schools without photos

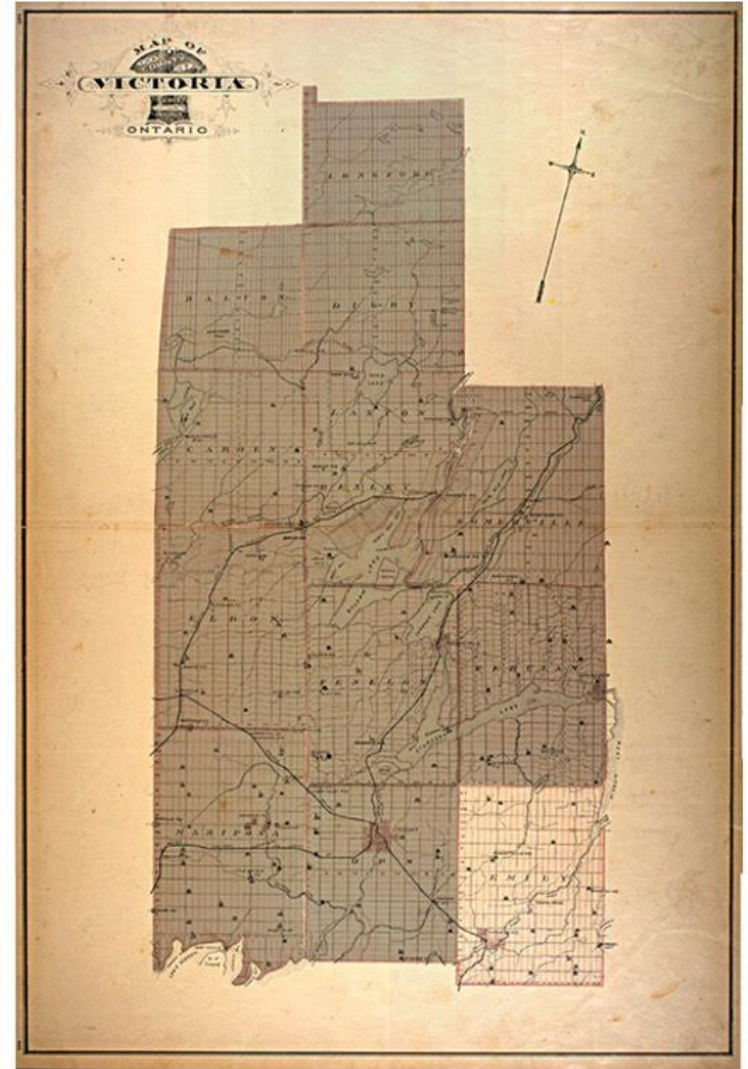
SS #2 Emily West 1840s - 1881

This unnamed school was west of Omeme. It was a union section with Ops for a while, and in 1881 it was cancelled and the students attended SS #1 Omeme. No image exists.

SS #14 1840s - 1873

No image of this school was taken before it was dissolved in 1873. The students were transferred to SS #10 at nearby Orange Corners.

Legend
SS#1 photo present
SS#5 no photo



If you have any information about, or photos of, the early schools in this area, please leave your name and contact information at the booth displaying the "Heritage Registration" sign.

1840 – 1884



Omemee 1834-present

The earliest settlement in Victoria county was at Omemee; thus it is expected the earliest school was established here. The earliest school houses were established here. The earliest school houses were recorded in sketch format. The second school was destroyed by fire in 1884, but it was recorded quick action by residents saved the invaluable library! The next school (pictured) was burnt down in 1904 (this time the library was lost!). The next structure was a massive 2 story/6 room school that featured high school classes as well. It was state of the art with electricity and flush toilets by 1921. Bad news comes in threes, and this school house succumbed to fire as well in 1964! In 1956 a new, consolidated school (Lady Eaton Public School) was opened, and a second school (Scott Young School) was added later to relieve congestion. Omemee Continuation School (opened before 1900) earned a reputation for excellent teaching, and students (including adults) from all over the area attended.

1884 – 1904



1904 – 1964



SS #1 Emily

Omemee



SS #3 Emily

Millersmith

Millersmith School 1840s - 1967

Named after 2 early settlers (Miller & Smith). this school was in the north end of Emily near Dunsford. The first teacher taught for 1 week here, then a week each at Dunsford and Scotch Line Schools in Verulam! A growing school population led to a permanent brick school and a full time teacher in 1877.



SS #4 Emily

Downeyville

Downeyville 1850-present

Most of the local settlers were part of the Peter Robinson settlements of 1824. In 1905, SS #4 was closed by the public school board and became a separate school.



SS #5 Emily

Orange Line

Orange Line 1840s - 1967

In 1875, the inspector of schools suggested a new school was better than repairing the old one and thus a brick school was built. It was one of the few local schools to teach agriculture as a separate subject.



SS #6 Emily

Guiry's

Guiry's School. 1840s - 1962

This section was so poor, a loan of \$600 was advanced by the County School Board so a new school could be built. In 1905, this school was converted to a separate school. In 1962 it was consolidated with Downeyville School.

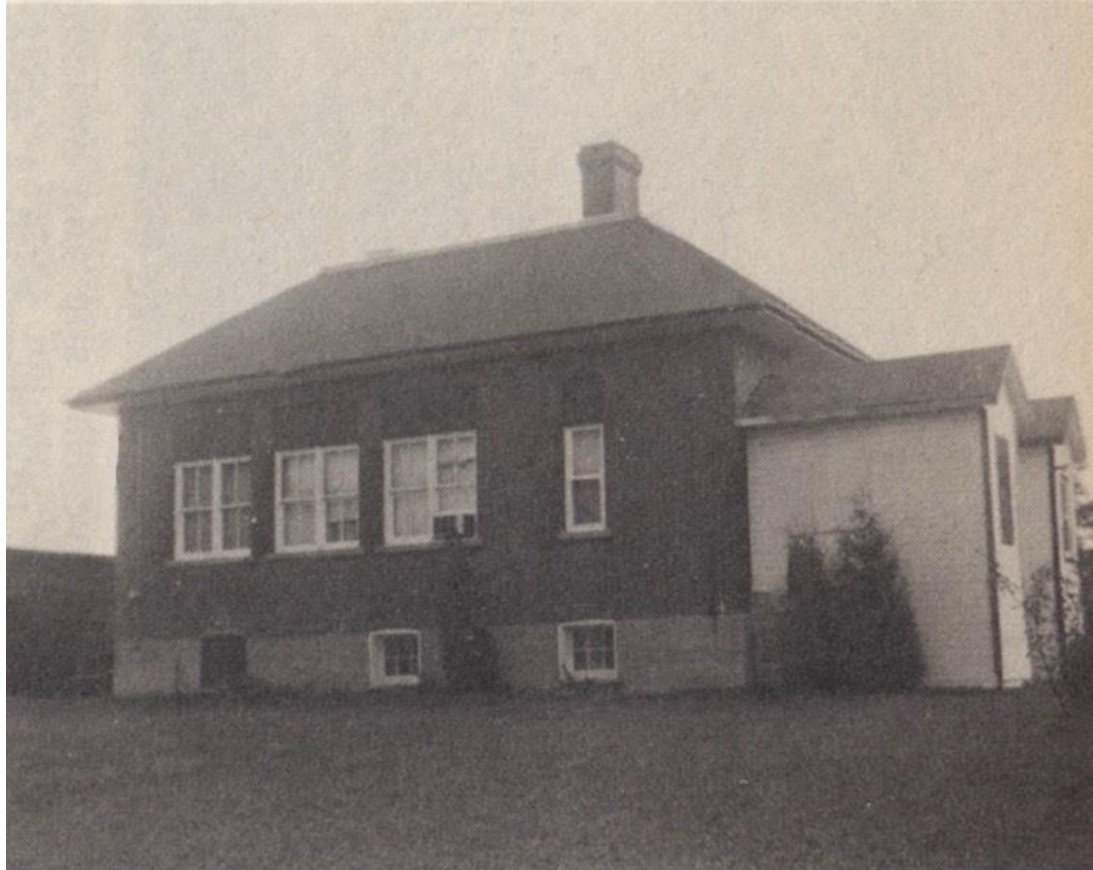


SS #7 Emily

Frank Hill

Frank Hill 1840s - 1967

Despite higher than average attendance for a one room school, the trustees consistently refused to build a larger, brick school house and used the frame school (circa 1875) until consolidation in 1967.



SS #8 Emily

Trotter's School 1840s - 1965 Trotter's

It was noted this school failed to retain teachers and had to hire a new one every year. Its reputation was such that teachers avoided it if possible. One teacher with a 3rd class certificate, taught at both SS #8 and #9 before attempting to obtain his 2nd class certificate at Normal School. He was refused, quoting a "deficiency in aptitude to teach".



SS #9 Emily

Fee's

Fee's School. 1840s - 1967

This school had problems with sufficient enrolment to stay open. Some years, it was closed. Other years, it shared a teacher with SS #8. One inspector remarked "enrolment varied with the quality of teaching".

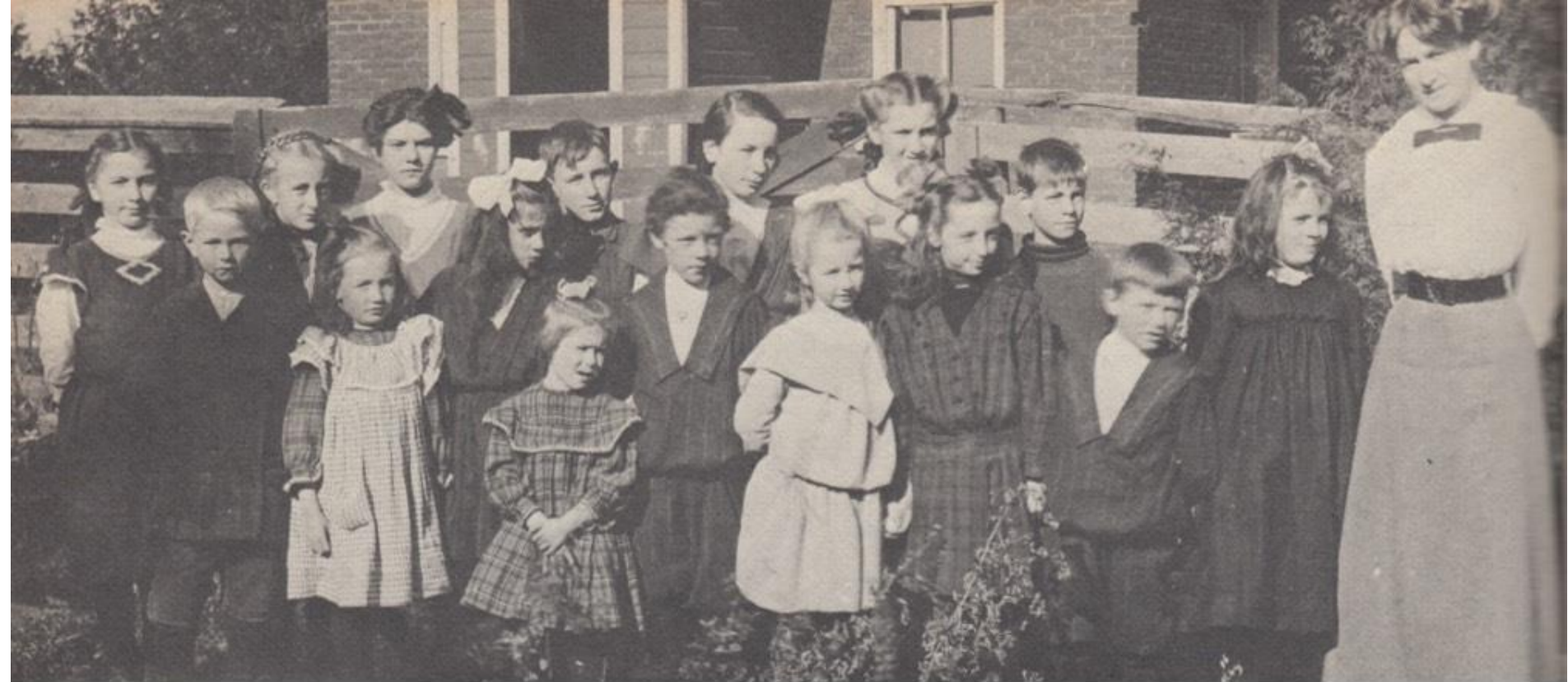


SS10 Emily

Orange Corners

Orange Corners School 1840s - 1966

This school had a on/off amalgamation relationship with SS #14. Several times they joined and then separated, likely based on enrolment. In 1872, the first female teacher in the area was hired by SS #10 for the meagre sum of \$130 per year. It was noted this was considerably less than a male teacher's salary.



Back row: Clara Bannon, Tom Bannon, Bertha Bannon, Victoria Burroughs, Harry Bradley, Beatrice Peacock, Maggie Bannon, Tom Croft.

Front row: Vera Low, Mary Lang, Terressa Latchford, Vernon Lang, Elsie Bannon, Mina Balfour, Harold Lang, (name forgotten), Teacher Miss Grant.

SS #11 Emily

Lang's

Lang's School 1840s - 1965

Erratic enrolment plagued this school. In 1929 only 6 students were registered, so the section boundaries were juggled to add enough new attendees to keep the school open.



SS #12 Emily

Scully's

Scully's School 1840s - 1965

The section started with a log school, went to a brick school and then went to a frame structure; a mixed up order from the usual progression.



SS #13 Emily

Bethel

Bethel School 1840s - 1967

Declining enrolment was a feature of most Emily school before the consolidation of the 1960s. Bethel School had the opposite issue. Enrolment increased in the 1950s to the point where space for excess students was rented in Fowler's Corners. This satellite school was listed as Emily SS #13 East.

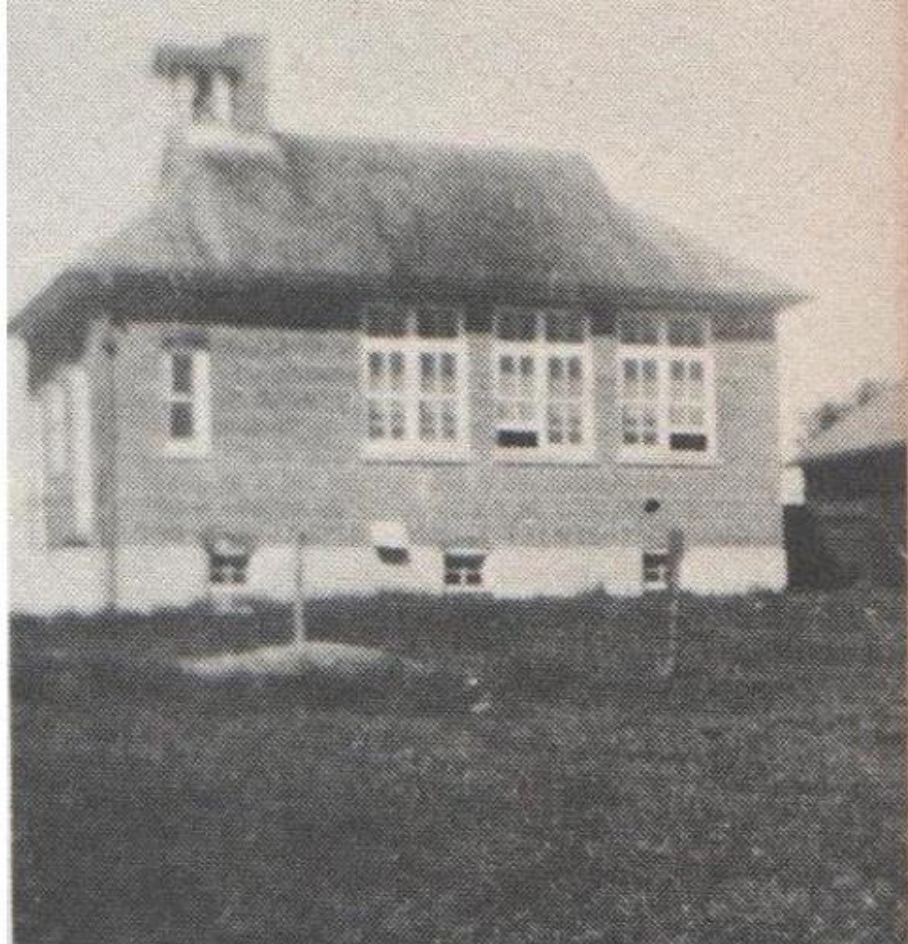


SS #15 Emily

King's Wharf

King's Wharf 1859-1962

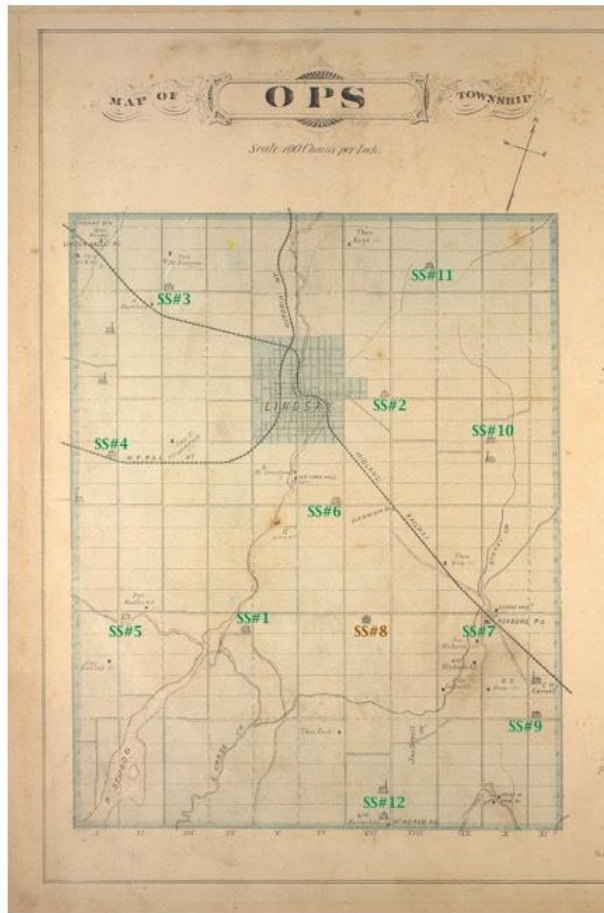
This school had an early log version, replaced by a frame school in 1874. This section never made it to the brick version, and the old frame school was kept going until 1962.



SS #16 Emily

A Union section with Ops, the several versions of this section were sometimes in Ops, sometimes in Emily. The last school was closed in 1966.

Ops Twp, Victoria County



Legend

SS# n Ops school section: photo present

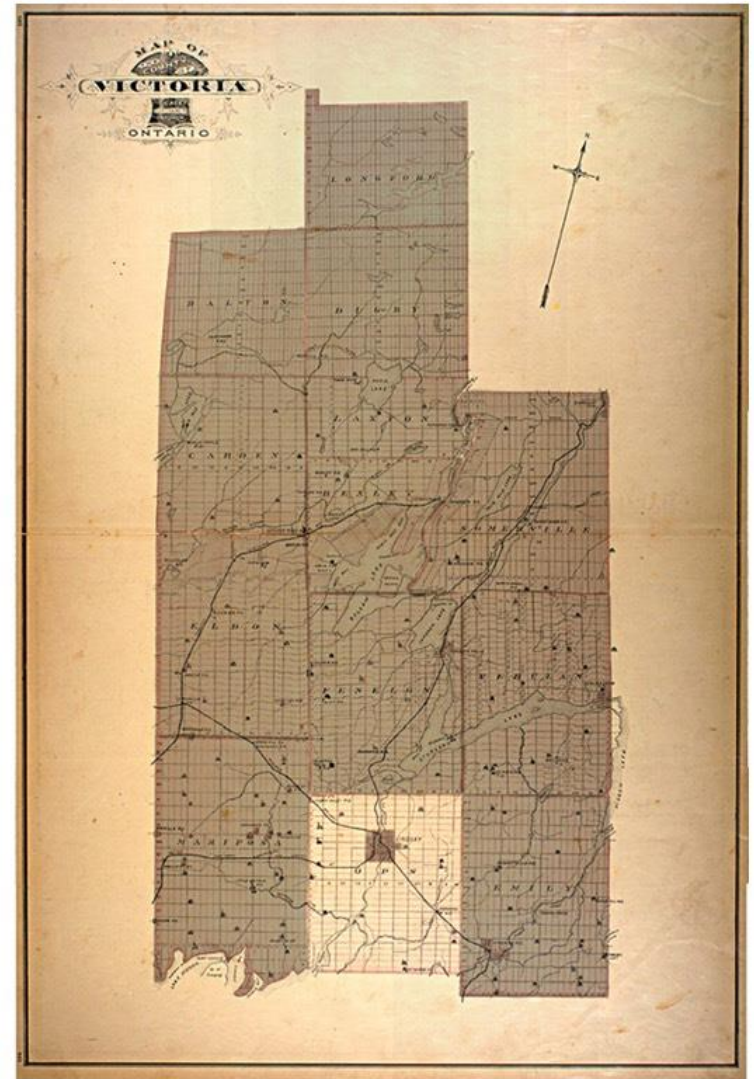
SS# n Ops school section: no photo

Notes

There is no image of SS #8 Hillhead late 1850s - early 1860s.

Ops Township students also attended 4 other union schools: Mariposa SS #14 and SS #21 to the west, SS #16 Emily in the northeast and SS #16 Manvers in the south.

All existing one room schools in Ops were closed when the new Ops Township School opened in 1966. So stable was the student base in Ops, almost all sections were still in operation in 1966.



If you have any information about, or photos of, the early schools in this area, please leave your name and contact information at the booth displaying the "Heritage Registration" sign.



SS #1 Ops

River Road

River Road or Murphy's School 1840-1966

The earliest school in Ops, it was located on the shores of Lake Scugog.

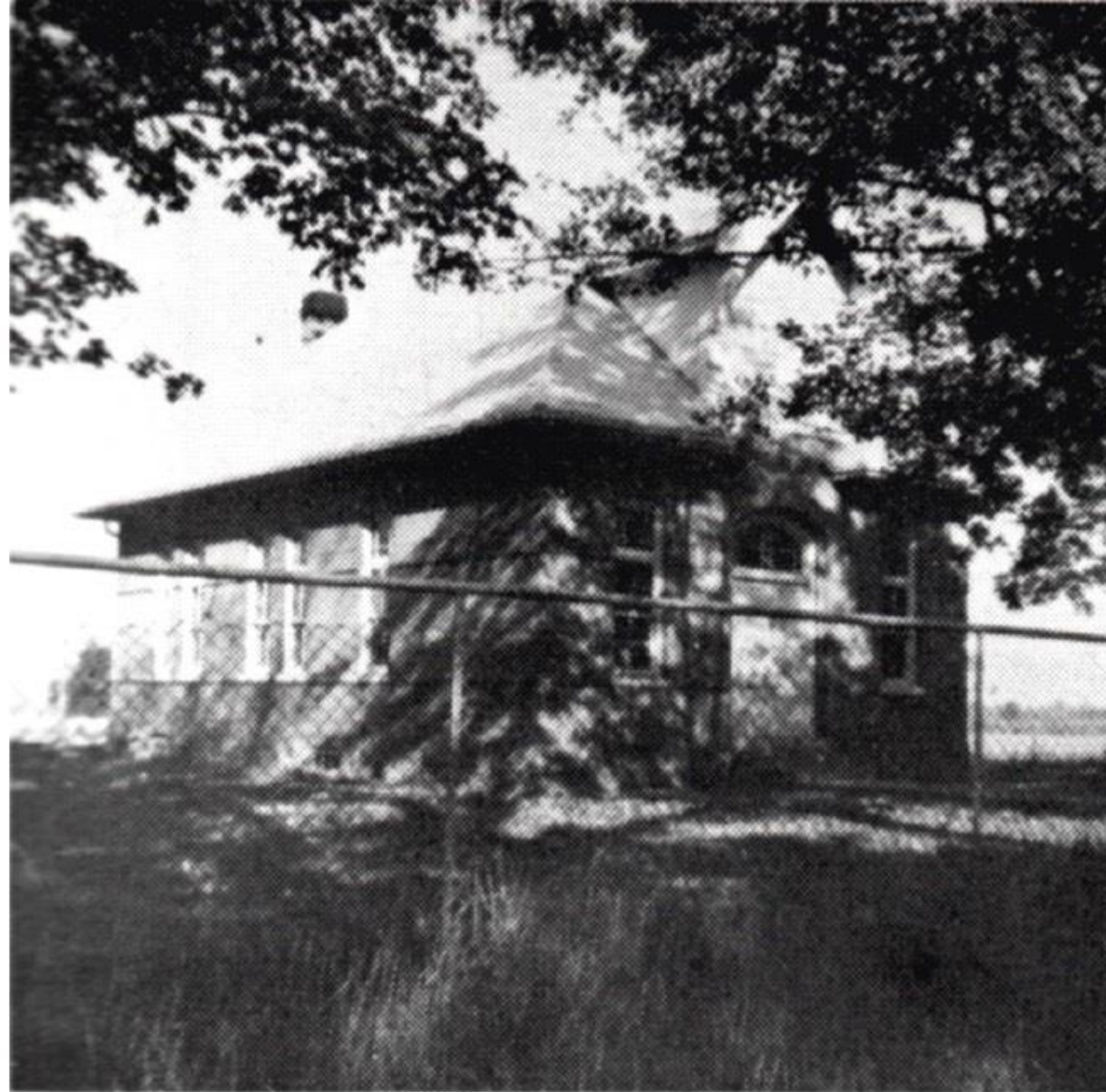


SS #2 Ops
Downyville Road

Downeyville Road School 1844-1954

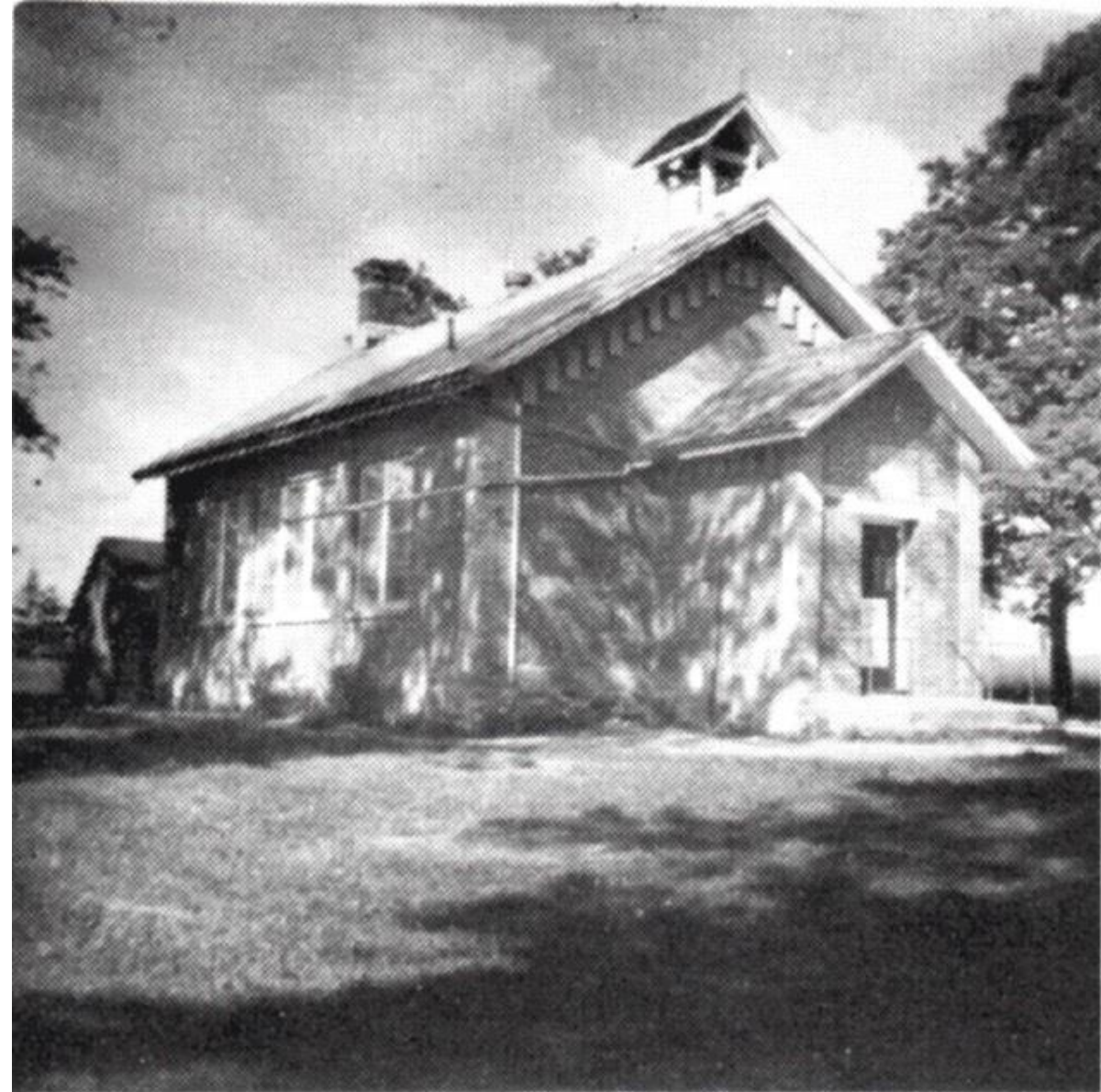
One of the earliest brick school houses in the area (1854). It burned down in "mysterious circumstances" in 1954 and was never replaced.

SS #3 Ops
Bryson's



Bryson's School 1844-1966

At the height of the rural population boom in the 1890s, this school had over 100 students in attendance. What would happen if everyone showed up the same day?



SS #4 Ops
Connelly's

Connelly's School mid 1840s - 1966

The earliest log school was a mere 15' X 18' and had a dirt floor! In 1865 it was replaced by a brick school. This was a union section with Mariposa after 1872.

SS #5 Ops
Kenney's



Kenney's School 1840s - 1966

This school went through the regular progression of buildings: log to frame to brick by 1885.



SS #6 Ops

McArthur's

McArthur's School 1840s- 1966

A frame school house had replaced the original log shanty as early as 1850.



SS #7 Ops
Reaboro

Reaboro School 1844-1966

The hamlet of Reaboro had enough students to make this school operate 2 rooms! Continuation classes were offered briefly, but cancelled due to low enrolment: Lindsay was just too close!

SS #9 Ops
Reas



Rea's School 1849-1966

Its proximity to the "settler Road" from Omeme led this school to claim the title of the oldest school in Ops, even though it was not numbered #1.



SS #10 Ops

Salem

Salem School 1836-1966

Like many Ops schools, Salem School opened and closed several times before becoming permanent in 1865. Also like the other Ops schools it was closed in a township wide amalgamation in 1966 and the students bussed to the new Ops Central School.

SS #11 Ops
Jackson's



Jackson's School 1840s - 1966

In 1853 Jackson's School was closed down and students shipped to Fenelon SS #7. The reason: it was surrounded by swamps, too isolated and too poor. By 1859, it was back in business with a new log school.

SS #12 Ops
Mt. Horeb

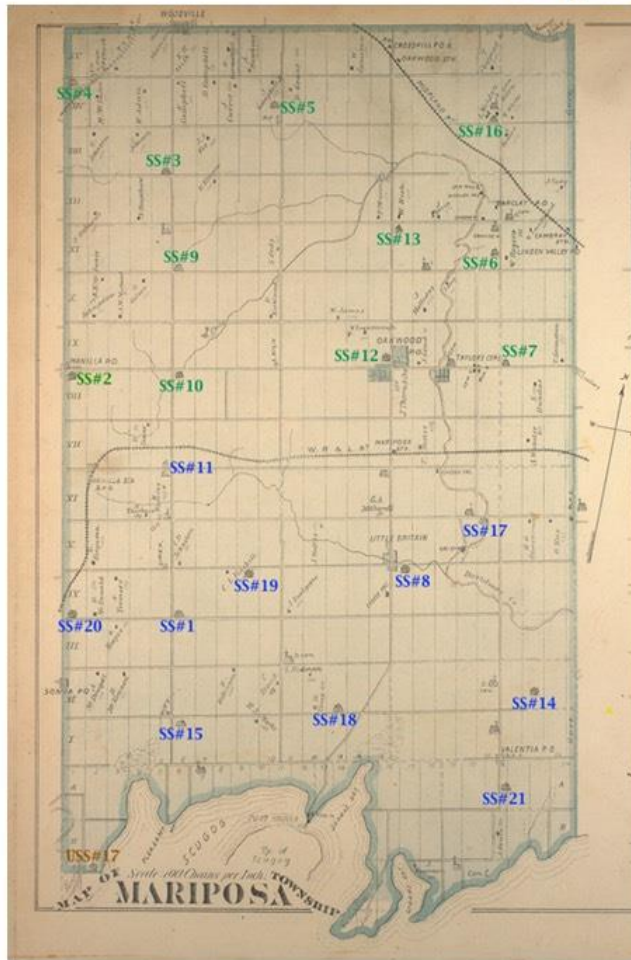


Mt Horeb School 1840s - 1966

A union section on the Manvers Township border, it covered a large area around the now gone hamlet of Mt Horeb. At its peak, SS #12 had an enrolment of well over 100 students and required a new school house! (1875)

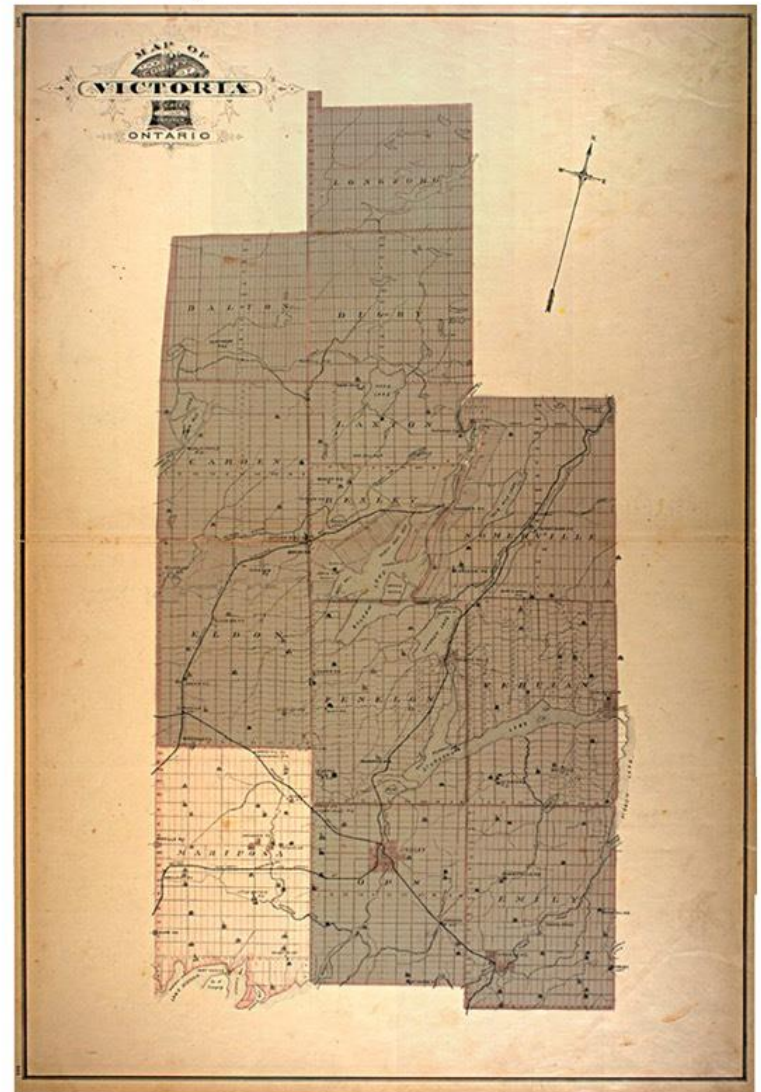
Mariposa Twp, Victoria County

South

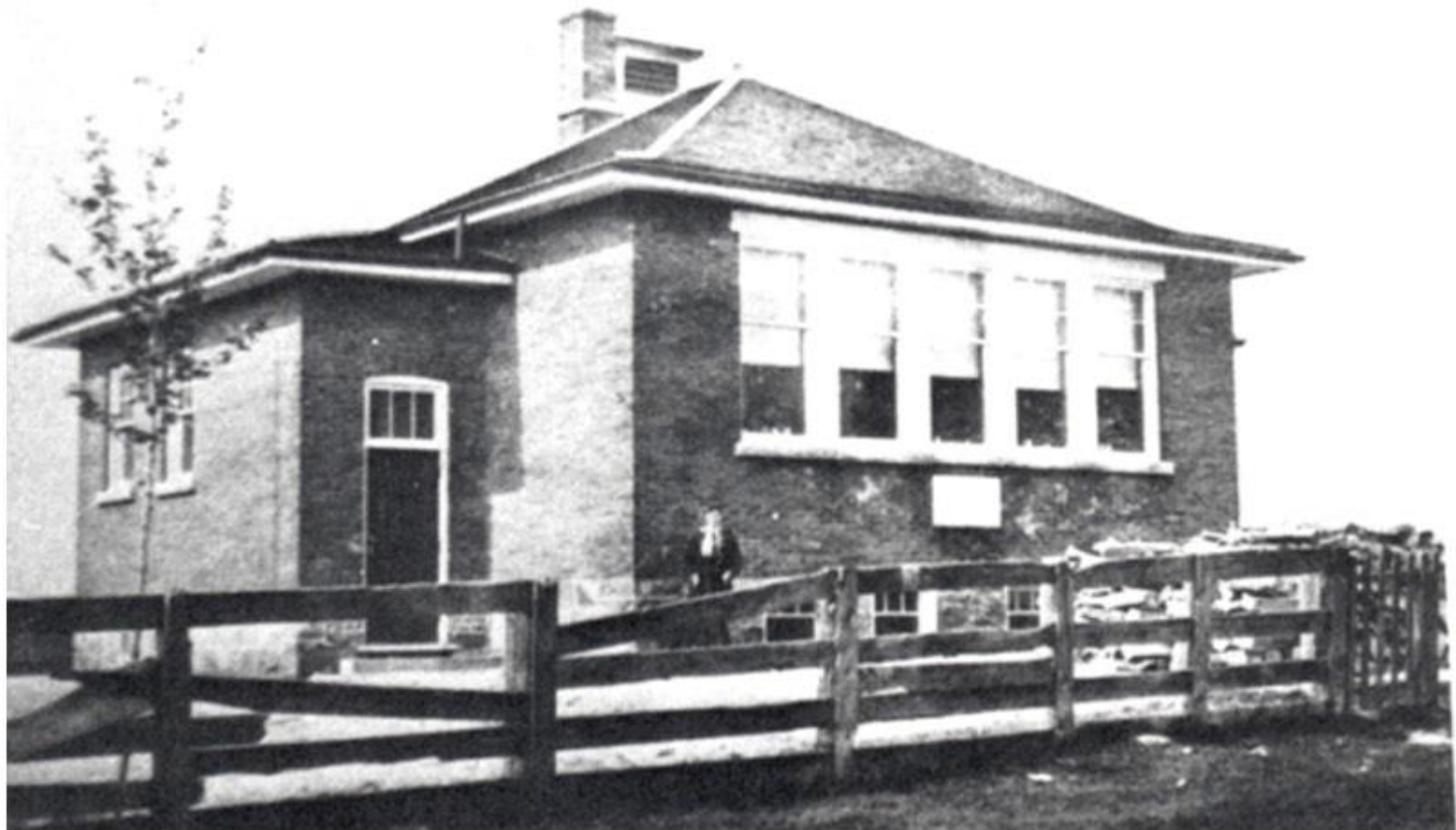


Legend

- SS#n** Mariposa school section (north): photo present
- SS#n** Mariposa school section (south): photo present
- SS#n** Mariposa school section: no photo



If you have any information about, or photos of, the early schools in this area, please leave your name and contact information at the booth displaying the "Heritage Registration" sign.



SS #1 Mariposa

Braules

Braule's School or Fingerboard School.

1830s - 1972

Mariposa Township

Mariposa Township has the richest farmland in Victoria County and hence contained the most farm residences and the most school sections (23 including union sections!). It also contains the most brick school houses still in use (as homes!). You don't have to drive very far to find well restored, gorgeous school houses now used as private residences. In Mariposa, they built their schools to last!

Log schools in Mariposa Township started to dot the landscape in the 1830s. But the first ordering of the township schools was in 1842. Thus SS #1 was not the oldest school section, it was just designated first!

The earliest schools were of log construction, but within 5-10 years, frame schools had mostly replaced the log structure. But as the school populations surged throughout the mid 1800s, larger brick schools were the third progression in school house construction. These brick schools lasted until amalgamations finished the one room school sections after 1965.

In 1945 Mariposa Township School Board began reorganizing its 21 schools into 3 school areas for administration. By 1972 all the one room schools were closed in favour of consolidated schools at Oakwood, Little Britain and Woodville.

SS #2 Mariposa

Manilla

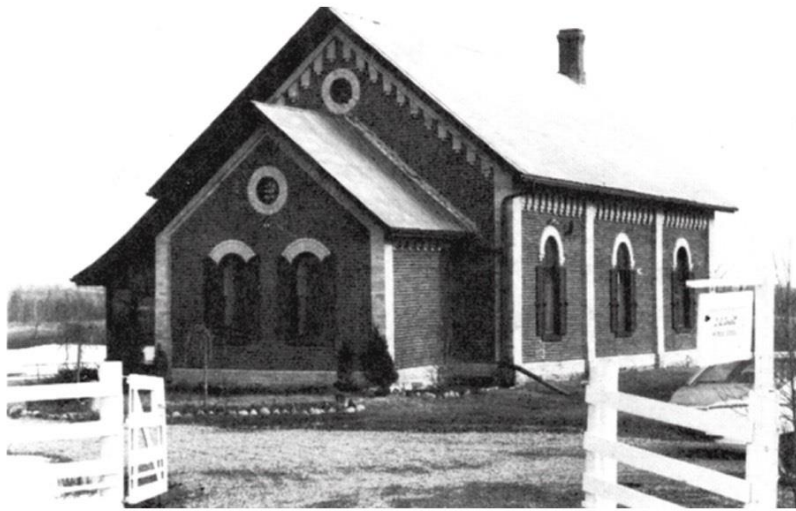
1837-1972 Maybe the earliest school in Mariposa, it was a union school with Brock Township on an early route into Lindsay from Beaverton. So important was the village of Manilla in pioneer days, that a Grammar (High) School was opened at Manilla in 1864! The High School was discontinued by 1872, but a new two-story brick school that was opened in 1889 (and still standing!) testifies to the size of the Manilla student body.



SS #3 Mariposa

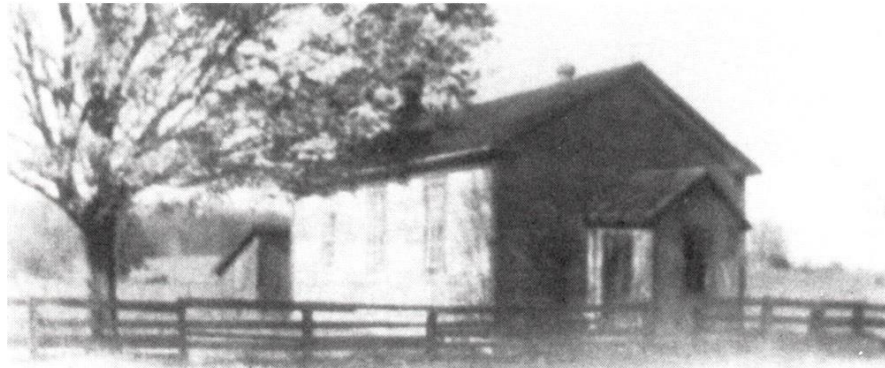
Black's

Black's School at "Blackville"
south of Woodville 1836-1965.



SS #4 Mariposa

McIndoo's
McIndoo's School (union with
Brock Township) 1844-1965



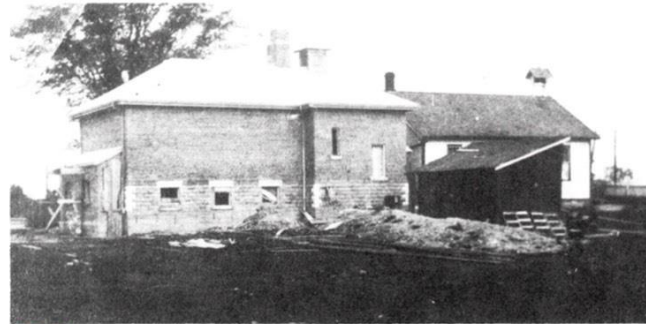
SS #5 Mariposa

Grant's
Grant's School 1843-1945. Closed due to
falling enrolment & merged with Woodville.



SS #6 Mariposa
Quaker

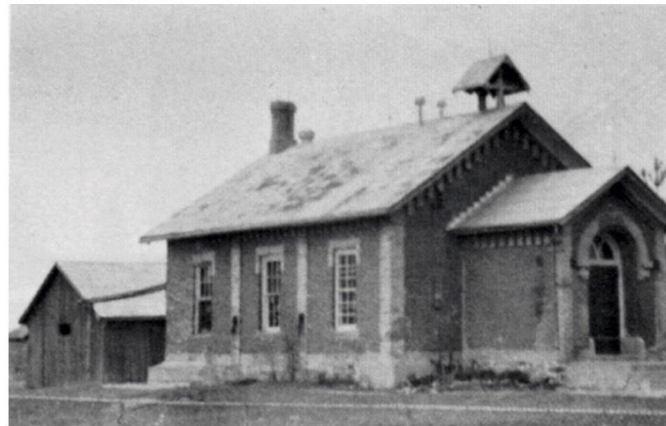
Quaker School. Also known as Knob School, Barclay's School and Linden Valley School. North of Taylor's Corners. 1844-1965



SS #7 Mariposa

Taylor's Corners / East Oakwood

Taylor's Corners or East Oakwood 1842-1972
Now a school board maintenance shop.



SS #9 Mariposa
Wylie's

Wylie's School. Also known as Peniel or Cedar Grove. 1845-1972

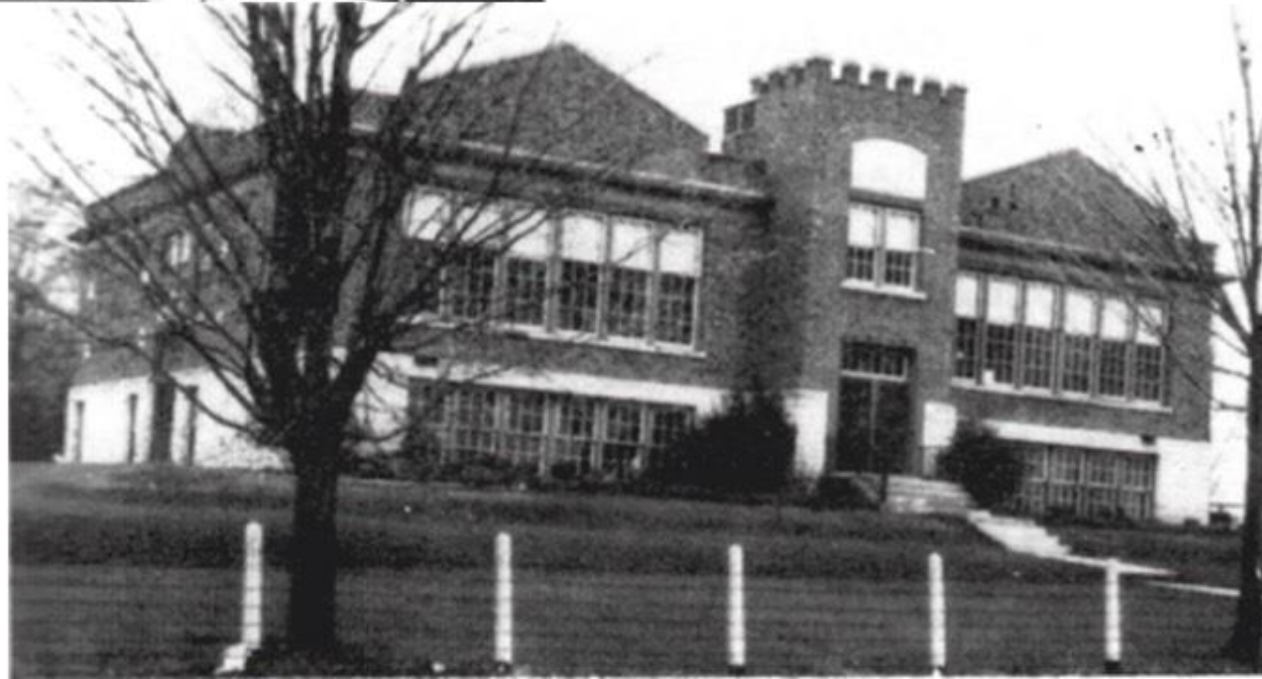


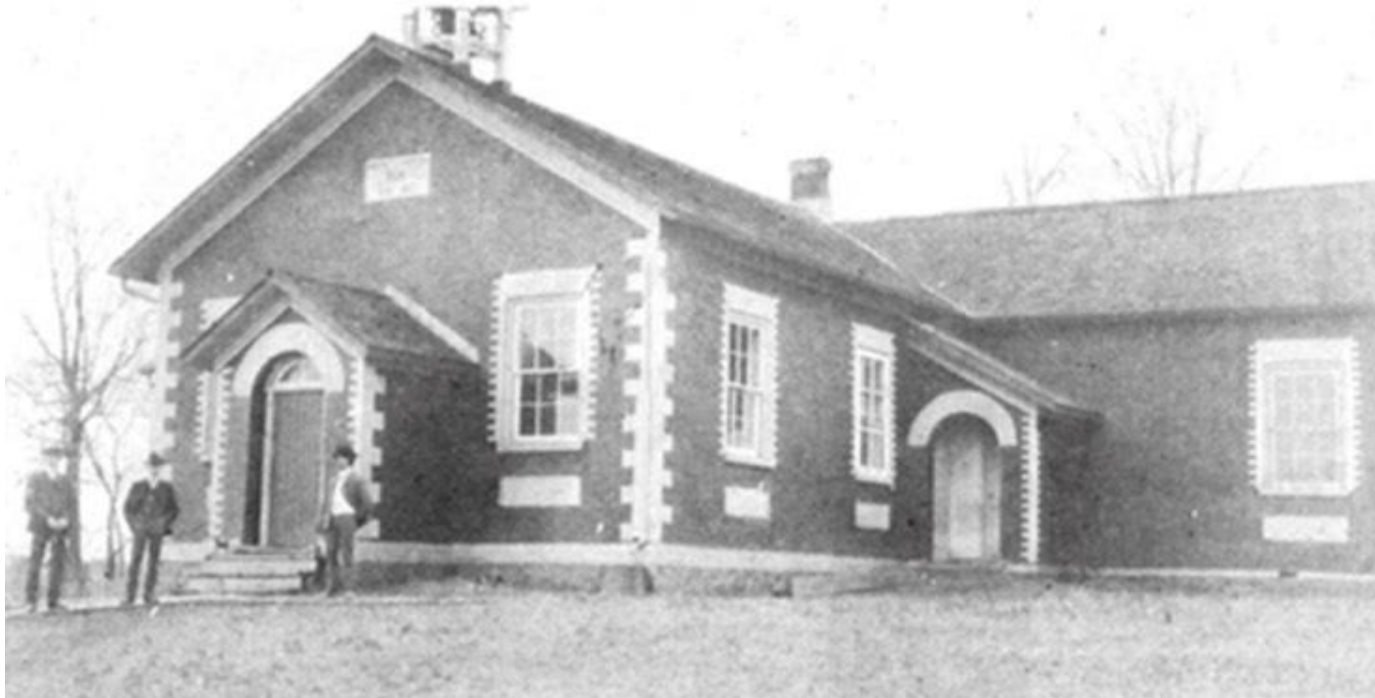
Picture taken 1920

Little Britain 1844-1972 So many students were crowded into this section that by 1868 additions were added! a new section (SS #19) was built to relieve further congestion. In 1924 continuation classes were added. A new school in 1928 was designed to look like a castle and was named the "Castle School". This school was replaced in 1972 by the current Mariposa Elementary School.

SS #8 Mariposa
Little Britain

"Castle" School





Picture taken 1900

SS #8 Mariposa

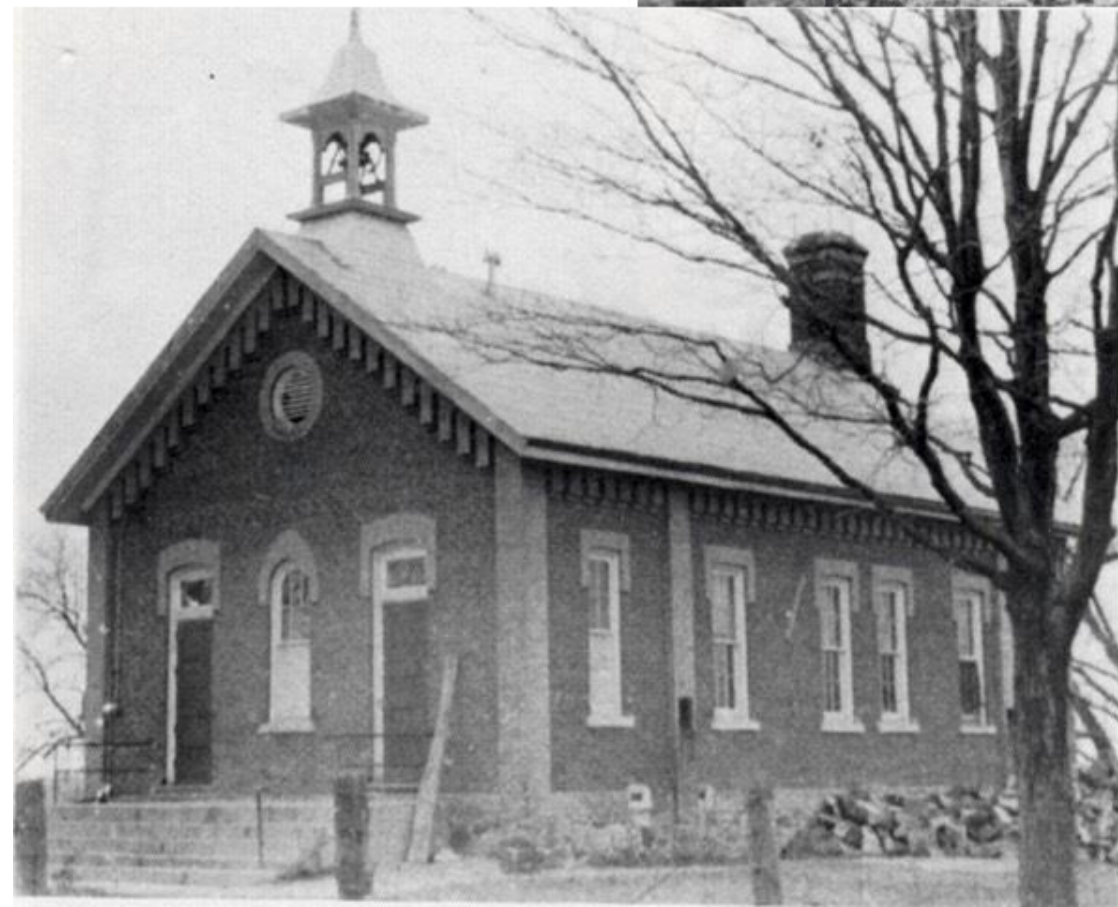
Little Britain

School built 1867



Picture taken 1905

SS #11 Mariposa
Ramsey's



Ramsey's School 1840-1965



SS #12 Mariposa
Oakwood

Oakwood School First school in the 1830s quickly outgrew its capacity several times and by 1857 had two stories with a Grammar (High) school upstairs. It was the first school to surpass 100 students. High School (Continuation) classes were discontinued by 1889 as the school section could not afford to keep them going and students went to Lindsay or Little Britain. This section had at least 5 separate school houses over the years.



SS #12 Mariposa
Oakwood





SS #12 Mariposa
Oakwood



SS #13 Mariposa
Brown's

Brown's School 1850-1972



SS #16 Mariposa
Eden's

Eden's School 1850-1972

Eden's School reunion 1890





SS #14 Mariposa
Valentia

Valentia School 1852-1975 This section was created after the lots of Cartwright Township north of Lake Scugog were added to Mariposa in 1852.



SS #15 Mariposa

Fingerboard

Fingerboard School 1850-1972



SS #17 Mariposa

Providence / Glandine

Providence/Glandine School 1853-1972

Coated in the 1850s to relieve the crowding in SS #6.



SS #18 Mariposa
Port Hoover

Port Hoover School 1853-1872 Another "later" school section created due to overcrowding in south Mariposa. Port Hoover was a "port" on Lake Scugog where grain was shipped out in the early 1840s. As roads and railroads spread, the port was abandoned and became a ghost town.



SS #19 Mariposa
Station School

Mariposa Station School 1855-1972 In 1877 the Beaverton-Lindsay railway line passed between Oakwood and Little Britain. The station to serve both villages was called Mariposa Station. A new brick school was built to serve students in the busy hamlet.



SS #20 Mariposa
Royal Oak

Royal Oak School 1890-1972 A "new" school section to serve a growing student population north of Sonya. It was a union school with Brock Township. Royal Oak School 1890-1972.



SS #21 Mariposa
South Valentia

Class picture circa 1921

South Valentia 1897-1952 Another latecomer meant to replace congestion in Valentia School. It was a union section with south Ops Township.

