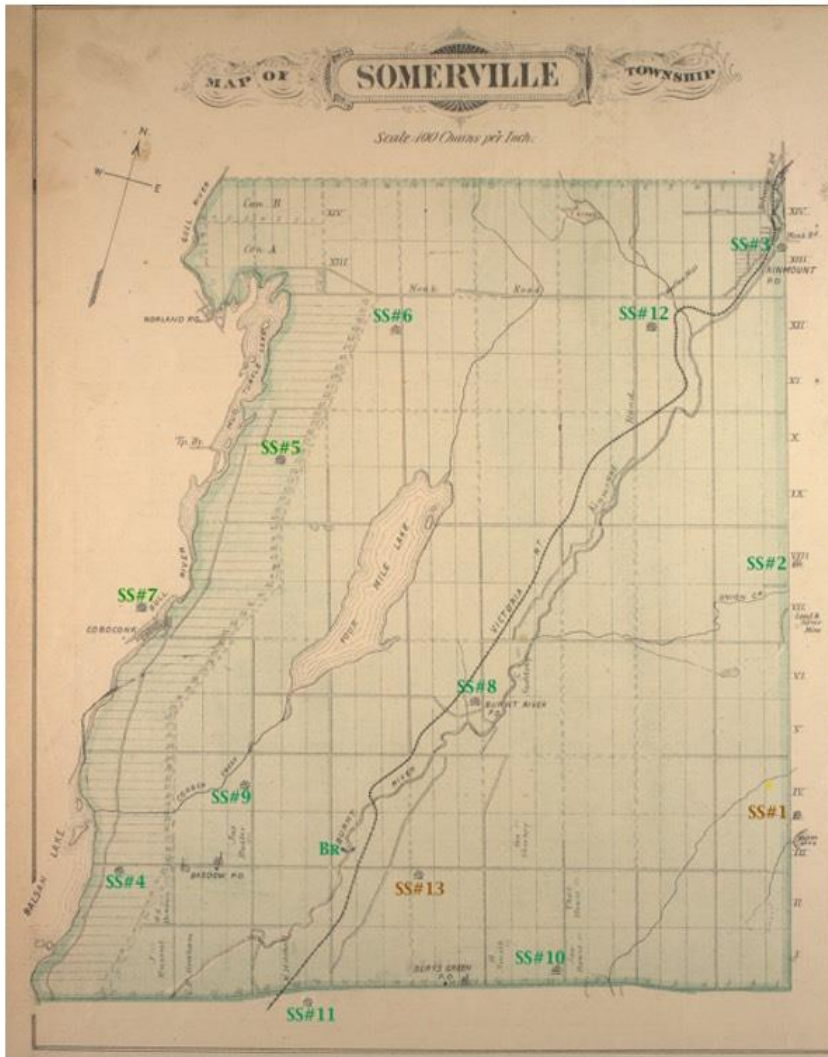


One Room Schools North Victoria

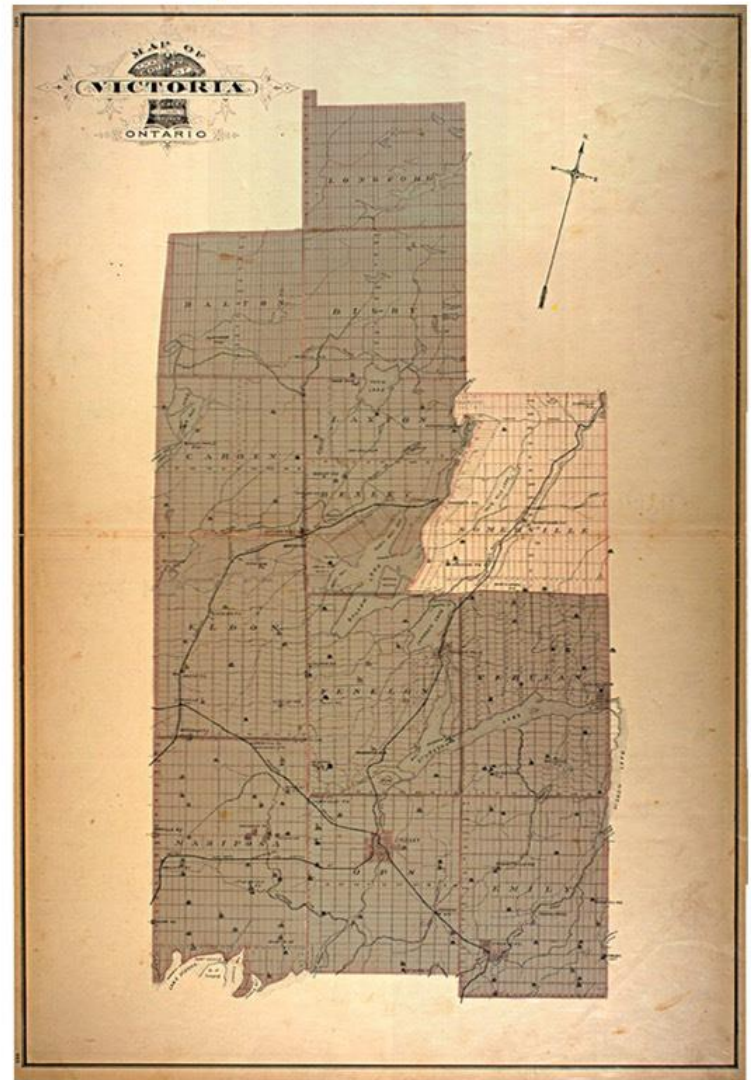
Somerville Twp, Victoria County



Legend

SS#n Somerville school section: photo present

SS#n Somerville school section: no photo



If you have any information about, or photos of, the early schools in this area, please leave your name and contact information at the booth displaying the "Heritage Registration" sign.



SS #2 Somerville, SS #2 Galway
Union Creek

A union school serving students in Somerville and Galway in the area of Union Creek.
A rare winter shot of the school.

SS #3 Somerville
Kinmount

The village had 4 schools, all in different locations! This shot shows a group of students and two teachers outside the original Kinmount School, which was located where the Royal Canadian Legion Branch now stands. We see two male teachers in the photo, one leaning against the fence on the right and a second, centre left, standing in front of the fence. There could be female teachers in the group, but they are not obvious.



The Students and Teachers, Kinmount Public School, 1910. Note the lack of older boys. Most boys over fourteen went to work and did not further their education. It was more fashionable for young girls to attend school beyond this point.



Back row: Irwin Goodhand, Cliff Suggist, Len Wilson, Clayton Buay, Gordon Dearborn, Wilma Watson, Mary Watson
 Front row: Keith Holiday, Murray Wilson, Jim Holiday, Ray Butler, Fern Watson, Bob Holiday, Cecil Watson
 Class picture, 1934

SS #4 Somerville

Baddow



It was situated in the southwest corner of Somerville, the second entry point for settlers into Somerville.



TEACHER - WILLIAM MITCHEL Class Picture 1940
 BACK ROW: FERNE WATSON ALEXANDER, HELEN FELL, MARGUERITE SAWYER, MABEL SAWYER BAKER, MURRAY WILSON, CECIL WATSON, JIM HALLIDAY, DON PHILLIPS, KEITH HALLIDAY
 FRONT ROW: NORVAL WATSON, BOB HALLIDAY, MURRAY HETHERINGTON, FLOSSIE SAWYER, JOAN PHILLIPS, RAY DUNCAN, BOB PHILLIPS, DON HALLIDAY

SS #5 Somerville

White's

It was situated on the east side of Mud Turtle (Shadow) Lake to serve the Rumney Settlement.



SS #6 Somerville

Dongola

"I attended Dongola Public School from grade 1 to grade 7, my older sister Phyllis attended in the 1940's and in the early 1900's my father and his brothers and sisters also attended this school. This picture shows the school on the last day of school in June 1963."

One Room School Presentation

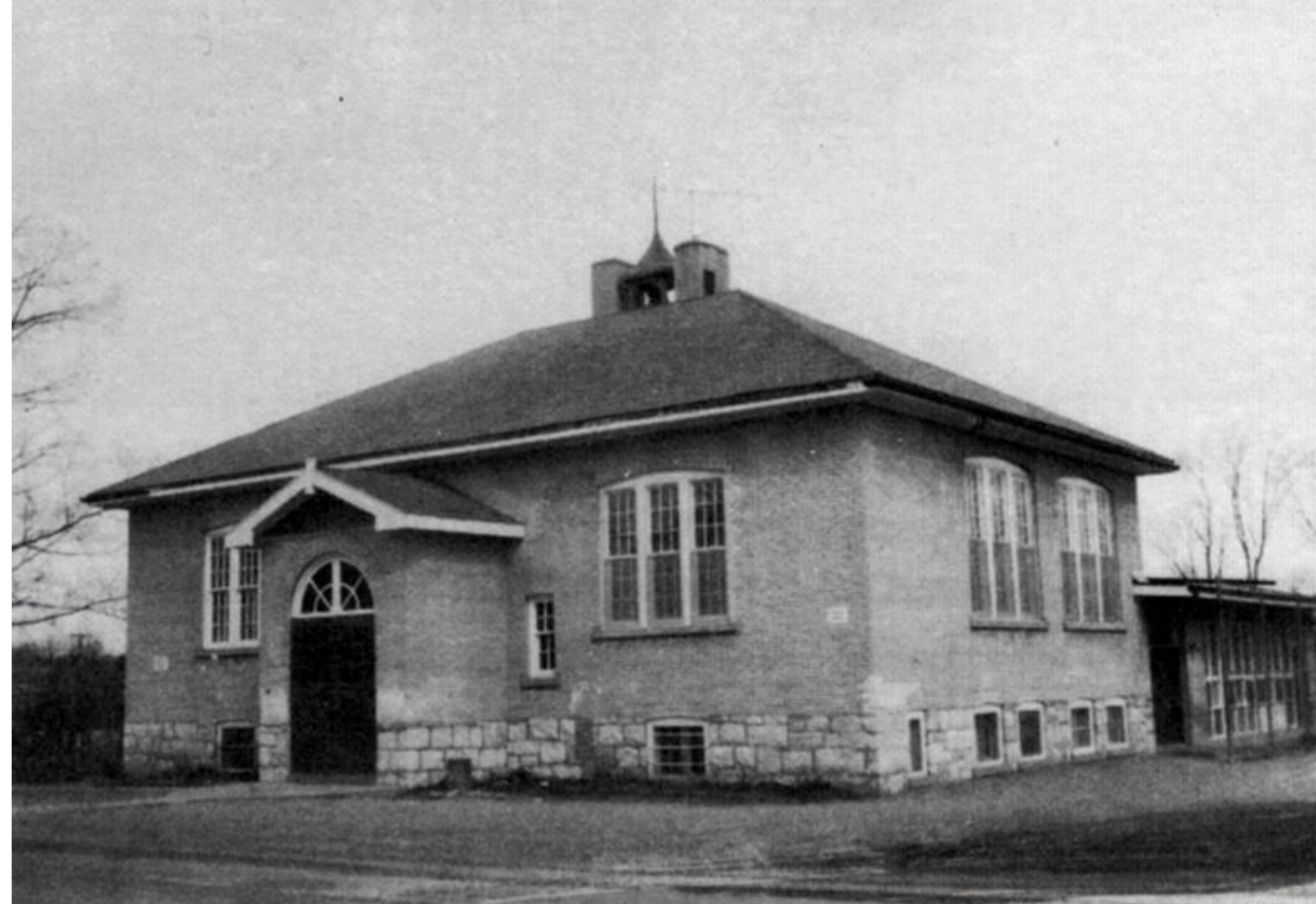


1963

Located at the point where the Baseline Road meets the Monk Road, the community was named after a battle on the Nile River in 1885.



1929



SS #7 Somerville, SS #1 Bexley
Coboconk

**A union section with the school
located in Bexley (Coboconk Village).**

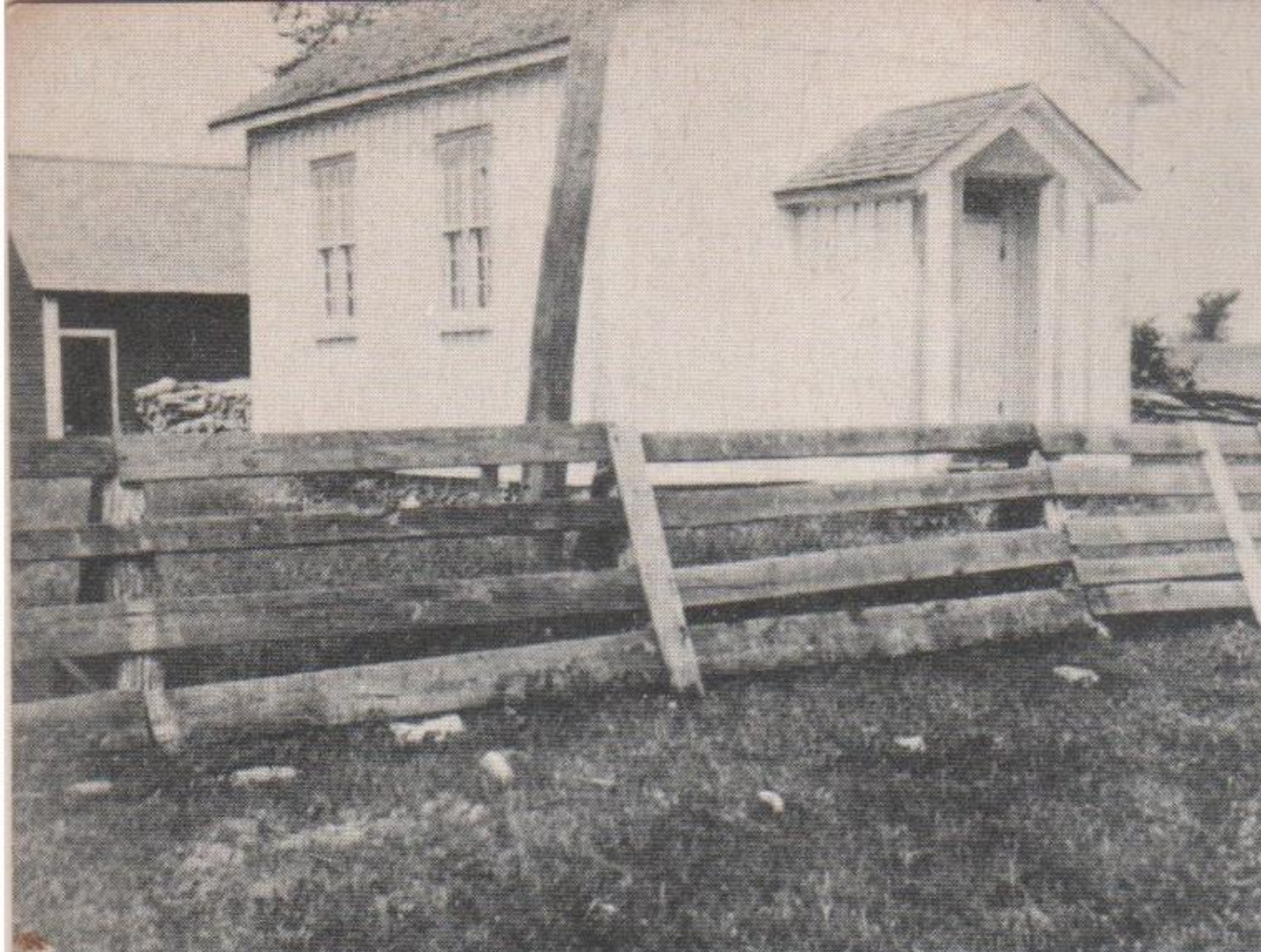




SS #8 Somerville

Burnt River

**This village was created by the arrival of the railway in 1875.
Previously called Rettie's Station.**



SS #9 Somerville

Glendown

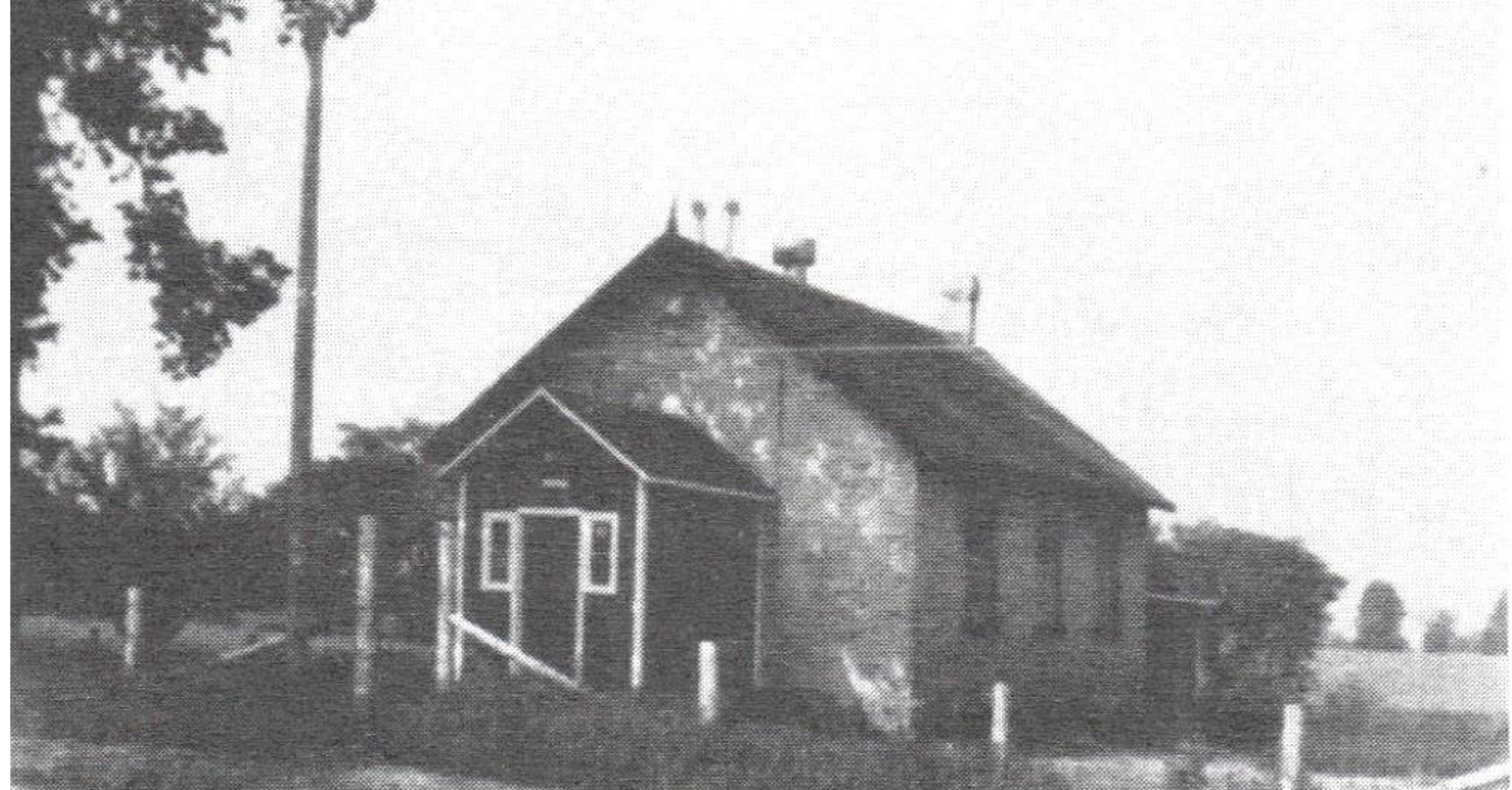
**It was situated between Dongola and Burnt River.
Opened and closed several times as population fluctuated.**



SS #10 Somerville

Burys Green

**Howies School. Located along (east) Bury's Green Road.
it was a union section with Verulam.**



**SS #11 Somerville, SS #12 Fenelon, SS #11 Verulam
Fell's**

**Fell's School. a union section with Somerville,
Verulam and Fenelon. It served students in (west)
Bury's Green and was located near Fell's Station.**



SS #12 Somerville

Morrison's

White or Morrison's School. Located at the corner of the Monck Road and Pinery Road, students came from Watson's Siding and west towards Dongola.

Schools without photos

SS #1: "In the early days of 1860 in the Silver Lake district parents loved their children and longed for them to become thinkers, scholars, statesmen, Christian leaders.

The men were busily engaged in pine timbering, clearing the land, and putting in crops on small, small clearings. But urged on with a higher ambition for their children's future, a number of progressive men met at Silver Lake post office on January 11th 1860. The object of this meeting was to elect three fit and proper persons to act as trustees, so that a school might be built and opened". (*History of Silver Lake School Before 1883 by Maude Boyd*)



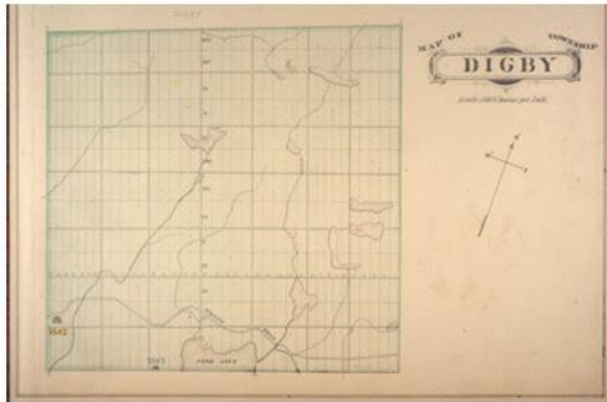
SS #13 Stoney Lonesome School.

The last school section to be formed to fill in the gaps between Burys Green and Burnt River. Stoney Lonesome was the area nickname given for its rocky terrain. The suspension bridge pictured was built across the Burnt River by Lloyd Watson. He lived on the west bank of the Burnt River, but SS #13 was on the east bank. To allow his children access to the nearest school (they could have attended SS # 9), he built this suspended bridge. Now that's dedication (and engineering!). It took a courageous student to walk to school via this route!

Several Somerville students also attended Norland School (SS #1 Laxton).

Br Bridge across the Burnt River built by farmer to provide shorter access to SS #13 for his children.

Bexley, Laxton, Digby & Longford Twps, Victoria County

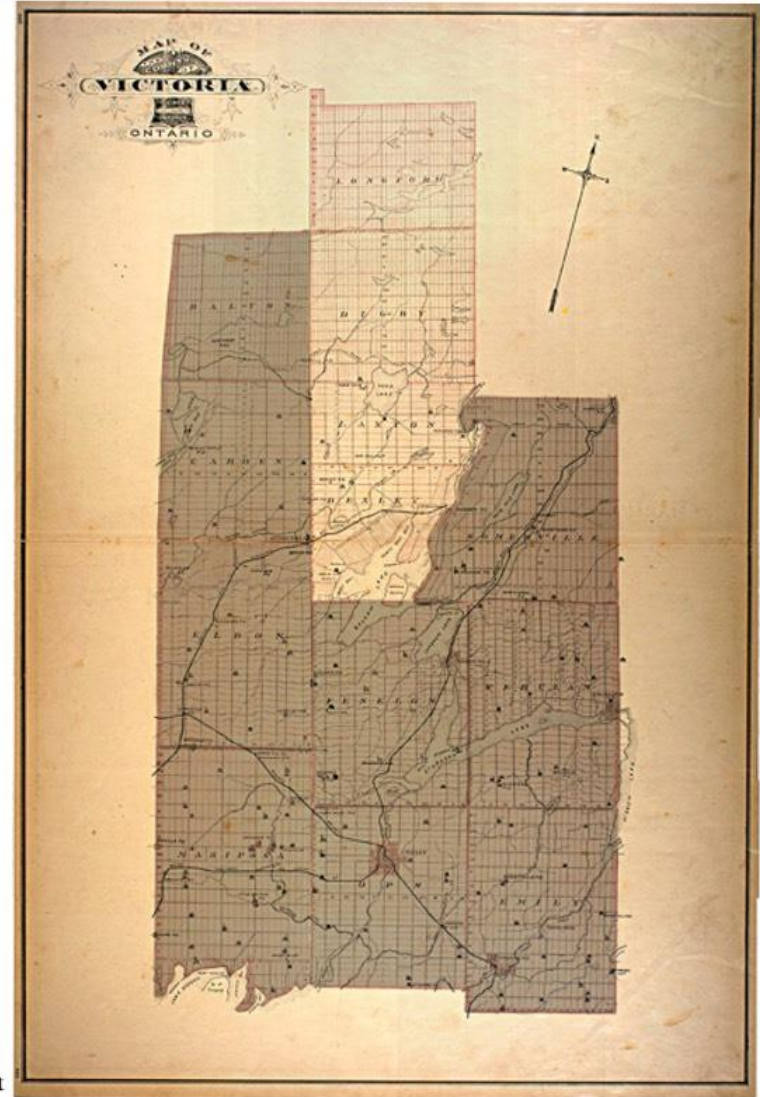


Longford Township never had any permanent settlers and was always privately owned.

Digby Township never was a separate municipality, always being attached to Laxton. The only real settlement was in the southwest corner along the Head River. There were 2 school sections in this area. A third section was planned, but never acted on.



Originally Laxton Township was twinned with Bexley (1860). The school sections for both townships were union sections, with the school houses ranged along the Boundary Road. When the 2 townships separated, the school sections were basically changed.



Legend

- SS#n Digby school section – photo present
- SS#n Laxton school section – photo present
- SS#n Bexley school section – photo present
- SS#n school section – no photo

If you have any information about, or photos of, the early schools in this area, please leave your name and contact information at the booth displaying the "Heritage Registration" sign.



**SS #1 Bexley,
SS #7 Somerville
Coboconk**

Coboconk (1861-present) Originally a union section with Laxton, in 1865 the 2 townships went their separate ways & the school house was moved to Coboconk Village. The school section also included SS #7 Somerville, but the school houses were always on the Bexley side of the village. After the second (frame) school house burnt down in 1908, a 2 room brick school was built (still standing) to serve the students of SS #1 Bexley, SS #7 Somerville and SS #7 Bexley (a section that never had a school house). As the rural, one room schools in Bexley were shut down, the population of the brick school expanded leading to several additions. The Coboconk school had run its course, and in the Great Amalgamation of 1993, it was closed in favour of Ridgewood District School.



SS #2 Bexley

French Settlement

French Settlement School 1864-1940
Several families of French-Canadian lumberjacks settled in central Bexley in the 1860s, hence the French Settlement. After the original log school house had run its life-span, a stone school replaced it. The school was closed in the 1940s & the students shipped to Coboconk.





SS #3 Bexley

Bexley

Bexley School . 1864-1955

The hamlet of Bexley was located in the centre of the township, east of Victoria Road. By 1920, a 2 door, larger frame school house replaced an earlier school. It was closed in the 1950s.





SS #8 Bexley
Corson's Siding

**Back row: Murl Richmond, Elva Decater, Grace Wires, Violet Corson,
 Annie Malally, Viola Richmond, Betty Bell, Iris Scriver,
 George Richmond, Walter Downes**
Middle row: Tom Scriver, Stewart Bell, Harriet Wires, Vera Richmond
Front row: Vernon Corson, Robert Wires, Victor Wires

Corson's Siding School 1862-1940

In the late 1800s, Corson's Siding became a happening community along the railway line between Victoria Road and Coboconk. Numerous settlers working in the lumber industry, and later the Raven Lake Cement plant, lived in the area. As both those industries failed, the population declined and the school eventually closed. Students were transferred to neighbouring Victoria Road and then Coboconk.





SS #9 Bexley
Victoria Road

Back row: Mrs. Alice Sinclair, teacher; Marjorie Forman, Lois Stewart, Diana Lytle, Verona McArthur, Margaret Ballam, Marina Murchison, Marilyn Styles, Bill Forman, Leslie Dufty, Alec Dunbar, Bob Ballam, Mrs. Irene Chirpaugh, teacher
 Middle row: Elsie Murchison, Gwen Dunbar, Leona Dunbar, Gladys Dufty, John McDonald, Ken "Blackie" Matheson, Glen Stewart, Ken Tully, Murray Thompson, Bud Dufty, Don "Reddie" Matheson
 Front row: Billy Dunbar, Isabel Ferguson, Elwood Stewart, Ralph Ballam, Judy McDonald, Betty Forman, Teddy Dufty, Franklin Stewart, Peter Brentnell, Bill Hillis

Class picture 1949-50

Victoria Road 1862-1970

A union school with students from Eldon and Carden also attending. In the 1800s Victoria Road was an important business centre for North Victoria. It had railway and road access. Disputes arose between the 3 townships over school section boundaries and a court mediation was needed to settle the school issue. The school stayed open until about 1970 to serve the region's children. Today, Victoria Road is (almost) on the list of Ghost Towns.





SS #1 Digby

Digby

Digby School (1867-1965). The school house was located on the Monck Road west of Head Lake. The second frame school still stands today. When Head Lake School was closed, the students went to this school. But in 1965, when the last of the one room schools was closed, the students were sent to Norland. One teacher, Ms Sullivan, taught at the school for 32 consecutive years (1929-1961), which was likely a record for one school!



SS #2 Digby, SS #2 Dalton
Uphill

Uphill (1862-1941) This was a union section with Dalton Township. Uphill was on the Victoria Road where it crossed the Monck Road, and the last settlement on the Road before Longford. The area was depopulated by the 1940s, the school closed and Digby students sent to SS #1, then (1965) to Norland.

SS#1 Laxton 1874-1907



Norland. (1860-1992) The original school was on the Boundary Road. By 1865, a new school was built in Norland. The school had at least 3 different buildings. The last (stone) school house was enlarged several times as consolidation and population growth demanded more space. Likewise as the student population declined, the school was closed in 1992. The building became a library et al.

SS #1 Laxton
Norland





SS #1 Laxton Norland 1894 class picture

Left to right from Back Row: 1. Malcom McMillan, 2. John Batty, 3. Wilson Parker, 4. Pearl LeCraw, 5. Millie Parker, 6. Meta Woodcock, 7. Stella Kay, 8. Edith Batty, 9. Herbert Wicks, 10. Charlie Simpson, 11. Lorne Adair, 12. Geo. Courtemanche, 13. Fred Martin, 14. John McMillan,

1. Florence Simpson, 2. Tom Wicks, 3. May Wicks, 4. Bertha Courtemanche, 5. Effie Griffin,

1. Dossie LeCraw, 2. Ethel Adair, 3. Genivieve Houston, 4. Millie Martin, 5. Minnie Russel, 6. May Teel, 7. Clara Routley, 8. Flora Adair, 9. Elsie Woodcock, 10. Ada Routley, 11. Annie Russel, 12. Millie Courtemanche, 13. Millie Bodway, 14. Minnie Jacobs, 15. Amelia Liscombe

1. Pearl Griffin, 2. Artie Martin, 3. Maud Courtemanche, 4. Leonard Gunn, 5. Pearl Routley, 6. Frank Russel, 7. Della Stoner, Teacher: Ida Campbell, 8. Fred Russel, 9. May Stoner, 10. Wilfred Courtemanche, 11. James LeCraw, 12. Willie Kay, 13. Hugh Perkins, 14. Geo. Russel

1. Carr Sylvester, 2. Phila Adair, 3. Dolph Courtemanche, 4. Arthur Adair, 5. Wellington Routley, 6. Ray Houston, 7. Amy Houston, 8. Lulu Adair, 9. Claude Houston, 10. Alfred Courtemanche, 11. Arnold Wakelin, 12. Eddie Griffin

Total – 60 students and 1 Teacher – Ida Campbell



SS #2 Laxton Beech Lake

Beech Lake (1865-1959). This school served the north-east section of the township. On August 28, 1945 the school burned to the ground. The determined parents built a new structure in just 8 days, mostly by volunteer help! (No school time lost here!) The school was closed in 1951 and the remaining students bussed to Norland. But overcrowding at Norland caused Beech Lake to be reopened in 1953. Grades 5-8 were taught here until 1959 when the school was closed permanently.



Back row: Art Hoskin, Lillian Thompson, Stella Newman, Lena Boyce, Mary Parkin, Elmer Newson, Wm. Hoskin, Amos Newson, George Gunn
Second row: Unknown, Bessie Hoskin, Tilly Winterburn, Maude Winterburn, Clara Armstrong (teacher) Katie Cooper, Whitfield Parkin
Third row: Fred Murdock, Mary Hoskin, Laura Dundas, Clara Dundas, Isabelle Dundas, Elsie Hoskin, Mabel Cooper, Gertrude Newman, Eric, Bessie & Mary Thompson
Front row: John Thompson, Violet Boyce, Mabel Boyce, Garnet Thompson, Leroy Parkin, Norman Newman, Ray Greer

1903 Class Picture

SS #2 Laxton Beech Lake

SS #3 Laxton
Head Lake



Fourth (back) row: Betty Davey (Skuce), Muriel Hopkins, teacher Mona Horne, Elma Davey (Corley) and Lucy Davis (Robertson)
Third row: Alma Davis (Liscombe), Audrey Puterbaugh (Adams), Leona (Dolly) Puterbaugh (LeCraw)
Second row: Jean McKee (Batty), Arthurlene Davis (Greer)
Front row: Clifford Puterbaugh, Jim Puterbaugh, Stanley Hopkins

Class picture 1941

Head Lake (1861-1945) The Head Lake school moved several times as population shifts demanded. Several times an arbitrator was called in to settle the disputes. When it closed in 1945 (only 5 students left), the students were sent to SS #1 Digby.

Carden & Dalton Twps, Victoria County

Carden and Dalton Townships seemed to gravitate more towards Rama and Mara Townships in old Ontario County and Orillia in Simcoe County. The earliest settlers came from the west and Lake Simcoe or up the Victoria Colonization Road in the East. It was a long way to the Victoria County seat in Lindsay. Many of the school sections were union sections with what was Ontario County (now Simcoe County). High School students in particular attend Orillia High School.

Dalton school without a photo

SS #5 Ragged Rapids or Steen's School

Ragged Rapids was a ragged lumber community along the banks of the Black River in north-east Dalton. The population was never large, and the school never existed for long. Today the community is entirely abandoned. No photos exist, so far as we know!

Carden schools without a photo

SS #5 O'Neill's School 1870-1911 This school was closed early (1911) before a photo could be taken? Here is a story about the "unusual" duties a teacher sometimes had to perform:

Lou and his father were repairing a ranch fence near the log school one day and noticed that the low windows were open and from time to time, it seemed a shower of particles could be seen coming from within. Wondering what could be the reason, Lou went to the school door and discovered the teacher, Miss Clara Bassett, was gathering up sheep manure from the floor with an old slate. Apparently someone's sheep had found the door loose enough to allow them the shelter there from some of nature's cold winds.

SS #7 Horncastle School 1866-1936 Horncastle was the next settlement north of Victoria Road along the Victoria Colonization Road. Tales of Horncastle and its school can be found in the novel "The Lark In The Clear Air" by Dennis Patrick Sears. Not many local communities are the settings for novels! Schools days at Horncastle are also well documented by the Carden-Dalton Historical Society. It closed in 1936 due to lack of students.

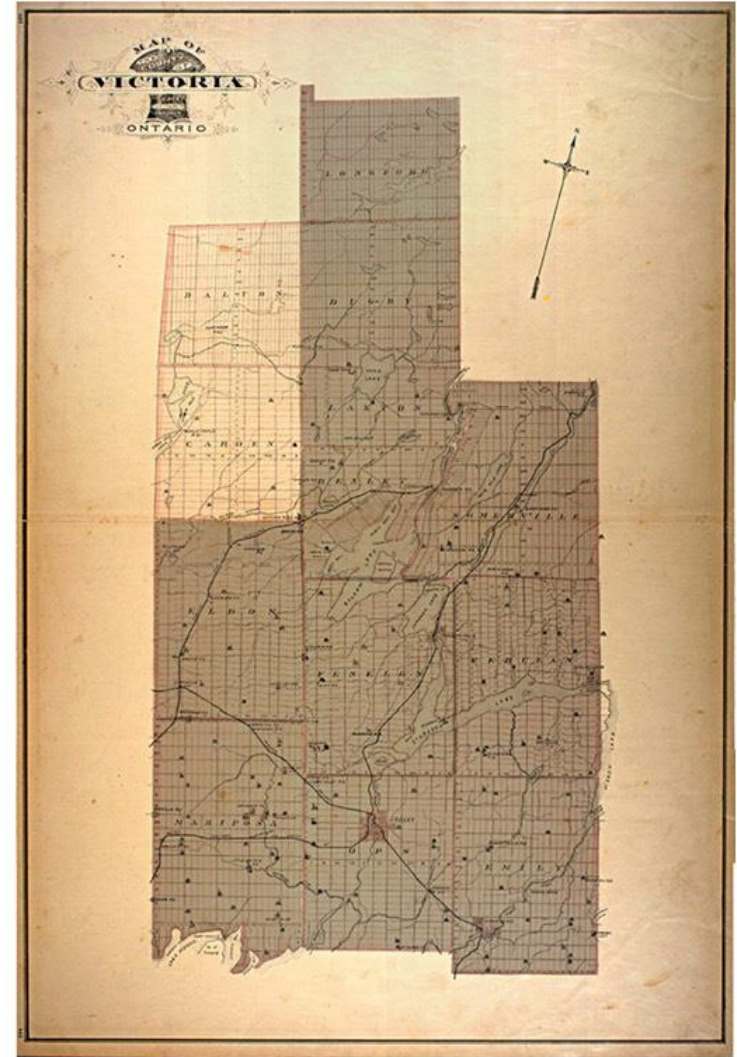
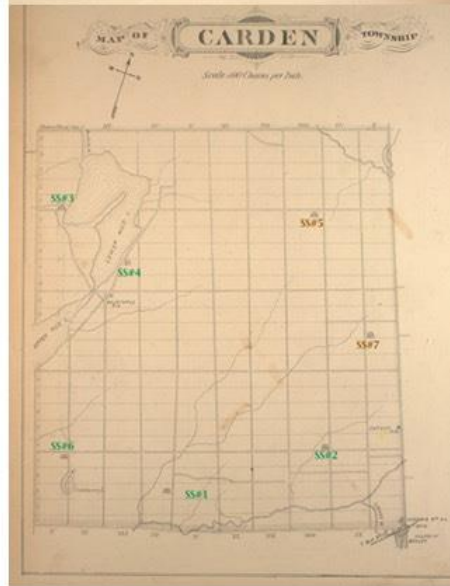
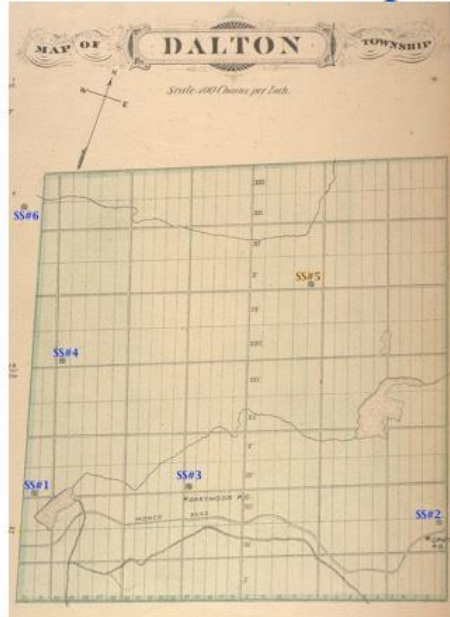
Some Carden students in the north part of the township attended Uphill School (SS #2 Dalton).

Legend

SS#1 Carden - photo present

SS#1 Dalton - photo present

SS#5 no photo



If you have any information about, or photos of, the early schools in this area, please leave your name and contact information at the booth displaying the "Heritage Registration" sign.

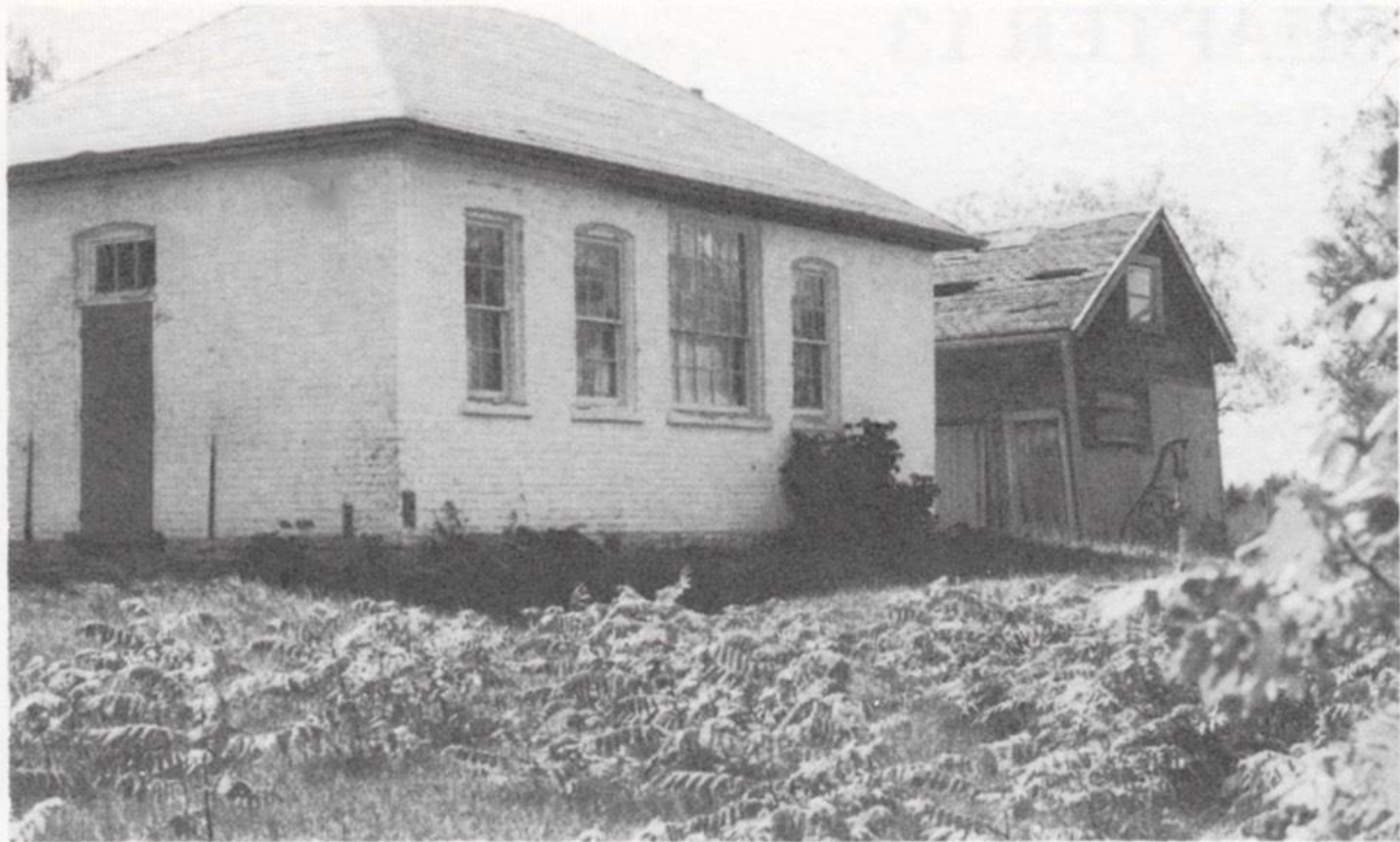


SS #1 Carden

Whalen's

Whalen's School (Rohallion) 1861-1947

Early settlers trickled into Rohallion just north of Canal Lake in Eldon Township. Low attendance closed this school in 1947.

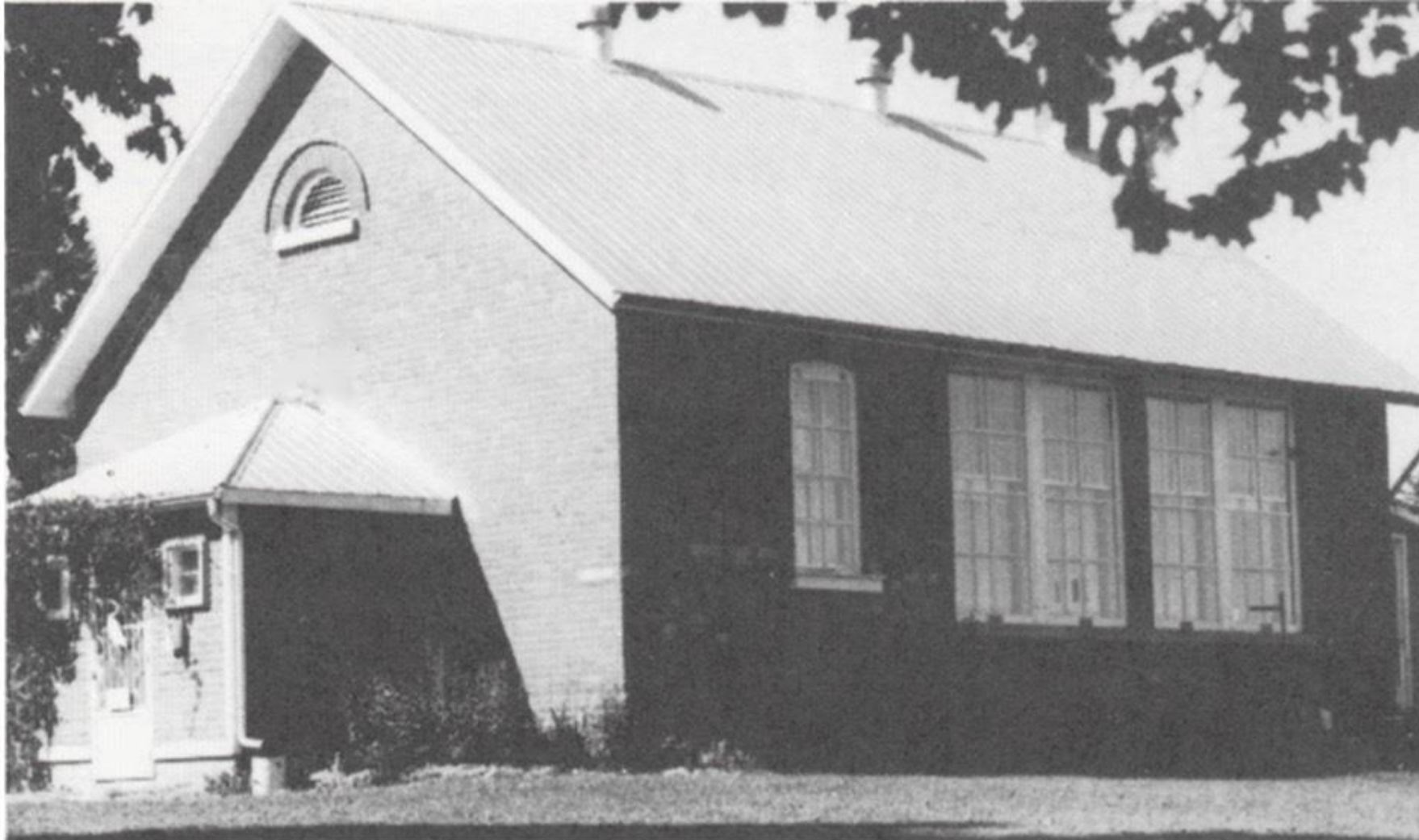


SS #2 Carden

Red Brick

Red Brick School 1862-1967

Originally it was red bricks, later painted white. This school offered Roman Catholic religious instruction, and in 1951 was designated a Separate School.



SS #3 Carden

Mud Lake

Mud Lake School 1865-1967 One of the outstanding physical features in Carden Township is Mud Lake or Lake Daylrymple which cuts through the west section of the township. SS #3 was built on the west side of this long lake and was a union section with parts of Mara Township. Like most Carden Schools it was closed in the Amalgamation of 1967.



SS #4 Carden

Dalrymple

Daylrmple School 1865-1967

It was located just across the Lake from SS #3, but on the east side. In 1948 this school was closed and the students shipped to the other shore (by bus we hope!) to attend the better-built brick Mud Lake School. The journey was unsatisfactory and in 1950 the school was reopened. This classic "posed" photo shows the students dressed in their Sunday-best; although shoes still seem to be optional! Note the fire "service" ladder to the chimney. Chimney fires claimed many school houses over the years.



SS #6 Carden

Sylvan Glen

Sylvan Glen School 1864-1967 Situated in the southwest corner of Carden, it was also a union school with Mara Township. The original log school house was destroyed by fire in 1887. The section ratepayers decided to fire-proof the new building and created a solid fieldstone school as a second structure. It took 3 years to complete, but it sure looks sturdy! No information is available on what the students did in the 3 year span.

SS #7 Carden Horncastle Memories

One outstanding teacher in my memory was Miss Annie Walsh (from Red Brick School Area). Who made sure that we understood what she taught. Her course laid a foundation in grammar and mathematics which have stayed with me all through my student and teaching years.

The deep gratitude of three pupils in the Senior Fourth class of 1914 went to our teacher, Miss Helen Feeney. When she came we had had a succession of teachers, as many as four in a year and we were very much behind in our work. She kept up all the regular work and took us for classes before 9 a.m. and after 4 p.m. She also went with us to school on Saturdays and covered all the subjects necessary for our high school entrance exams. We didn't pass with honours but passed well enough that we were all successful students at Lindsay Collegiate Institute.

Memories of Mrs. Verna McKague (ex-pupil and teacher)

One morning, a Monday, as we three (Willis Jacob, my sister Lillian and myself) sauntered to school we were talking the blues about having to go to school. I said I wished the school would burn down (not really meaning it). As we got within sight of the school, we saw what appeared to be smoke coming from behind the woodshed. We rushed to the spot as fast as we could and found flames pouring from a portion of the woodshed and board partition.

Already there was a hole about 4 ft. in diameter burned out of the boards. We ran for a pail and carried water from the pump about 75 yards away. After many trips to the pump we succeeded in putting out the fire.

When the teacher arrived we told her what had happened. She was very pleased and the trustees thanked us for such a great deed to the community. What they never did know was that a few moments before our good deed, we were all wishing the school would burn down.

Days Remembered By Lorne Holder



SS #1 Dalton

Sebright

Sebright The earliest settlers trickled in along the Monck Road from Orilla to Sebright on the border. A union school with Rama Township was set up on the Rama side of the line.



SS #2 Dalton, SS #2 Digby

Uphill

Uphill (1862-1941) A union school with Digby Township, this school was located where the Monck Military Road crossed the Victoria Colonization Road. The Victoria Road led to Longford Township (which was always uninhabited) and was the scene of a major lumber industry for many years. Most of the residents in Uphill worked for the Longford Lumber Company which had a big depot in Uphill.



SS #3 Dalton

Dartmoor

Dartmoor School 1860s - 1967

The Dartmoor School was the largest school in Dalton Township. Dartmoor was located along the Monck Road between Uphill and Sebright. The log school house was a superb example of an elaborate log school house as seen in this photo. But even it was replaced in 1909 by a brick school still standing!



SS #4 Dalton

Sadowa

Picture taken in 1880s



SS #4 Dalton

Sadowa

Sadowa is located north of Sebright close to the Rama Township border. The community contained a school and a church, both long gone. It was never a prosperous or numerous community.



SS #4 Dalton
Sadowa

Cooper's Falls or Brooks School 1905 -?

A union School with Rama, this section served the students in the Northwest corner along the Black River. Cooper's Falls still exists, but barely.



SS #6 Dalton

Cooper's Falls

