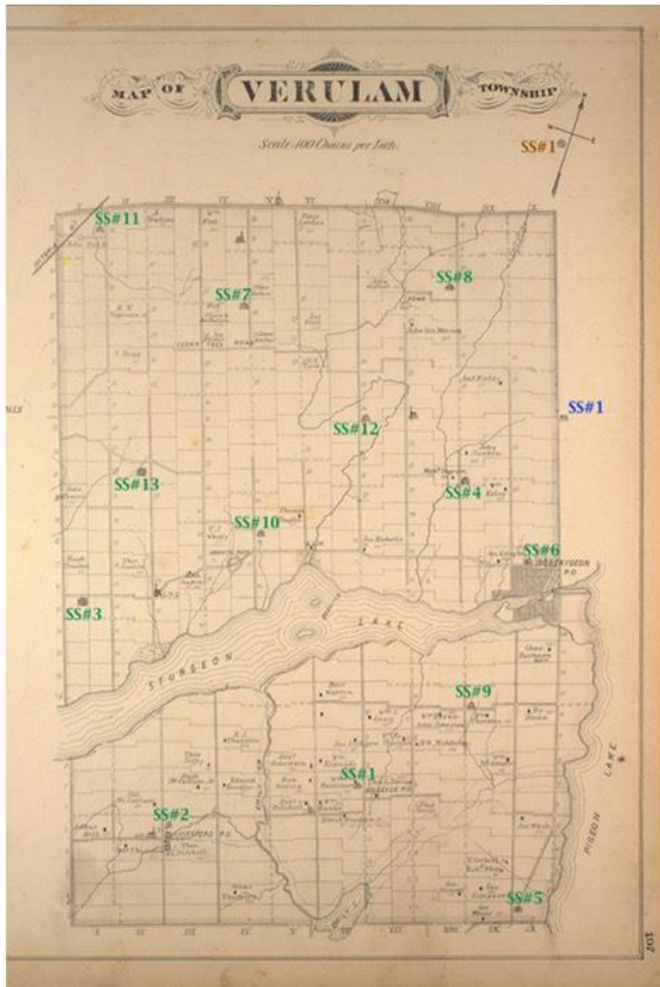


One Room Schools Central Victoria

Verulam Twp, Victoria County



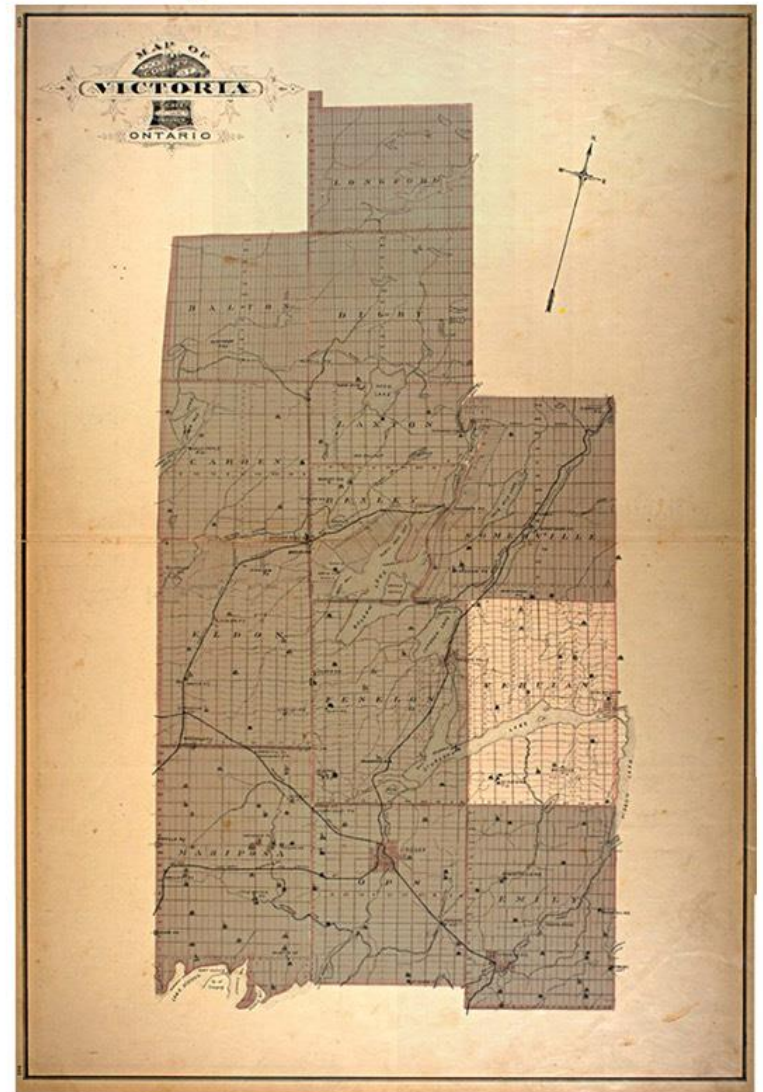
Legend

SS#n Verulam school section: photo present

SS#n Harvey school section

SS#n Somerville school section

A few Verulam students along the Bobcaygeon Road did attend SS #1 Harvey (Bobcaygeon Road) and SS #1 Somerville (Silver Lake).



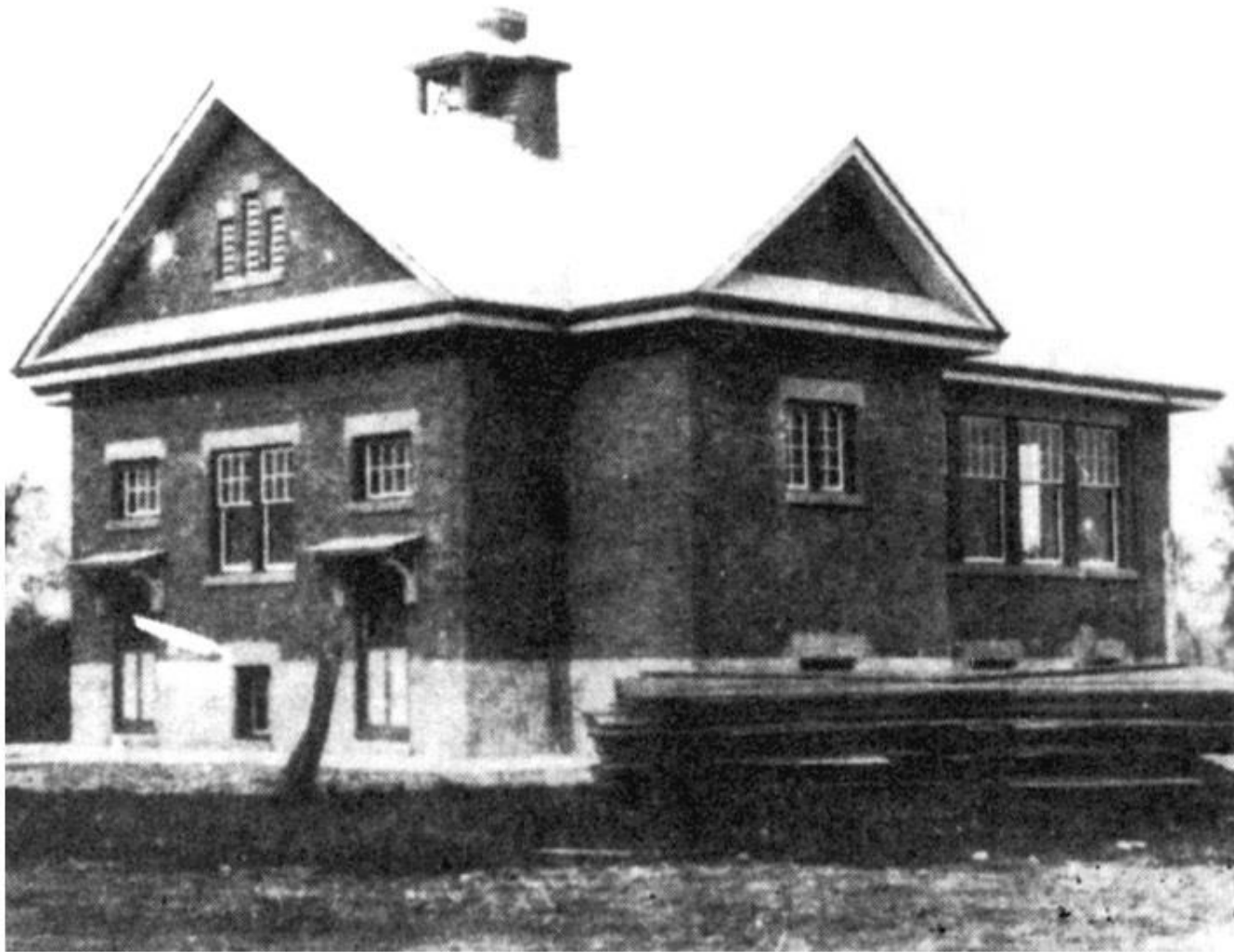
If you have any information about, or photos of, the early schools in this area, please leave your name and contact information at the booth displaying the "Heritage Registration" sign.

SS #1 Verulam

Scotch Line

Scotch Line School 1854-1969 Also called the Military Line School after a group of retired British soldiers who settled in the area.





SS #2 Verulam

Dunsford

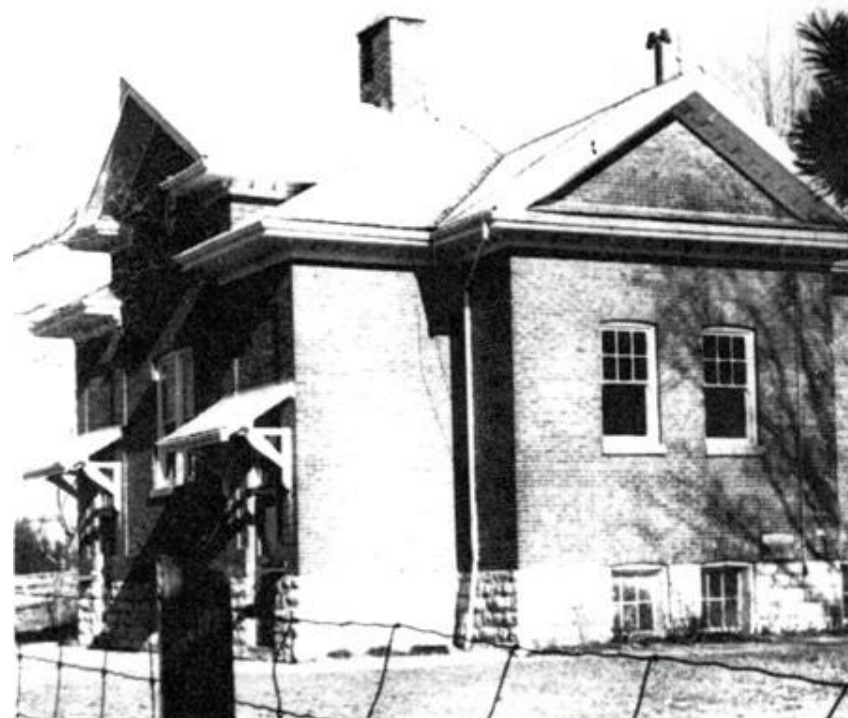
Dunsford 1861- Present. Dunsford served as a centre for all the area of South Verulam (south of Pigeon Lake). When the consolidations of the 1960s arrived, a regional school was built in Dunsford to replace the 4 school sections in this area. Dunsford School still operates today.



SS #3 Verulam
Blythe

Blythe School 1840s-1969. It was founded by the famous artist/writer Anne Langton who lived at Blythe Farm on Sturgeon Lake. It was a union school with Fenelon Township.

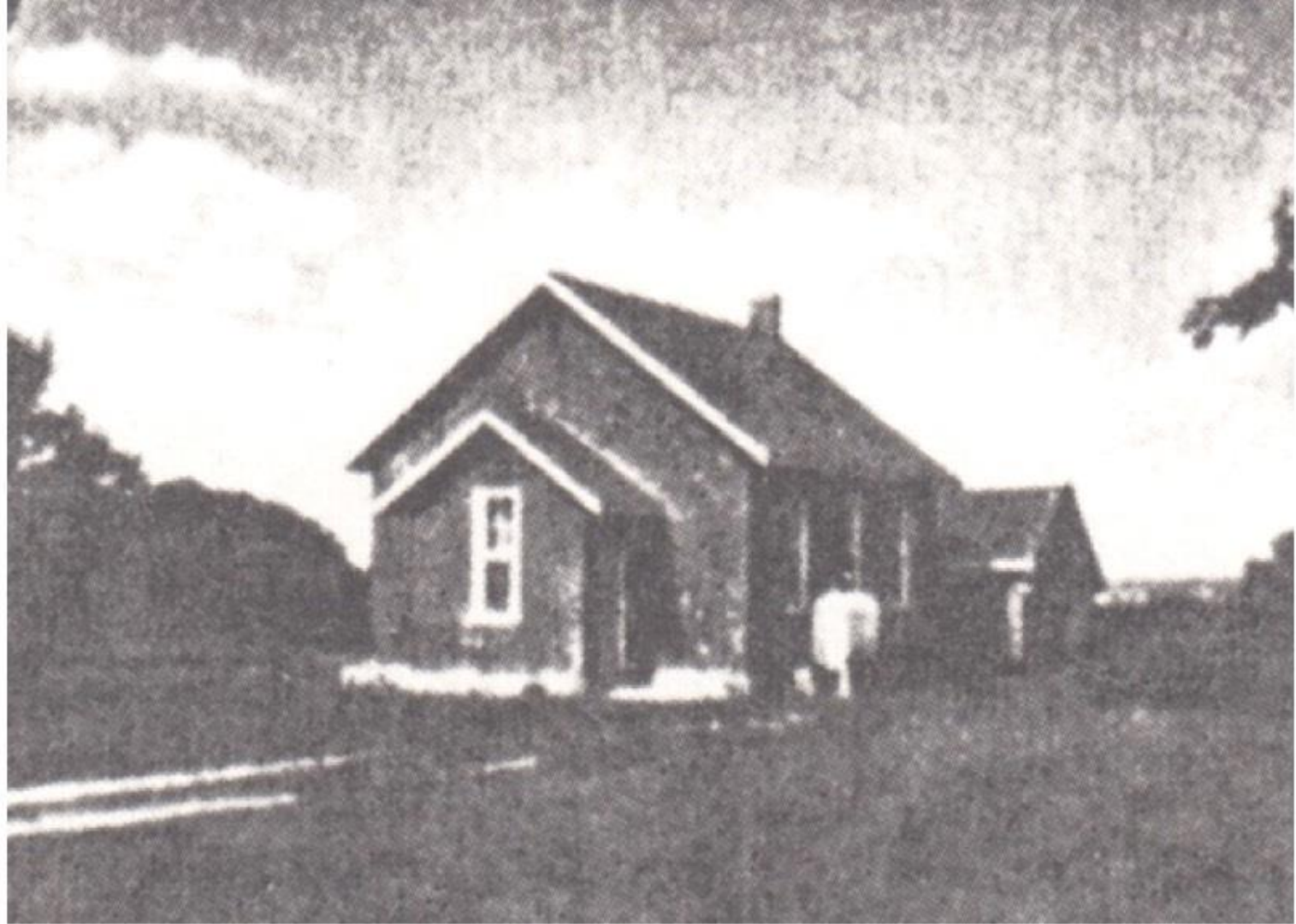




Ingram's School 1840s - 1969. When the last (brick) school house was opened in 1912, it contained one classroom, 2 cloak rooms (boys & girls), an office for the teacher and a full basement! The epitomy of luxury for a one room school house!

SS #4 Verulam
Ingrams

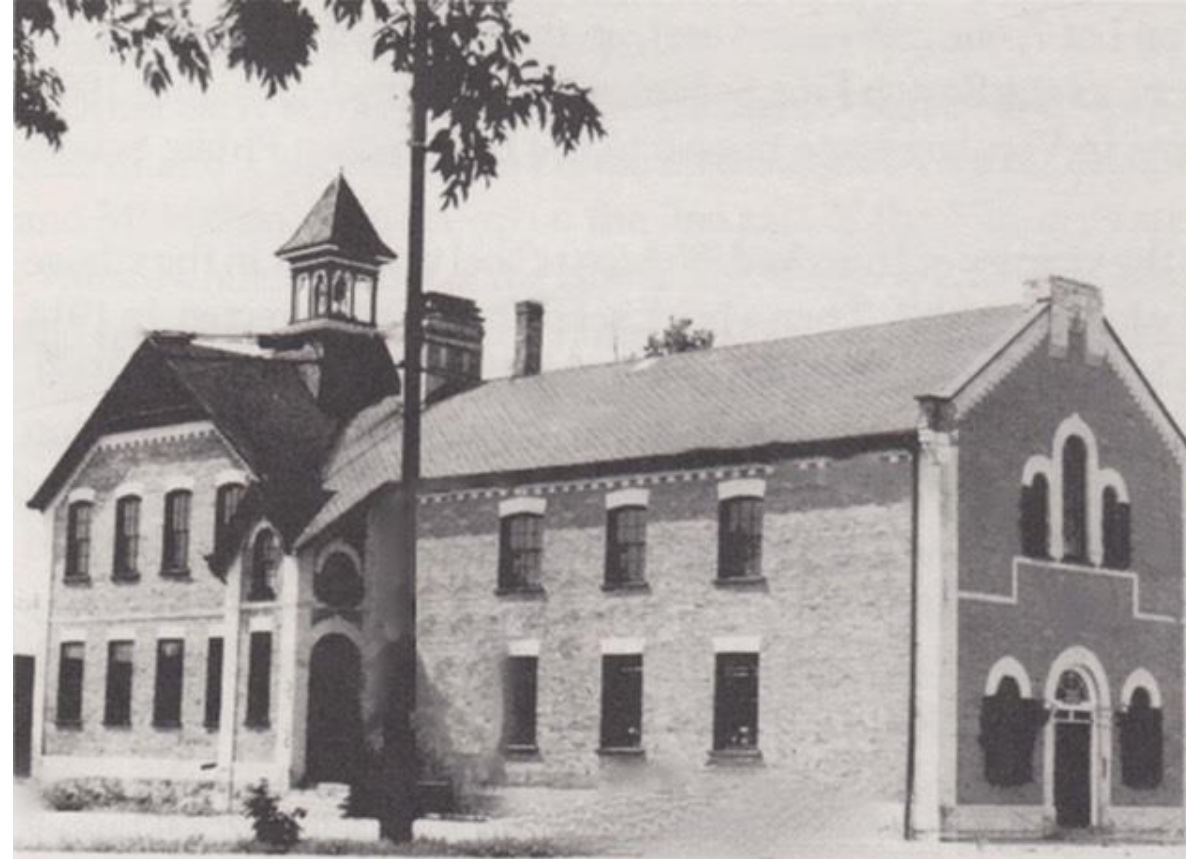




SS #5 Verulam

Quigley's

Quigley's School 1854-1950. "Irregular" enrollment plagued this school which was closed before the consolidations of 1969.



SS #6 Verulam
Rokeby / Bobcaygeon

← King Street school

Second Rokeby school



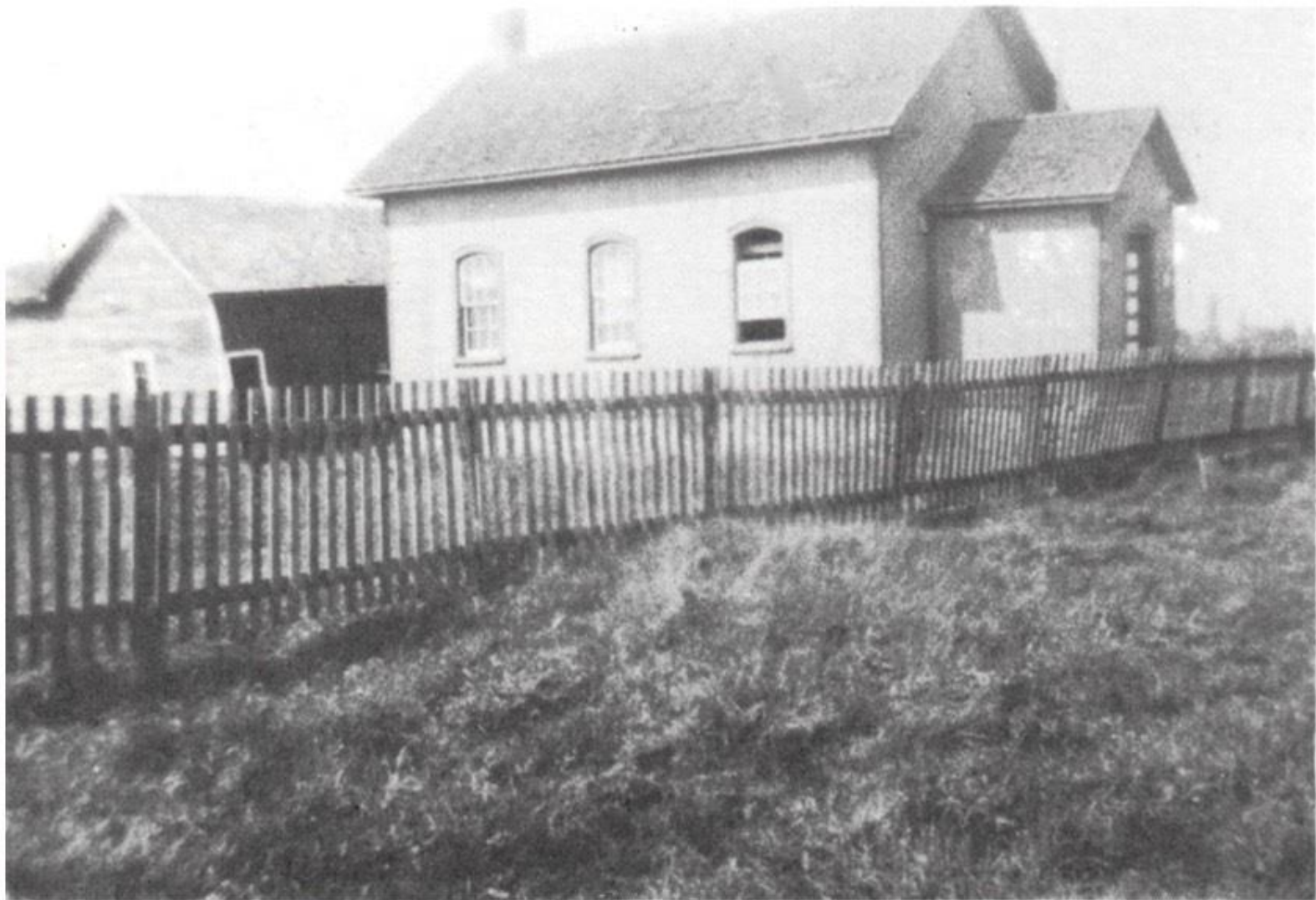
Rokeby School 1840s - 1929. The original Bobcaygeon Village site was laid out on the north shore and called Rokeby. The community had 2 one room schools for many years: Rokeby and one on the islands (Bobcaygeon). Both were listed under SS #6. The Rokeby School's first incarnation was a "lean-to shed attached to a tavern". In 1873, 2 brick school houses were opened: the modest Rokeby one and a huge 2 storey model on King St for Bobcaygeon. An addition to the latter in 1889 increased its capacity to 4 class rooms! The Rokeby school operated until 1929 when the Bobcaygeon Schools were amalgamated, with elementary students going to King St location and secondary students to Hillcroft Continuation School, just acquired. A new Bobcaygeon Elementary School was built in 1956.



SS #7 Verulam

Lambs

Lamb's School 1865-1969. The last, brick school contained a rather unique recessed entry way.



SS #8 Verulam

Devitt's

Devitt's School 1863-1959 When it closed, the 2 remaining students were taken to the nearest school: SS #1 Harvey Township.



SS #9 Verulam

Red School

Red School. 1866 - 1969. Originally built to alleviate overcrowding in neighbouring sections, it was supposed to be a log school. But log was passé even by 1865, and a frame building substituted before the log one was finished! The next version (brick) was opened in 1901.



SS #10 Verulam

Red Rock

Red Rock School 1869-1969. Named after the famous landform Red Rock north of Sturgeon Lake.



**SS #11 Verulam,
SS #12 Fenelon,
SS #11 Somerville
Fell's**

**Fell's School 1871-1964.
Organized to serve a corner of 3
townships (Verulam, Fenelon &
Somerville) near Fell's Station
on the Victoria Railway line.**

**SS #13 Verulam
Hetherington**

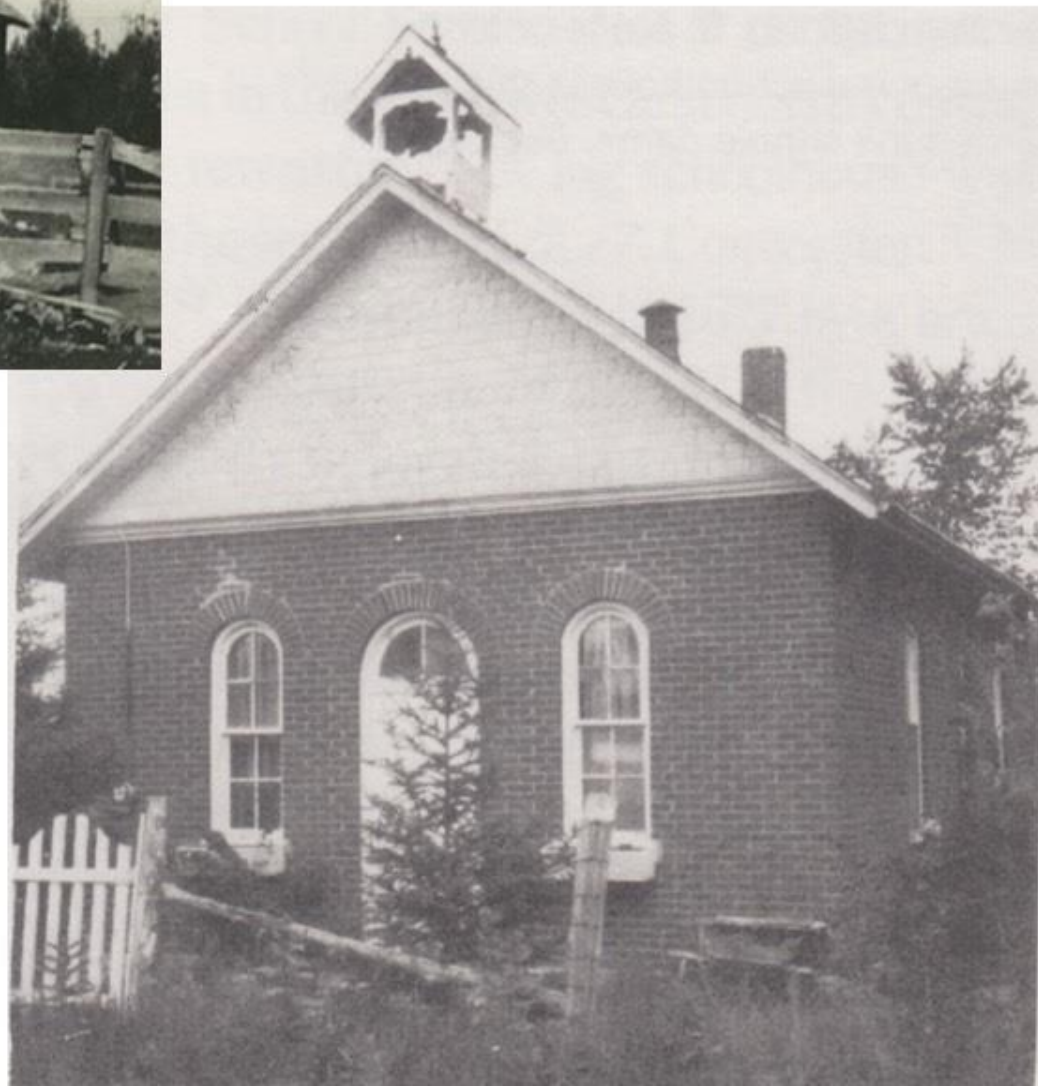
**Hetherington School 1907-1960. A late
addition to the schools of North
Verulam, it's first and only school house
was brick. No wooden ancestors here!**



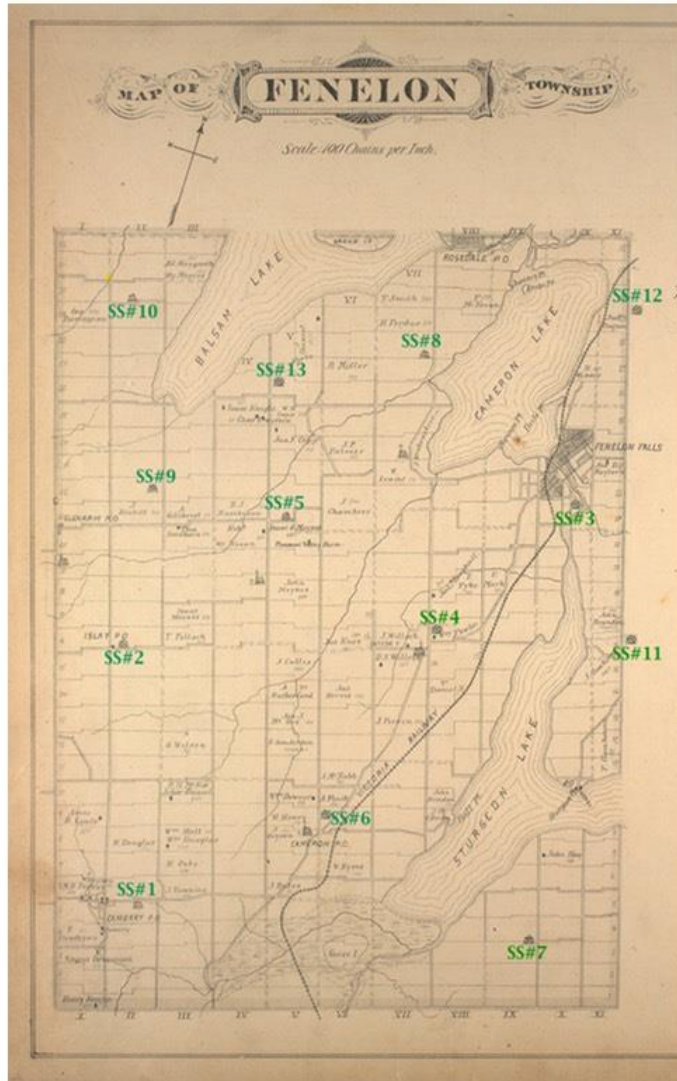


SS #12 Verulam
Fairbairn

Fairbairn School 1872-1960. Located in the heart of North Verulam to serve a spread of settlers inland from Sturgeon Lake.

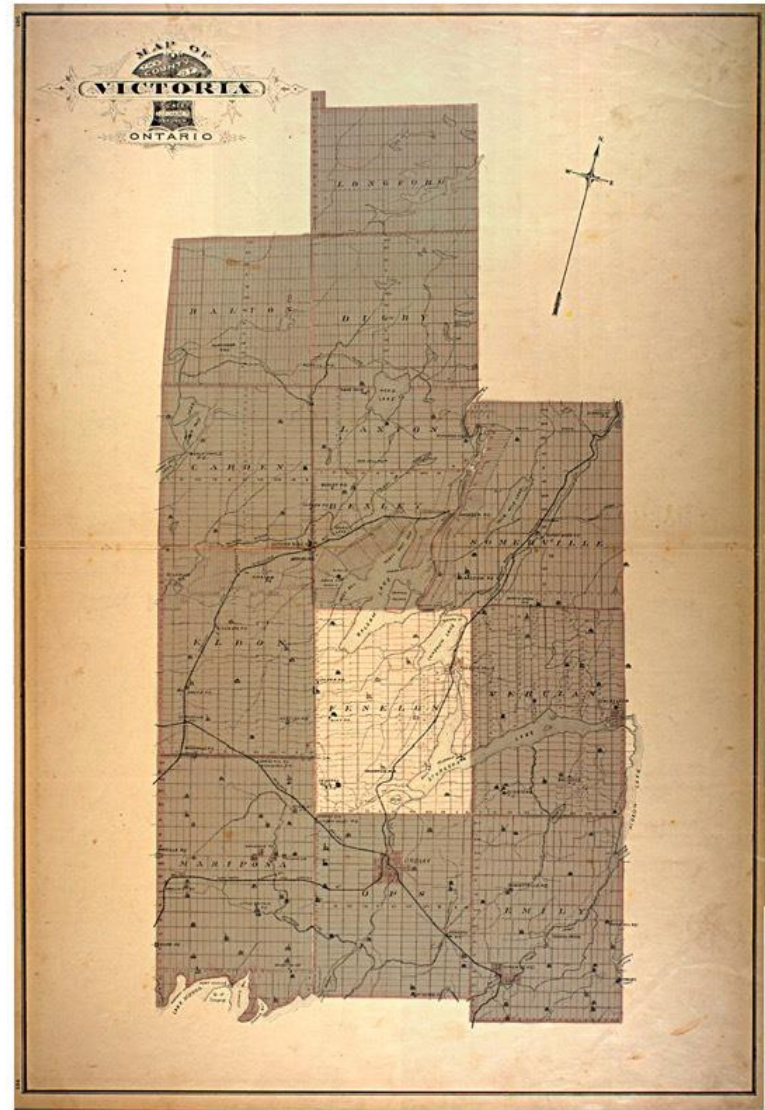


Fenelon Twp, Victoria County



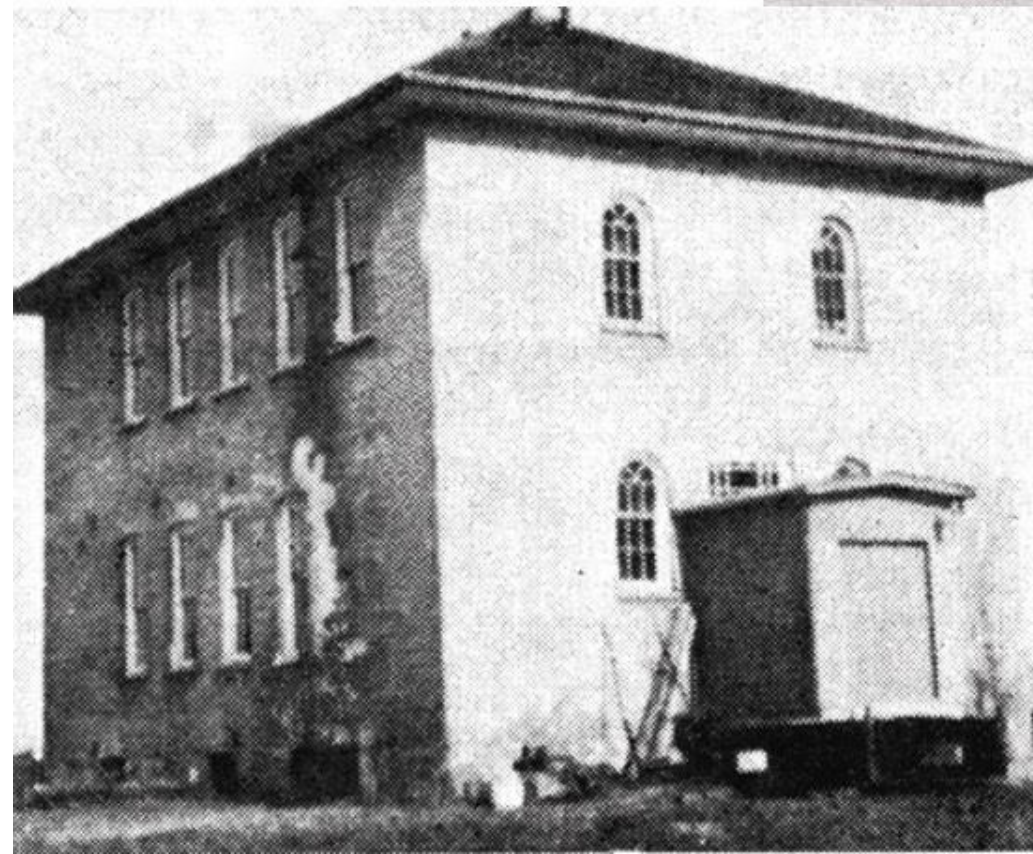
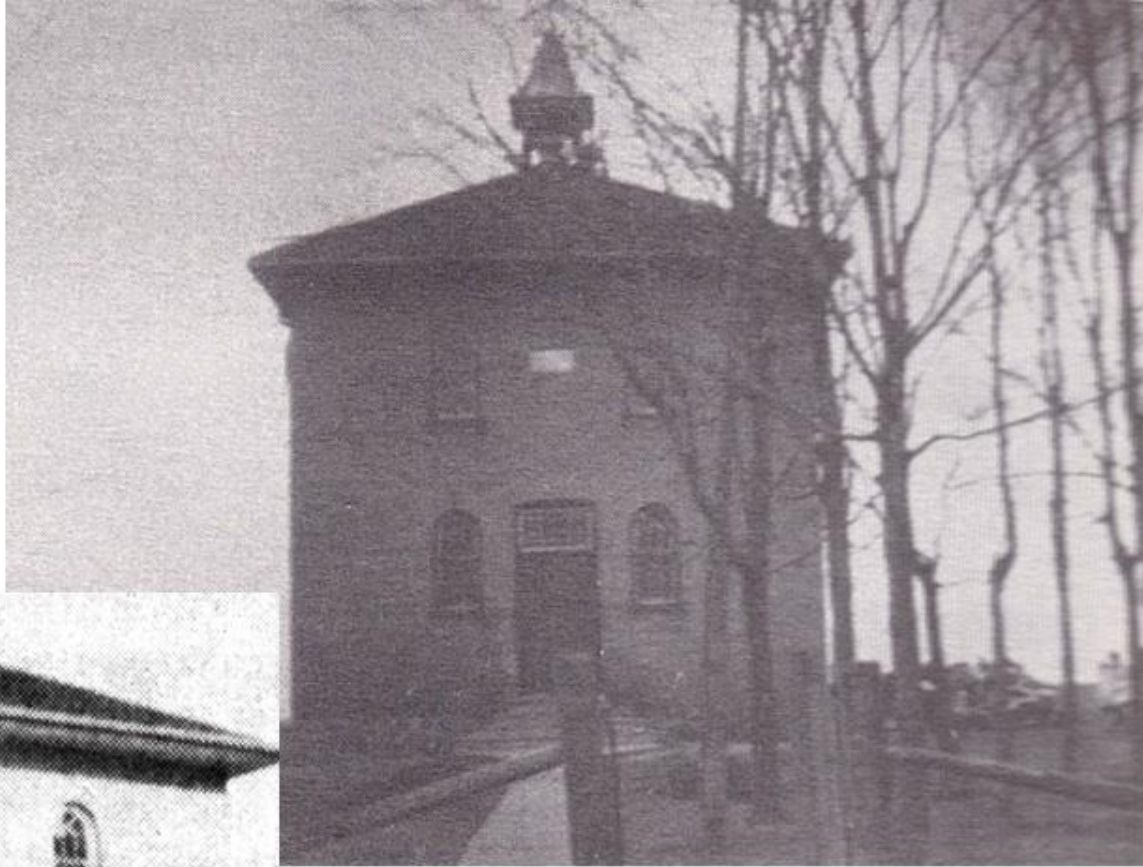
Legend

SS#n Fenelon school section: photo present



If you have any information about, or photos of, the early schools in this area, please leave your name and contact information at the booth displaying the "Heritage Registration" sign.

SS #1 Fenelon
Cambray



Cambray School 1848-1967

As the population in Cambray grew, SS #1 had 4 schools built for the student population. In 1848 it was one room log, replaced by a frame school in 1860 followed by a 2 room brick school in 1871 and finally a 2 storey brick school in 1904. After 1967, students were bussed to Cameron Consolidated School.

SS #2 Fenelon
Islay



Islay 1856-1967

The farm settlement called Islay (after a Scottish Isle of the same name) had a school as early as 1856. Since there was no actual hamlet, the school and the church were all the public buildings.



Back (Ninth) Row: Eric McKay, Tom Quigg, Harry Patterson, Jack Jewell, Carl English, Bud Jewell, Jim Armstrong, Ken Junkin, Bill McFarland, Bruce Brokenshire, Len Wilson, Al Hetherington, Fred Lodge, unknown, Orville Barry
 Eighth Row: Archie Jaccett, Max Aldous, Walter Junkin, Vernon Martin, Selwyn Davies, Elmer Lee, Ian McKay, Joe Suggitt, Milburn Kelly, AlNorthey, Andy Brandon, George Mitchell, Bill Heard, Art Webster, Charlie Hetherington, Doug Welsh.
 Seventh Row: Melville Junkin, Jim Curtis, Doug Hetherington, Carl Kelly, Harold Griffin, Austin Purdy, unknown, Gerald Merrian, unknown, Jack Daniel, Graham Curtis, Orville Jaccett, Howard Northey, Fred Deyman, Jim Jenkinson, Hatfield Johnston.
 Sixth Row: Ralph Littleton, unknown, unknown, Fred Brandon, unknown, Doug Warren, Jack Graham, George Calder, unknown, unknown, Jack Barry, unknown, Sid Lodge, Ken Barry, George Donaldson, Horatio Nelson, unknown, Clarence Fountain, Otto McKendry, Crawford Fountain.
 Fifth Row: Clara Tiers, Margaret Jackson, Irene Daniel, Marg Gould, Marion Walsh, Nora Jaccett, Florence Curtis, Everett Jeffrey, Cecil Deyman, unknown, Percy Pentland, unknown, Orville Donaldson, Bill Welsh, Doug Armstrong, unknown, Lloyd Bulmer, Garnet Smith, Ken Menzies, Jack Lansfield, unknown, unknown, Bert Gaynor, Grattan Donaldson, Art Tipling, Helen Curtis, Mary Deyman, Myra Johnston, Marie Coulter, Mildred Northey.
 Fourth Row: Clara Brokenshire, Maude Gray, Emma Purdy, Helena Burgoyne, Eva Bulmer, unknown, unknown Griffin, Annie Harrison, Olwyn David, Isobel Kelly, Della Smitheram, Annie Menzies, Gertrude Moffat, Phyllis McDermott, Alex McKay, Flossie Curtis, Bertha Lodge, Aulia Johnston, Grace Donaldson, Gert Smitheram, Laura Aldous, Mary Kennedy, Vera Weeks, Alberta McDermott, Catherine Simmons, Dorothy Welsh, Cathie Smitheram, JackJordan, Hartle Nugent.
 Third Row: Larry Lawrence, Miss Adams, Miss Smale, Orlee Eyers, Lavada Mason, Vesta English, Martha York, Marg Edwards, Mary Warren, CathyNelson, Mary Lamb, Rotha Johnston, Annie Henderson, Blanche Trudel, Ruth Townley, Jessie McKay, Lenore Calder, Melina Trudel, Minnie Menzies, Dorothy Gray, unknown, Flora Moffat, Iona Junkin, Olive Day, Henrietta York, Miss Davidson, Miss Green, Miss Fennel.
 Second Row: Susie Magee, Annie Jaccett, Olive Jaccett, Viola Donaldson, Hazel Tipling, unknown Donaldson, Sarah Henderson, unknown, Norma Junkin, unknown, unknown, unknown, May Nugent, Evelyn Havery, Helen McFarland, Mary Thurston, Muriel Brokenshire, unknown, Beatrice Ellery, unknown, Olga Chambers, unknown, unknown, Della Northey, unknown, Annie Keast.
 Front Row: Ila Aldous, Dorothy Stack, Jean Nugent, unknown, Margaret Henderson, Gert Deyman, unknown, Leona Nugent, Lorine Menzies, unknown, Greta Ellery, Shirley Arnold, Maxine Arnold, Wilma Jones, unknown, unknown, Alma English, unknown, unknown, Mary Jenkinson, Art Pogue.

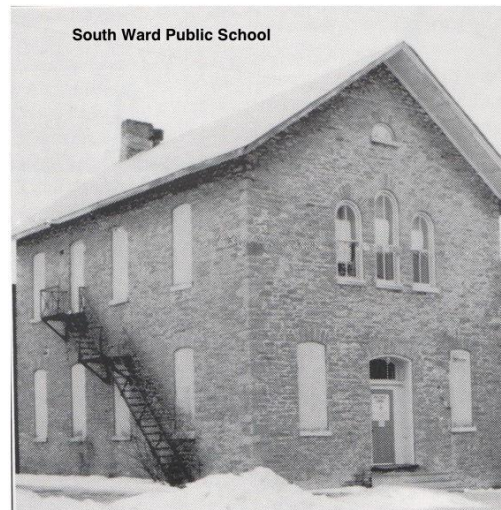
Students from North Ward Public School and Fenelon Falls Continuation School. May 1924

SS #3 Fenelon

Fenelon Falls

Fenelon Falls 1855- present

With its famous waterfall, Fenelon Falls was destined to be a large centre in the township. As the population expanded, a 2 room brick school was built north of the canal in 1868. It added an addition in 1876 to give it 4 rooms! Still it was not big enough and in 1885 a 2 story stone school was built south of the Falls with stone blasted out for a new canal & locks. Both buildings are still standing! In 1898 Continuation classes were started in the South Ward School; the first high school classes outside of Lindsay. After 1912, the population of Fenelon Falls began to decline and all the elementary students were moved to the North Ward School, leaving the South Ward School as continuation only. High school began to attract more and more students in the 1920s, and in 1932 Fenelon Falls established its credentials as a local education centre by building the first wing of Fenelon Falls Secondary School beside the old Stone School. The South Ward Stone School was sold to the Freemasons, the new high school expanded several times and the North Ward School was decommissioned when the new Fenelon Falls Public School was built in the 1960s. Today Fenelon Falls is served by Langton Public School.





Powles Corners 1856-1967

Established in 1856, a new brick school was built in 1878, but was soon so overcrowded, a second room was added. In 1895, as a cost cutting measure, the trustees tried to cut back to one teacher. The parents raised an outcry, and a second teacher was hired! This section had many ups and downs with student populations until the school was closed in 1967.

SS #4 Fenelon Powles Corners



SS #5 Fenelon

Zion

Zion School 1855-1967

Situated on the Glenarm Road west of Fenelon Falls, this school had 4 structures. Two log schools were replaced by a brick structure in the 1870s. The current school house was built in 1900 and is currently a private home.



SS #7 Fenelon

Pleasant Point

Pleasant Point or Hays School ?????-1967

Geography and the first surveyor created a pocket of Fenelon Township isolated from the rest of the township south of Sturgeon Lake. This area was closer to Lindsay or Bobcaygeon than Fenelon Falls. The SS#7 school was also closed in the amalgamation of 1967.





SS #6 Fenelon

Cameron

Cameron 1856-present

The first log school was replaced by a brick school (still standing) in 1870. In 1967, the new Cameron consolidated school was built, but so great was the student population, the old brick school was kept going until 1973 when it was replaced by portables! Cameron School offered continuation classes from 1921-1946.

SS #8 Fenelon

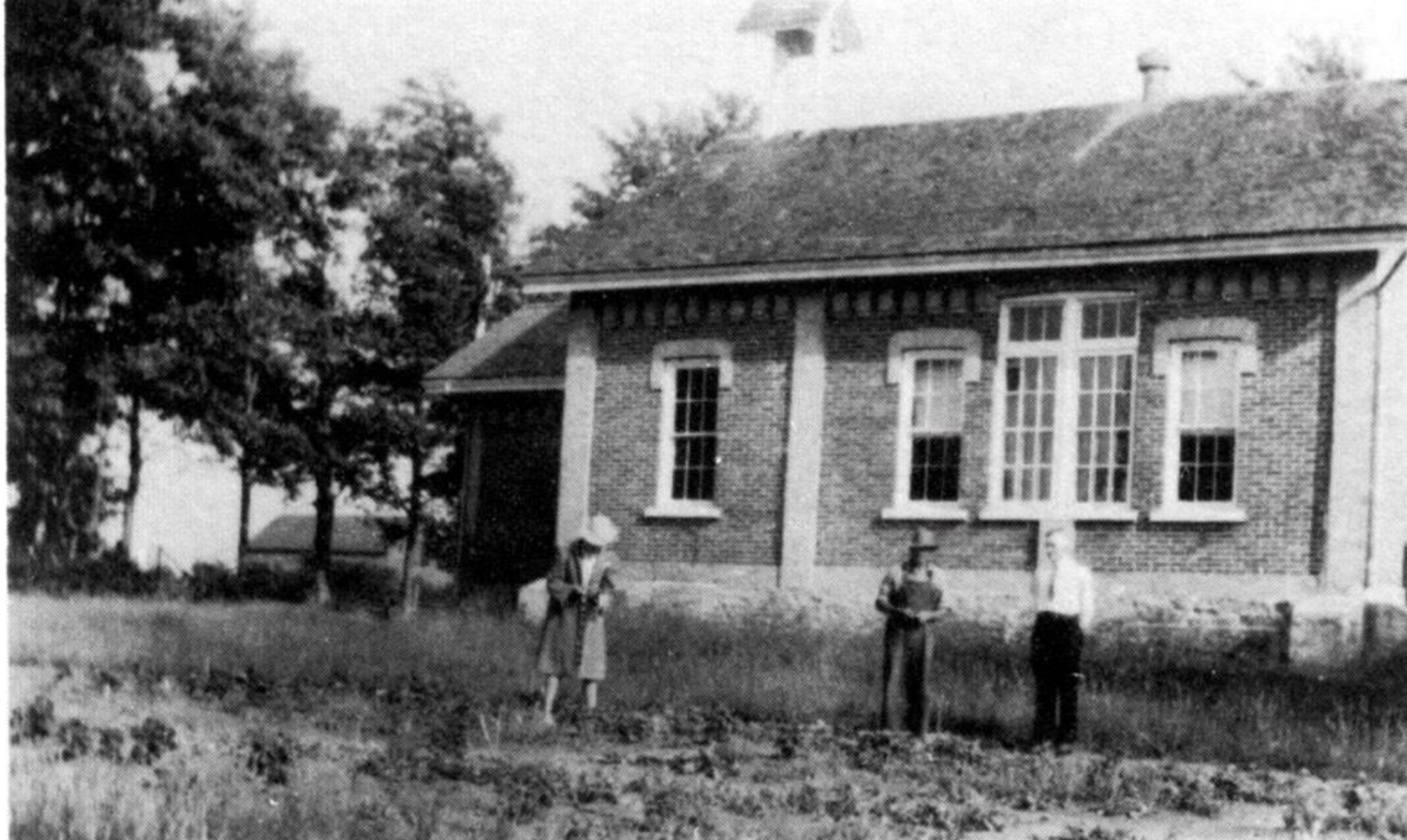
Cameron Point

Cameron Point School 1850s - 1967
This school served an isolated area between Cameron Lake and Balsam Lake in the north-central corner of the township. It was sometimes called Issac's School and it also included the Fenelon side of Rosedale. It still stands along Highway #35.

Back row: Paul Arkwright, Betty Henderson, Mary Baker,
Miss Sedgwick, Shirley Brokenshire, Randy bell
Middle row: Maitland McCue, Janice McCue, Nan Beall,
Rasalie Brokenshire, Vivian Baker, Jacquelyn Oliver,
Nathaniel Selby
Front Row: Bill Northmore, Reg Baker, Gary Applegath,
Don Selby

May 1950





SS #9 Fenelon

Glenarm

Glenarm School 1865-1965

The community of Glenarm straddles the Fenelon-Eldon township line. You might think this would a perfect setting for a union school, but it never was. Fenelon residents attended SS #9 while on the Eldon side they went to the Palestine school.

Long Point School 1867-1967

Even more isolated was the Long Point School. Situated in the extreme northwest corner of Fenelon Township, it also attracted students from Eldon and Bexley townships. It was surrounded by water (Balsam Lake) and swamp with limited access.



SS #10 Fenelon
Long Point



SS #12 Fenelon, SS #11 Somerville, SS #11 Verulam

Fell's

Fell's School 1870s-1967

Another union section with Verulam and Somerville it was located near Fell's (railway) Station in the northeast section of the township.

SS #11 Fenelon, SS #3 Verulam

Blythe

Blythe School 1860s - 1967

Founded by the famous Anne Langton, this school served students along the Verulam boundary and from Sturgeon Point. It was swept away by the consolidations of the 1960s.



SS #13 Fenelon

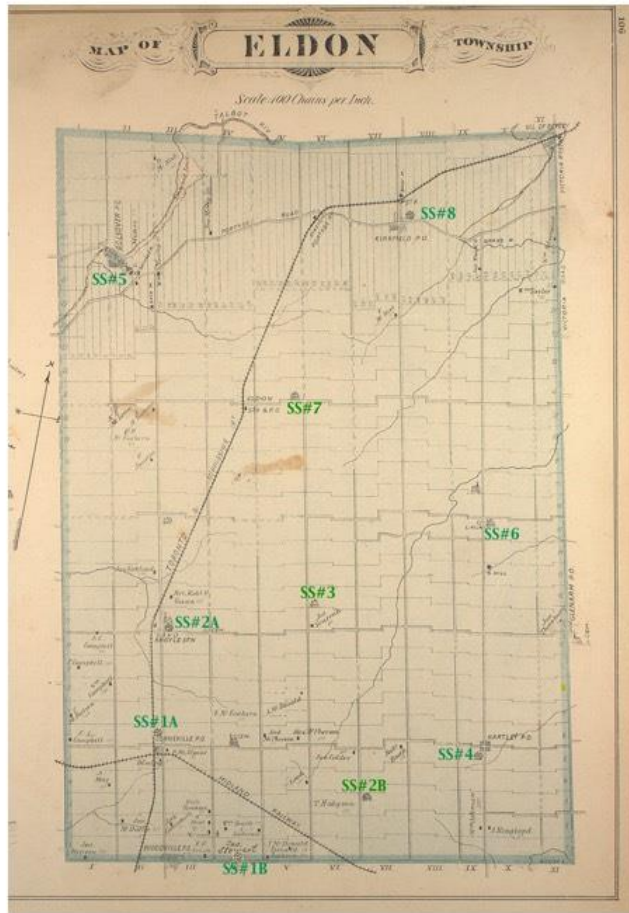
Balsam Grove

Balsam Grove School 1896-1967

The last school section in Fenelon Township filled a gap along the south shore of Balsam Lake in the north centre of the township. There were never many school children in the area, but due to its isolation from other schools it survived until consolidation in 1967.

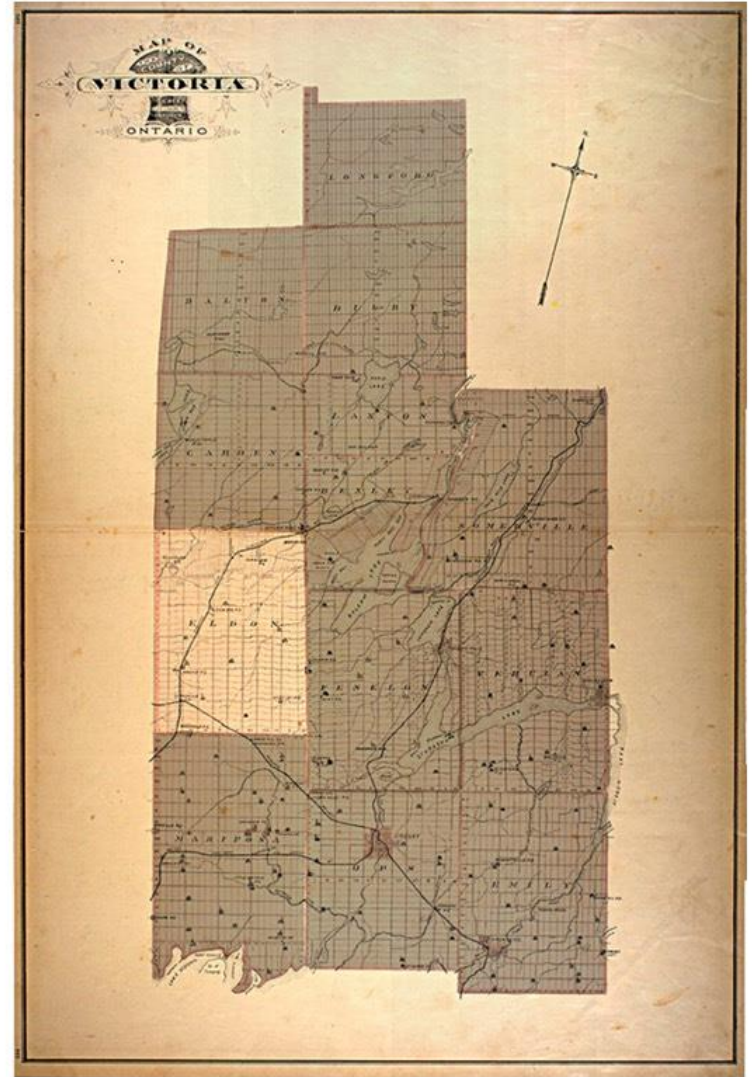


Eldon Twp, Victoria County



Legend

SS#n Eldon school section: photo present



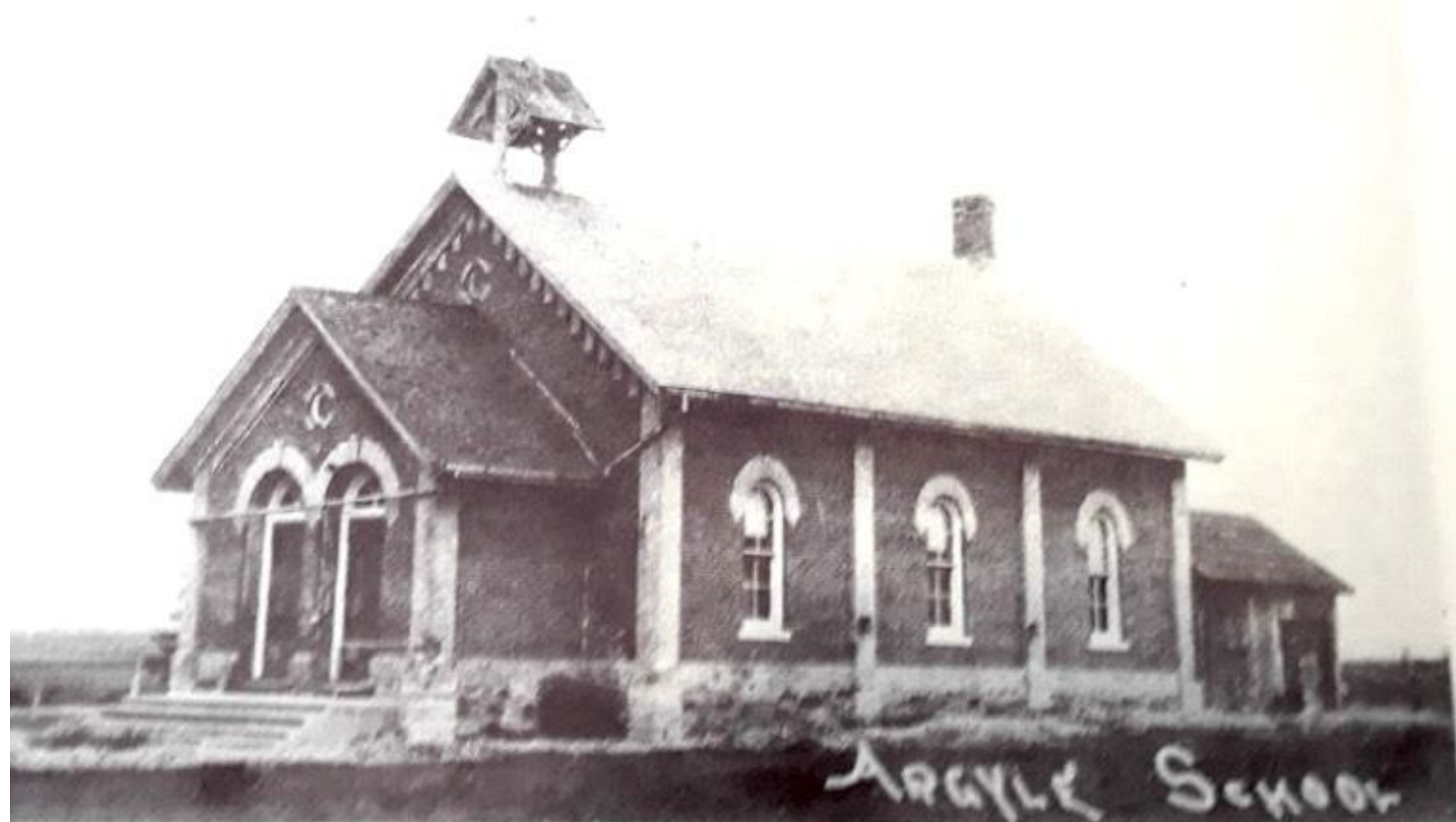
If you have any information about, or photos of, the early schools in this area, please leave your name and contact information at the booth displaying the "Heritage Registration" sign.



SS #1B Eldon

Woodville

The first school was formed near the future site of the village of Woodville. Being on the boundary with Mariposa Township, it attracted students from both townships. This led to confusion with Lorneville over which section was SS #1, so they both used the number 1.



SS #2A Eldon

Argyle

The next concession road was the Argyle Road, and adopting the south to north spread of settlement, Argyle School was labelled SS #2.



SS #1A Eldon

Lorneville

Lorneville was the next up the Road from Woodville and hence took the number 1 in the confusion. It is a huge school house reflecting the large rural population at the time.

SS #2B Eldon

Grass Hill



Another wave of settlement was moving north from Lindsay and Mariposa Township in the south-east section of the township. Thus we have a second SS #2 based at Grass Hill.



SS #3 Eldon

Sandringham

This small community was located north of the Glenarm Road in central Eldon Township. The school house is no longer in existence.



SS #4 Eldon

Hartley

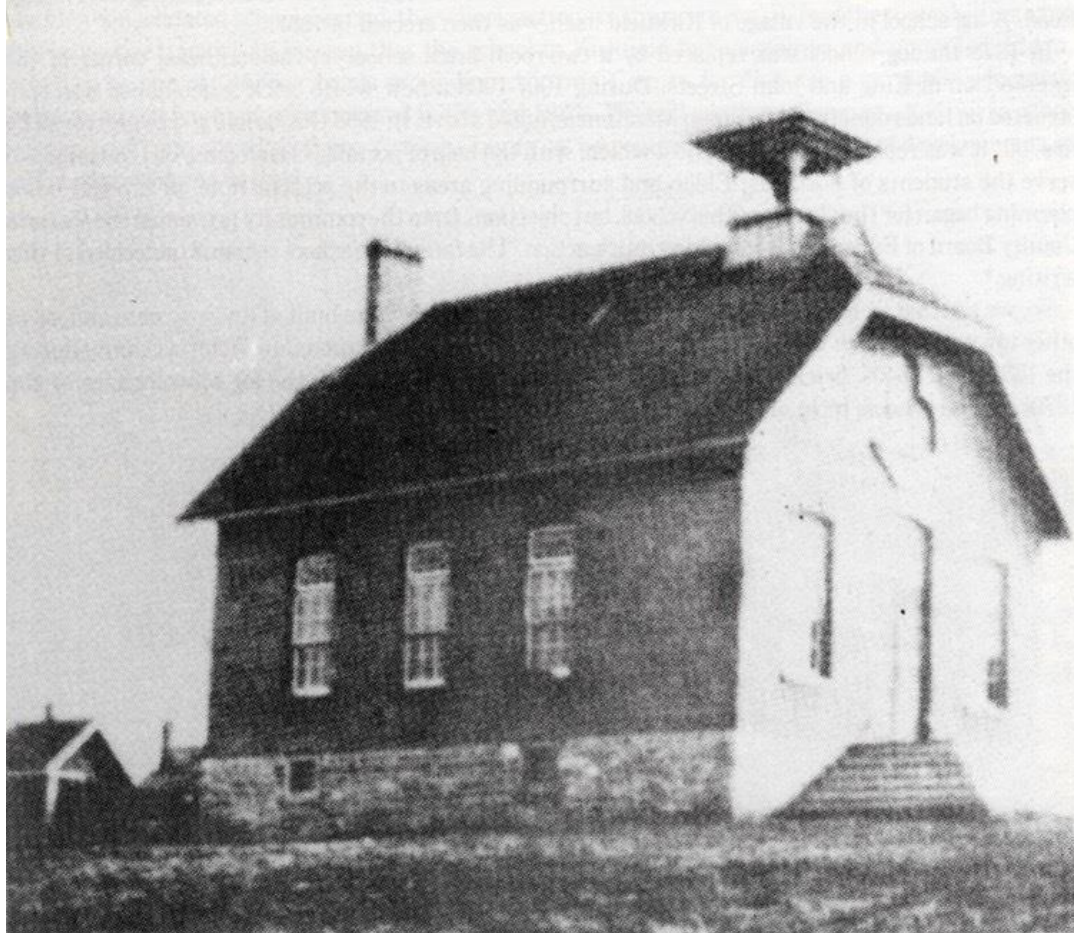
The village of Hartley was started in the south-east corner of the township.



SS #5 Eldon

Bolsover

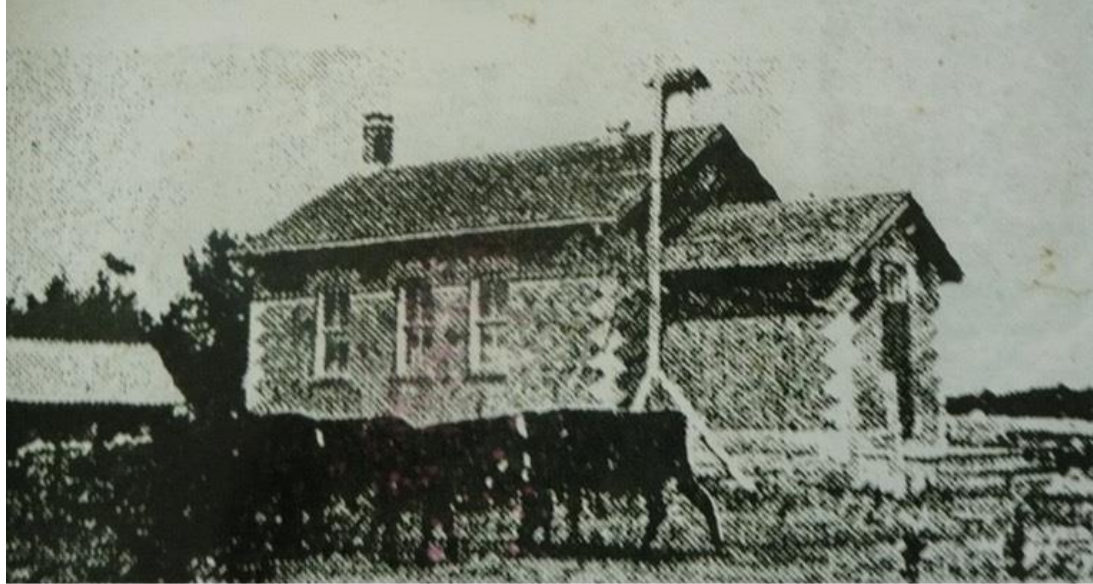
Early settlement trickled east-west along the old Portage Road between Lake Simcoe and Balsam Lake. This pioneer roadway spawned 2 settlements at Bolsover and Kirkfield. The Bolsover School was one of the most decorative school houses in the county!



SS #6 Eldon

Palestine

A school section was set up to serve the east edge of Eldon north of the Glenarm Road. Much of the land to the north contained shallow soils and was abandoned to grazing.



SS #7 Eldon

Eldon Station

When the railway came through central Eldon, it provided a station in central Eldon between Argyle & Kirkfield. The hamlet of Eldon Station also required a school, SS #7.



SS #8 Eldon

Kirkfield

The railway was a boon to north Eldon and led to the growth of Kirkfield. The station was a bit north of the village, on the road to the lift locks. The main depot for the Toronto and Nippising Railway was actually at the northeast corner of Eldon at Victoria Road. The village of Kirkfield and the railways also produced one of the most famous railway magnates in Canada: Sir William Mackenzie. Railways attracted his attention and by 1914 he was rich and famous as the founder of the CNoR (Canadian Northern Railway), later CN.