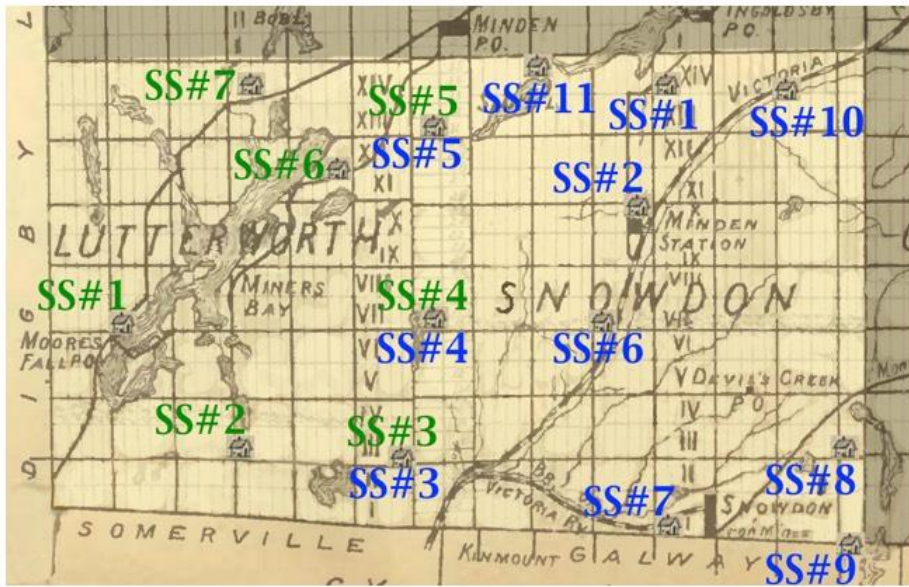


One Room Schools: Haliburton County

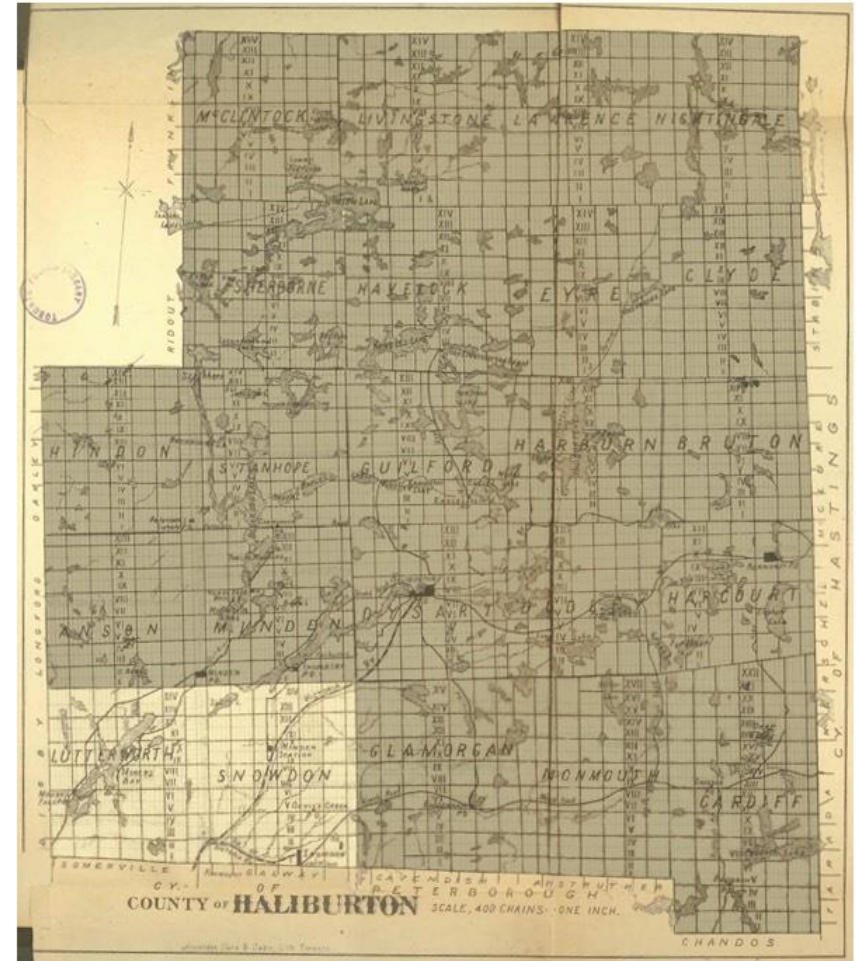
Lutterworth & Snowdon Twps, Haliburton County



Legend

SS#n Lutterworth school section: photo present

SS#n Snowdon school section: photo present



If you have any information about, or photos of, the early schools in this area, please leave your name and contact information at the booth displaying the "Heritage Registration" sign.

SS #1 Lutterworth

Moore Falls



One of the few stone schools in Haliburton County (despite the abundance of stones!). A stone mason was the deciding factor, in this case the Valentine Family. They also built the Miner's Bay Church.

**SS #2 Lutterworth
Buller**



**Buller was named
after General Buller,
who commanded in
the Boer War
(1899-1902)**

SS #3 Lutterworth
SS #3 Snowdon
Iron Mine



This union section drew from students around Davis Lake and Howland Junction. It was named after a (brief) iron mine in the area just north of Kinmount. The teacher in this photo (Agnes Petty) left posterity a diary of her year at the school.





SS #6 Lutterworth Housel's

- | | |
|----------------------------|--------------------|
| 1. Ed Valentine | 15. Joe Gillespie |
| 2. Charlie Tripp (?) | 16. Ira Gillespie |
| 3. Harvey Tripp (?) | 17. ? |
| 4. Edith Porter | 18. ? |
| 5. ? | 19. ? |
| 6. ? | 20. Ellie Housel |
| 7. ? | 21. Mary Gillespie |
| 8. Dorothy Bell | 22. ? |
| 9. Ethel Valentine | 23. ? |
| 10. Lena Valentine | 24. ? |
| 11. William Valentine | 25. ? |
| 12. Duncan Valentine | 26. ? |
| 13. William (Bill) Griffin | 27. ? |
| 14. Derenda Galloway | 28. ? |

**Picture was probably
taken 1905, 1906 or 1907.**



← **SS #4 Lutterworth**

SS #4 Snowdon

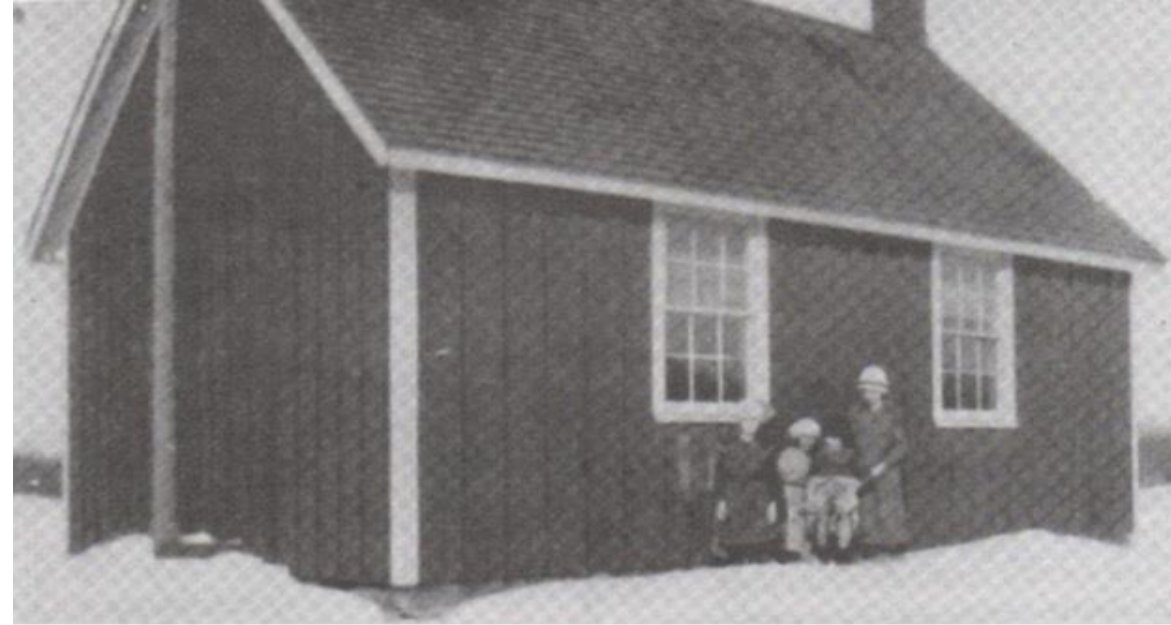
Rock School

Rock School was located on a big, flat rock across from the Upper Dutch Line. It was one of 13 school houses built along the Bobcaygeon Colonization Road between Bobcaygeon and Dorset. The Road was the earliest route for settlers to travel north into Haliburton county. All 13 schools were "union schools" because the Road was a township / county line as well!

SS #7 Lutterworth →

Bob Lake

Bob Lake was in the northern section of the township and was the last school section in Lutterworth Township.

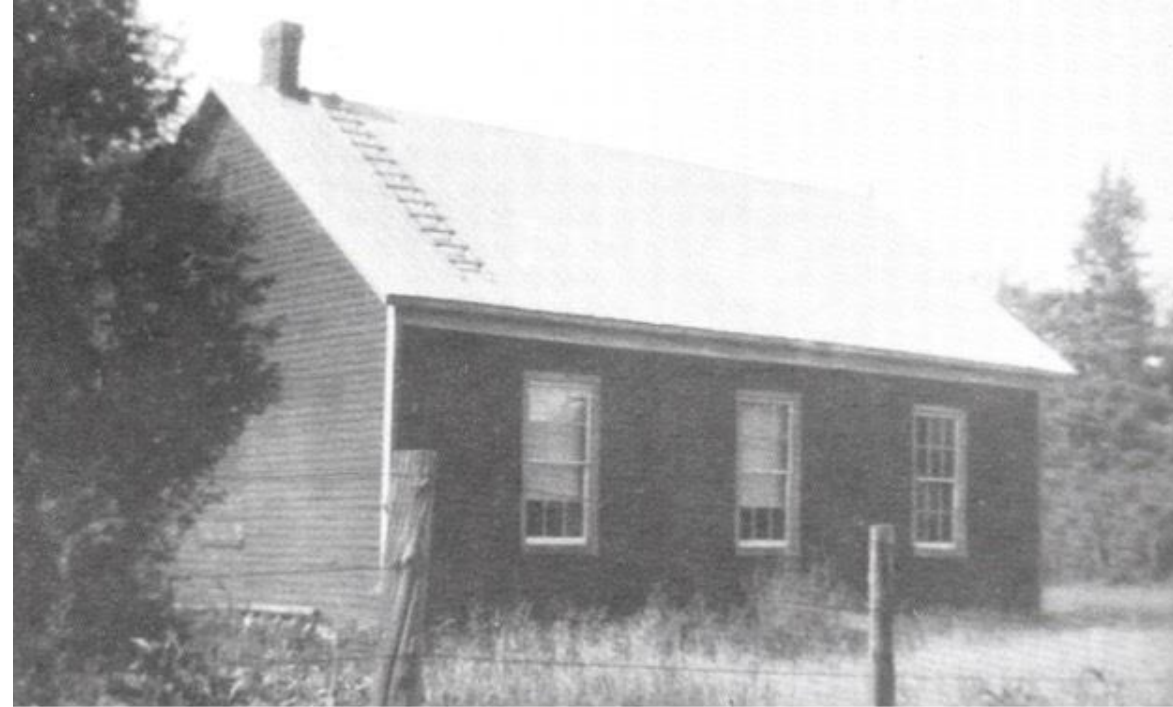


SS #5 Lutterworth

SS #5 Snowdon

The Red School

Red or Hulbig's School. The history of this school section is amply detailed in the series "Whispering Pines" by John Hulbig.



**Class
Picture
1916**



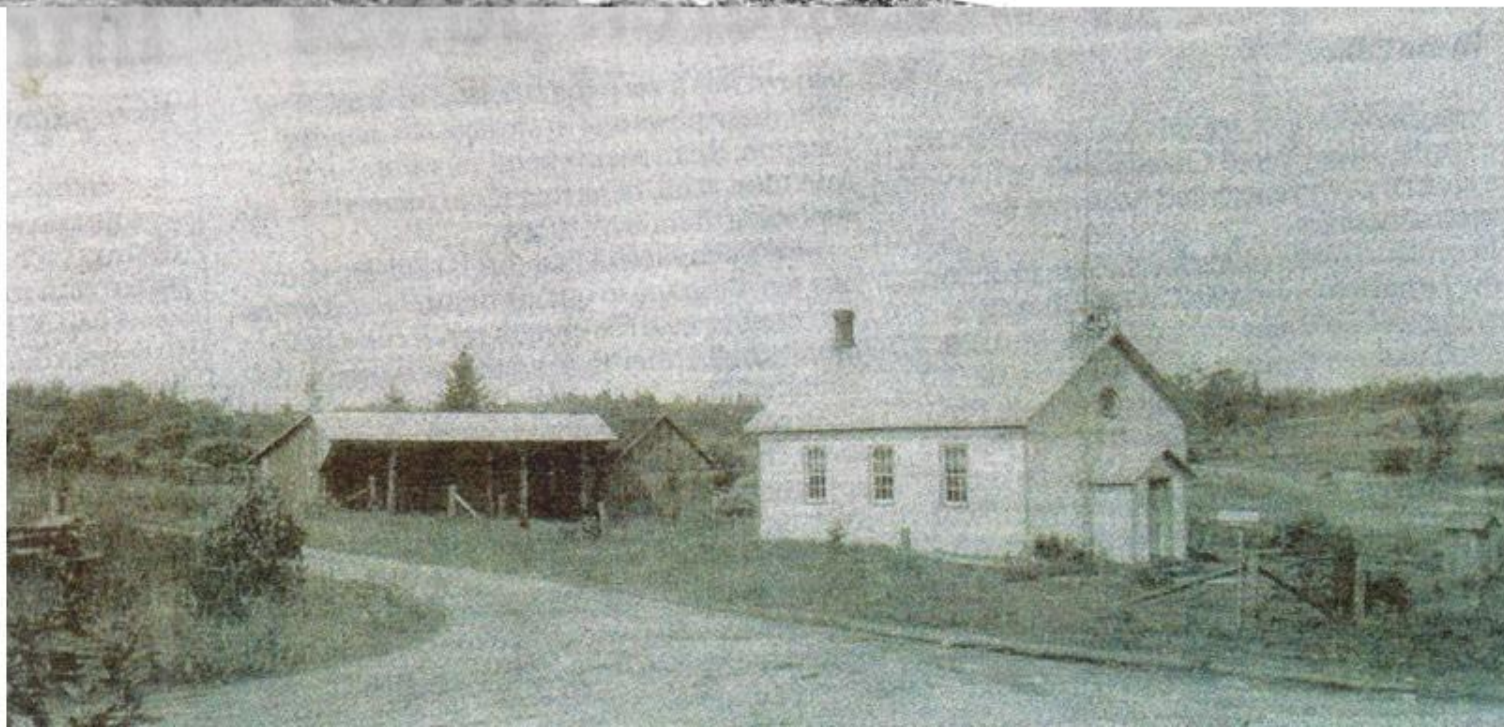
**Miss
Gladys
Dougherty**

**teacher
early to mid 1930s**



SS #1 Snowdon
Scotts Dam

SS #6 Snowdon
Dutch Line





← **SS #2 Snowdon**

Gelert

The original school is in the background; the later school is in the foreground.

SS #10 Snowdon →

Lochlin





SS #7 Snowdon

**Union with SS #5 Galway
Furnace Falls**

Furnace Falls School originally consisted of 2 schools; one in Galway and one in Snowdon. They were eventually combined into a union frame school. This was one of the earlier log buildings.

School Picnic, June 1916

Back row, Left to right:

Ida May Cook (teacher), Basil Carr, Charlie Shaw, Harold Carr, Emma Kylie, Millie Bacon, Iva Hardacre, Emily Shaw, Alice Stanhope.

Small children in front row are unknown.



**SS #8 Snowdon &
SS #1 Glamorgan**
Irontdale

The original union school was on the Glamorgan side of the township line. Later editions were built on the Snowdon side.



**Miss Catherine Benson
taught 1927—1928**

← **Irontdale School students**

**L to R: Ed Simmons,
Mac Hartin, Bill Procter,
Montrose Hancock &
Fred Simmons**





SS #9 Snowdon, SS #7 Glamorgan, SS #7 Galway

This union school was located on White Lake Road in Galway Township, Peterborough County, abutting Glamorgan Township and a stone's throw from Snowdon Township, both in Haliburton County.

Picture was probably taken in 1914 or 1915.

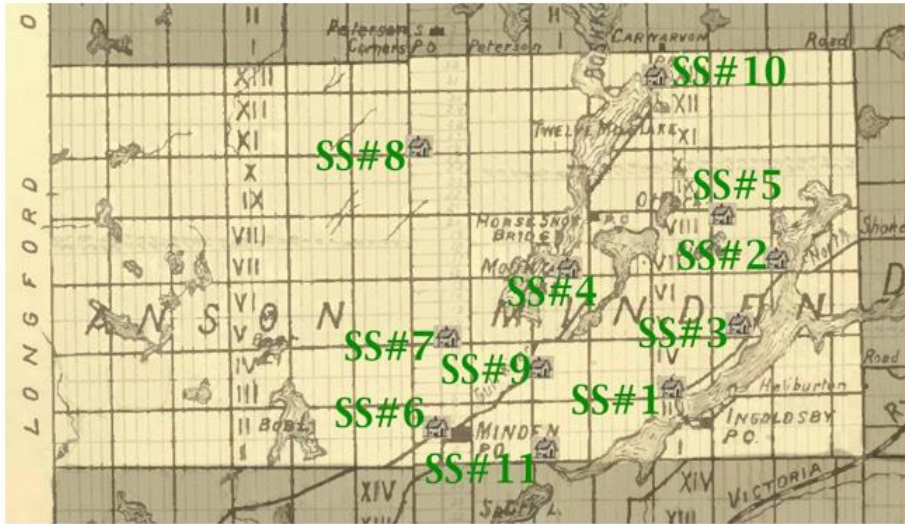


SS #11 Snowdon & SS #11 Minden

Bat Lake

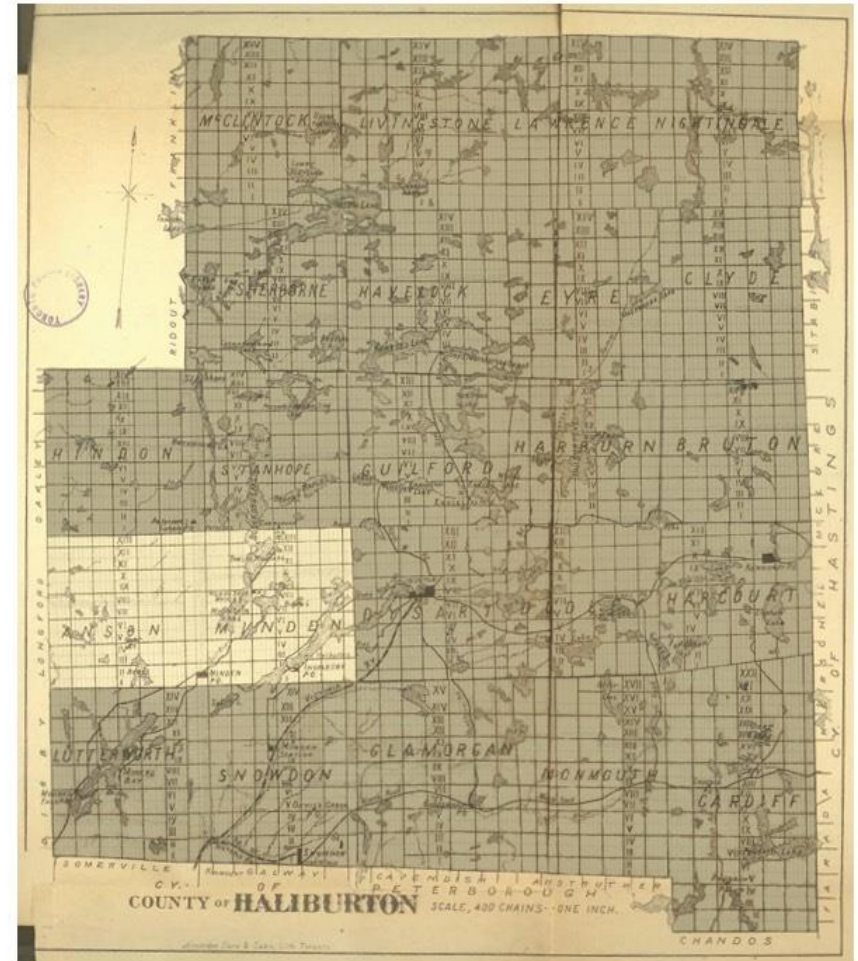
**This union school was built about 1895 at the junction
of Minden-Gelert Rd. and Canning Lake Rd.**

Minden & Anson Twps, Haliburton County



Legend

SS#n Minden school section: photo present



If you have any information about, or photos of, the early schools in this area, please leave your name and contact information at the booth displaying the "Heritage Registration" sign.

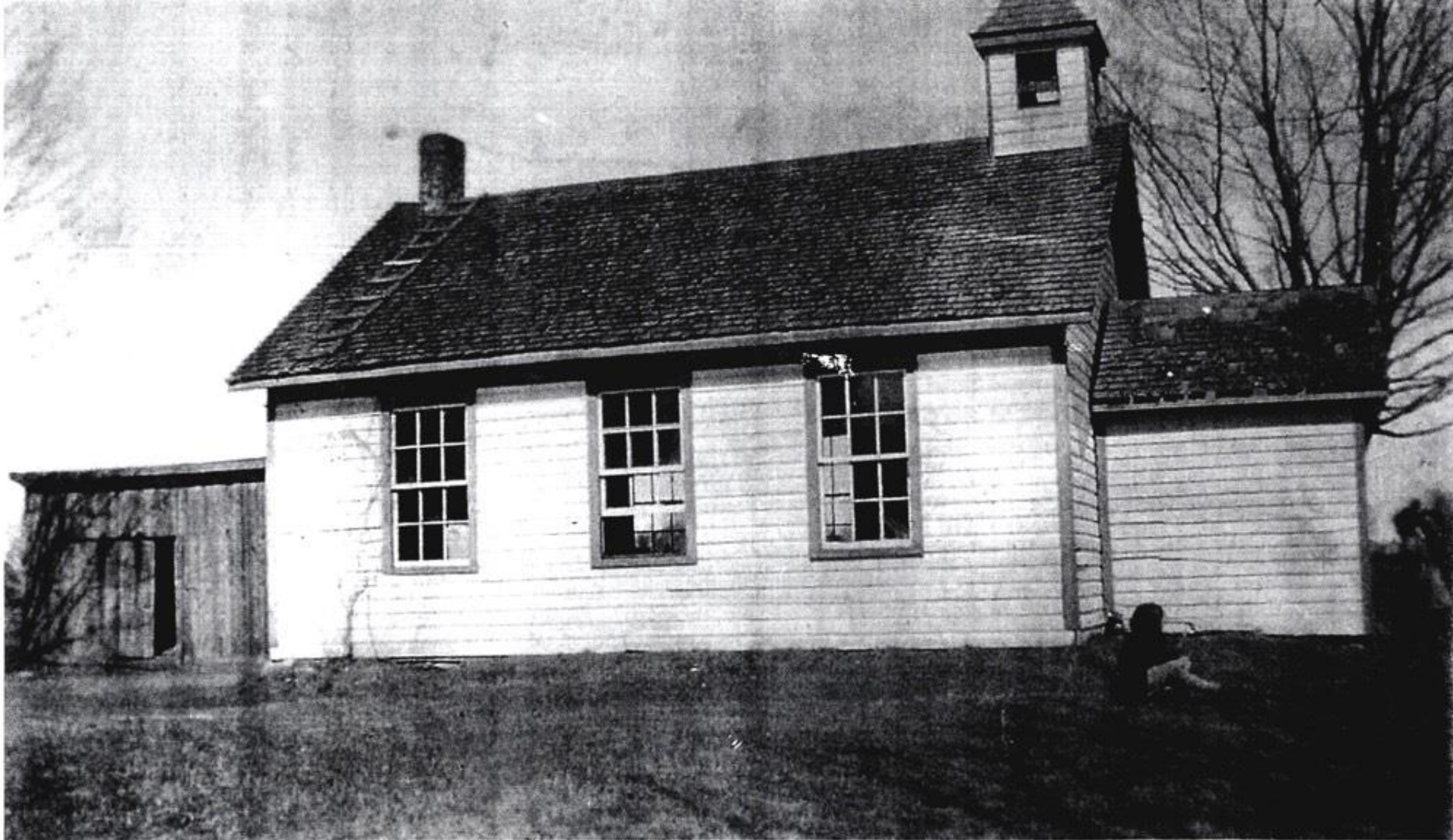
SS #1 Minden
Ingoldsby



Back row: Albert Loucks, Merrill Puffer, Orie Loucks
Front row: Doug Casey, Leslie Hogg, Barbara Loucks,
Audrey Hogg, Keith Hughes, Wren Hughes
The class picture of this happy group was taken in the
early 1940s.



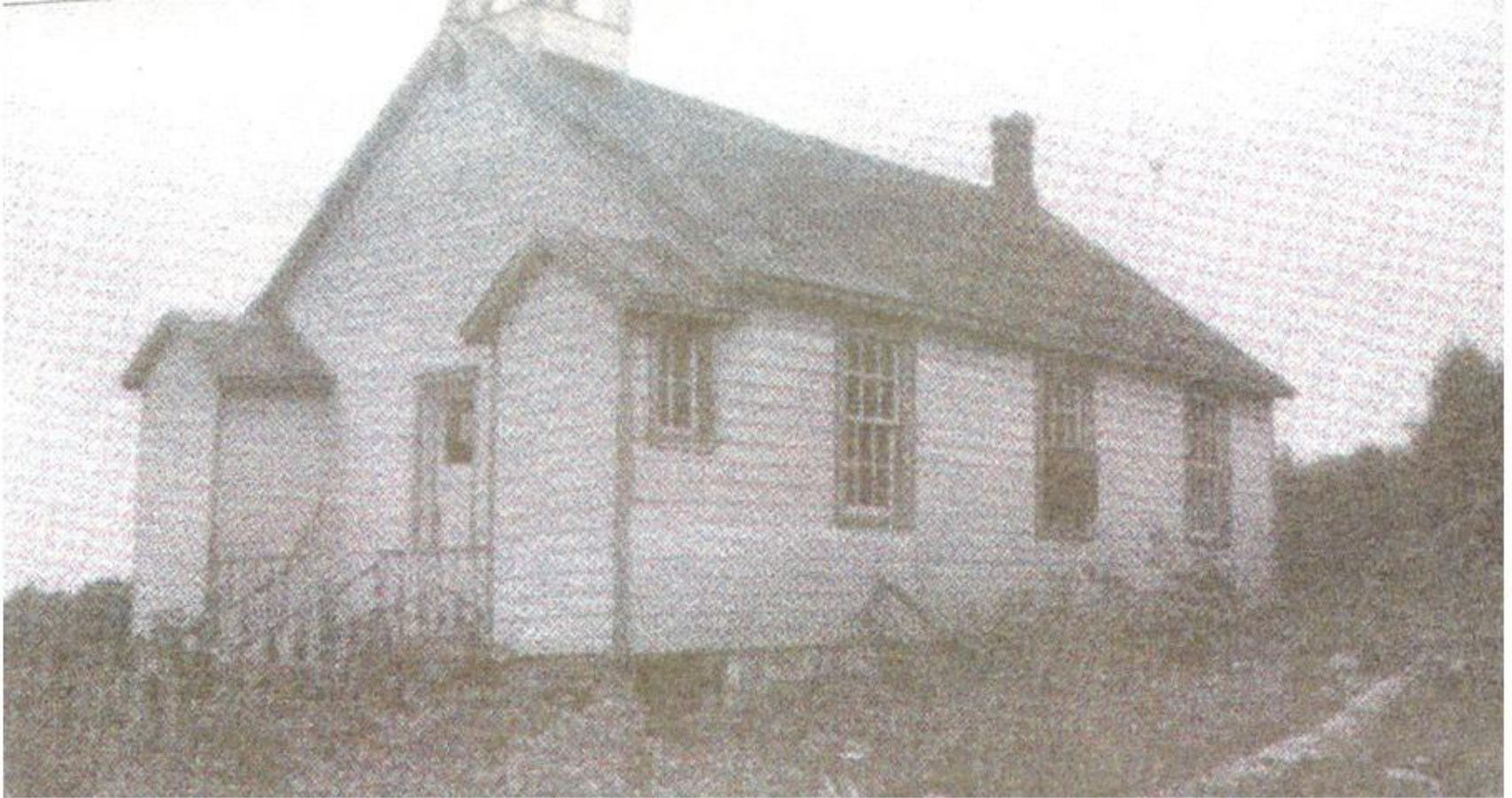
Ingoldsby was on the earliest water route between Minden and Haliburton Village. The earliest settlers lived on both sides of the Canning Lake-Kashagawigamog Lake route. There were 3 schools along this lake chain. It was also called the Loucks School after a prominent local family.



SS #2 Minden

Crofts - Evergreen

Crofts-Evergreen was near the border with Dysart and was even merged with SS #2 Dysart in later years.



Circa 1930; note the two "indoor outhouses", a vast improvement over "the house at the back". These facilities required a pail of water a day to keep them operating.

SS #3 Minden

Hillcrest School, Allsaw

The Allsaw Flats contained some good farm land and was a focus of early settlement



← **SS #4 Minden**

Elsie

Elsie was a small settlement at the south end of Twelve Mile Lake. It was named after Elsie Gilbert, a charming young daughter of the first post master.

SS #6 Minden →

Minden

A Continuation School was built in the 1920s to serve students from the area with high school courses. The stone school still stands and is a part of the much expanded Archie Stouffer district school today.



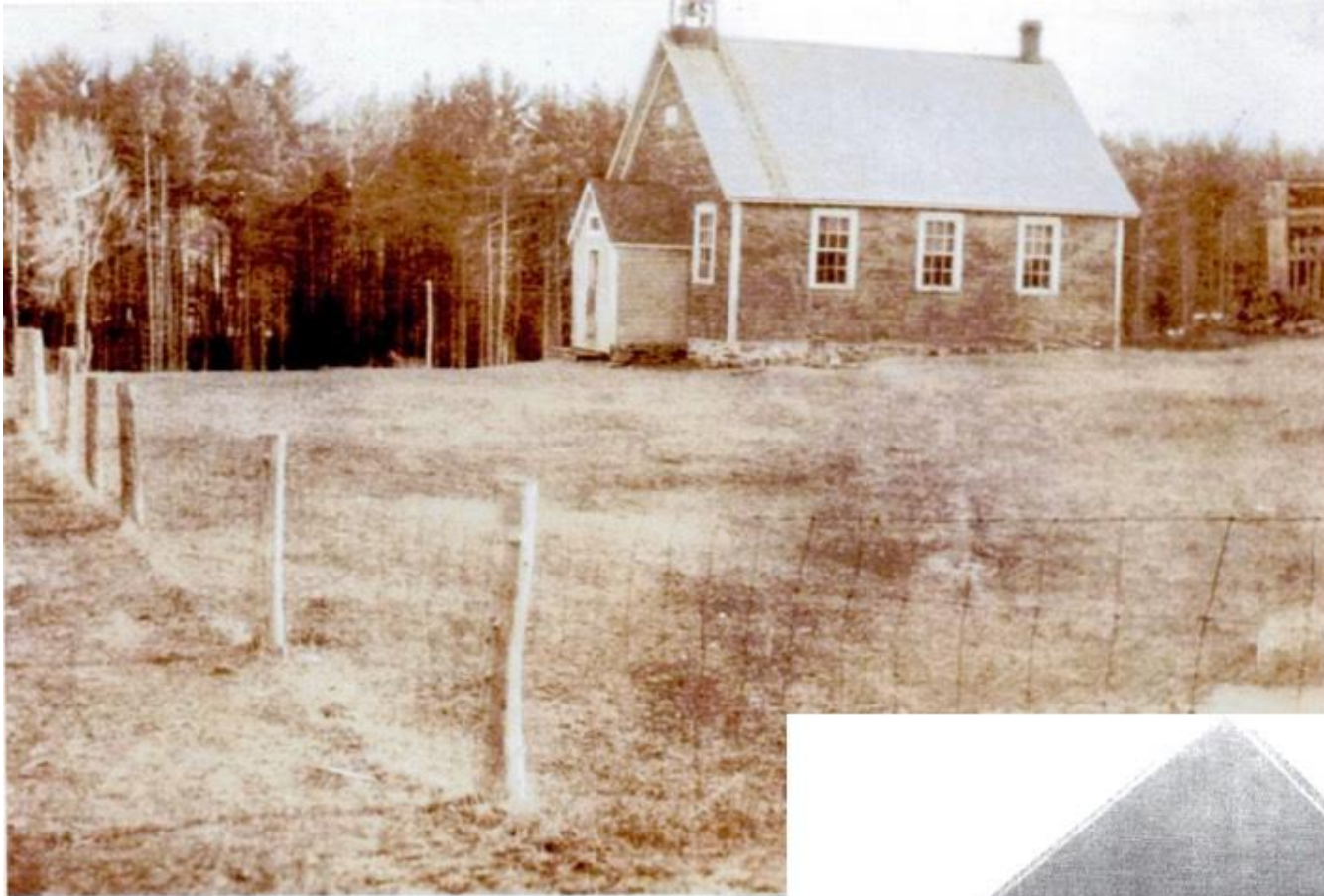


SS #5 Minden
Blairhampton

This school has a rather unique set up. It is 2 stories with a stone wall basement and slab siding upstairs. It was essentially a 2 room school, with a class in each level. There was an indoor privy as well!

Blairhampton was another school section in central Minden Township filling in the gap between Elsie, Allsaw & Bethel Schools.

SS #7 Minden
Scotch Line



This school was the second of 3 schools along the Bobcaygeon Road a few miles north of Minden. It also included students from Anson Township, but was never considered a union section because Anson was never a separate municipality.





SS #8 Minden
McKelvie-Prentice

The third of the 3 schools along the Bobcaygeon Road in Minden Township, it was named after local settler families. It was the first to be closed as the population declined along this section of the Road.



SS #9 Minden
Bethel

A settlement in southern
Minden Township that grew
up around Bethel Church.



Back row: Alice Stevens, Lila Nesbitt, Hazel Robertson, Marjory Nesbitt
Middle row: Bruce Nesbitt, Mavis Stevens, Verna Robertson, Mabel Davis
Front row: Garnet Davis, Velma Davis, Gladys Robertson, Velda Stevens

The class picture of this apprehensive group was taken in 1927 or 1928



Back row: ?, Rita Stevens, Roy McNeil, ?, ?, Elmo Archer, Bertha Pritchard, Allan Hobden, ?

Middle row: Edward Archer, ?, ?, ?, Clare Hobden, Hazel Nesbitt, ?, ? Hogg

Front row: Shirley Hogg, George Nesbitt, ?, Andy Stevens, Inez Archer
Fred Prentice, Hildred Hogg, Ray Pritchard, Rita Hogg, Ella May Nesbitt

Class picture taken before 1915

SS #9 Minden

Bethel



SS #10 Minden, SS #1 Stanhope

Brown's Corners, 1894

A union section with Stanhope, it served the area around Brown's Corners (Carnarvon now) at the intersection of the Bobcaygeon and Peterson Roads.



SS #11 Minden & SS #11 Snowdon

Bat Lake

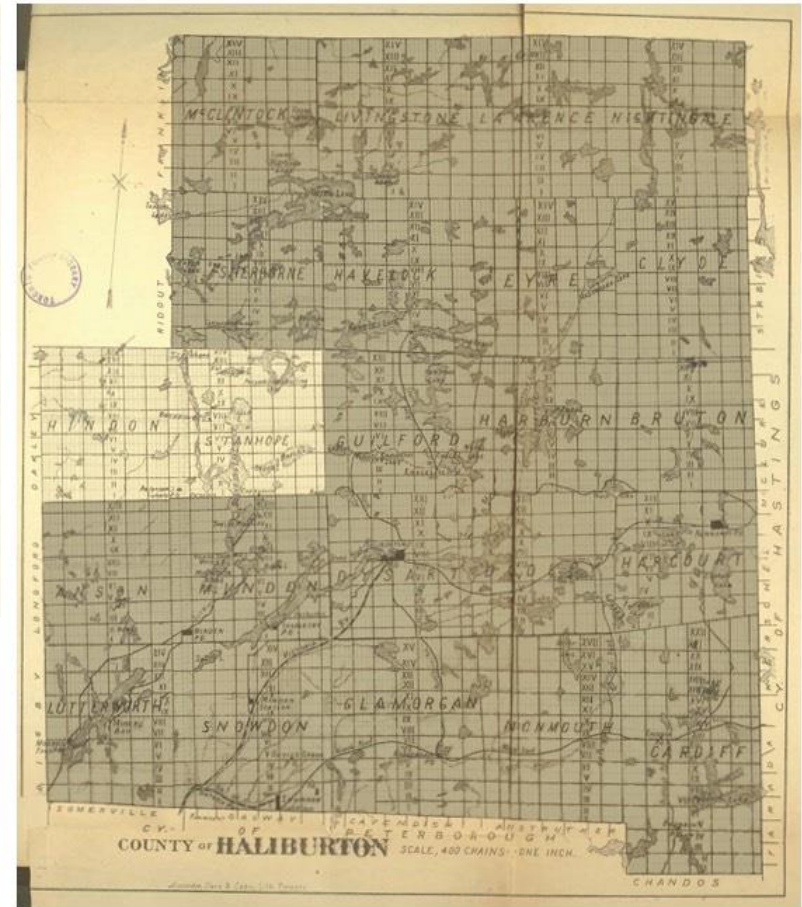
**This union school was built about 1895 at the junction
of Minden-Gelert Rd. and Canning Lake Rd.**

Stanhope & Hindon Twps, Haliburton County



Legend

SS#n Stanhope school section: photo present



If you have any information about, or photos of, the early schools in this area, please leave your name and contact information at the booth displaying the "Heritage Registration" sign.



SS #1 Stanhope, SS #10 Minden

Brown's Corners, 1894

A union school with Minden, it served the area around Brown's Corners (Carnarvon today) at the intersection of the Peterson and Bobcaygeon Roads.



SS #2 Stanhope

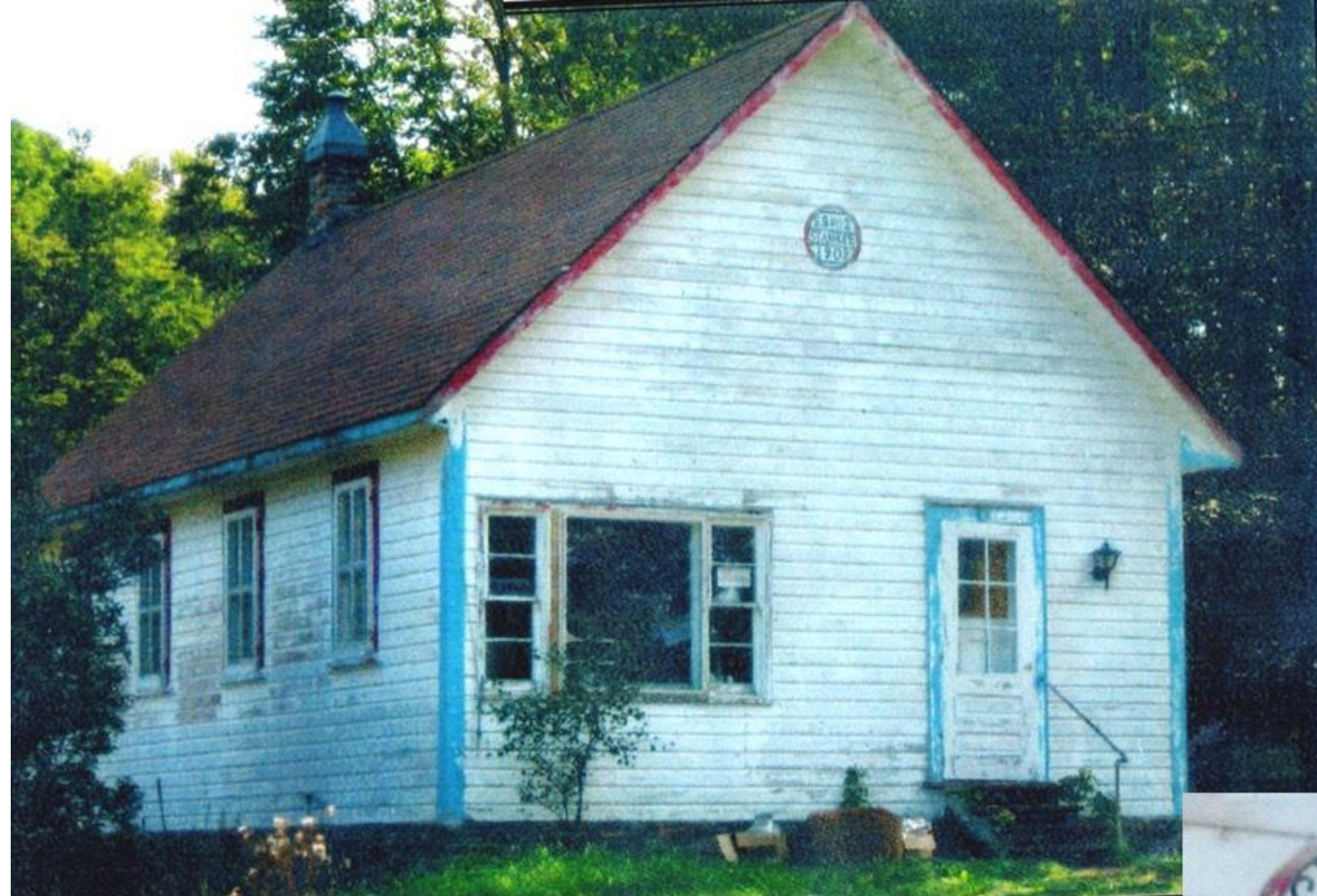
Upper Maple Lake

This school has an oversized bell tower, an unusual design for pioneer schools. It also has more windows than usual. It served the south-east corner of the township, south of the Maple-Grass Lake system.

SS #2 today



Muskoka Haliburton Orillia - The Lakelands Association of REALTORS®

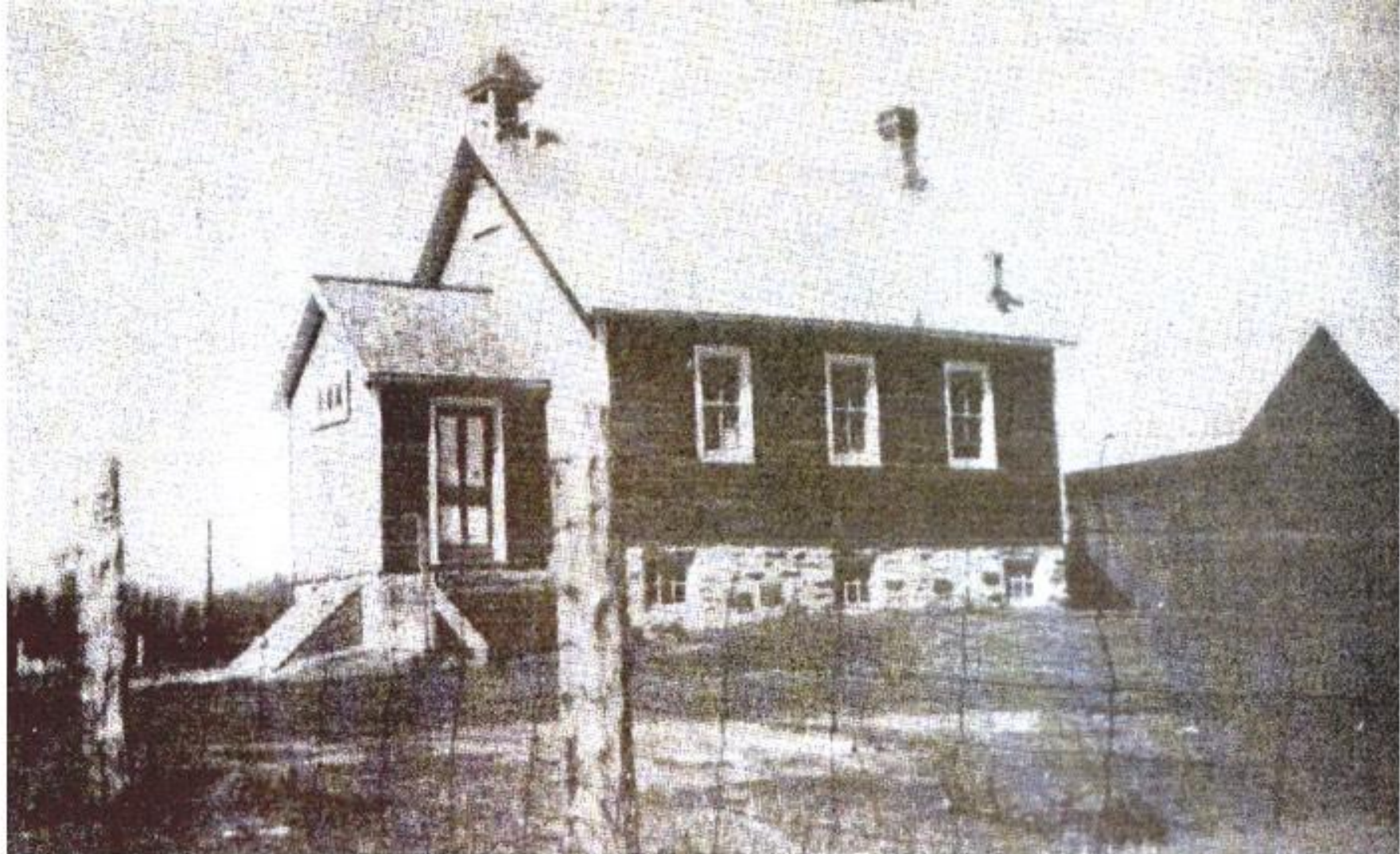


SS #2 Stanhope

Upper Maple Lake

**This is a later version of the school (1908)
after the first school was destroyed.**

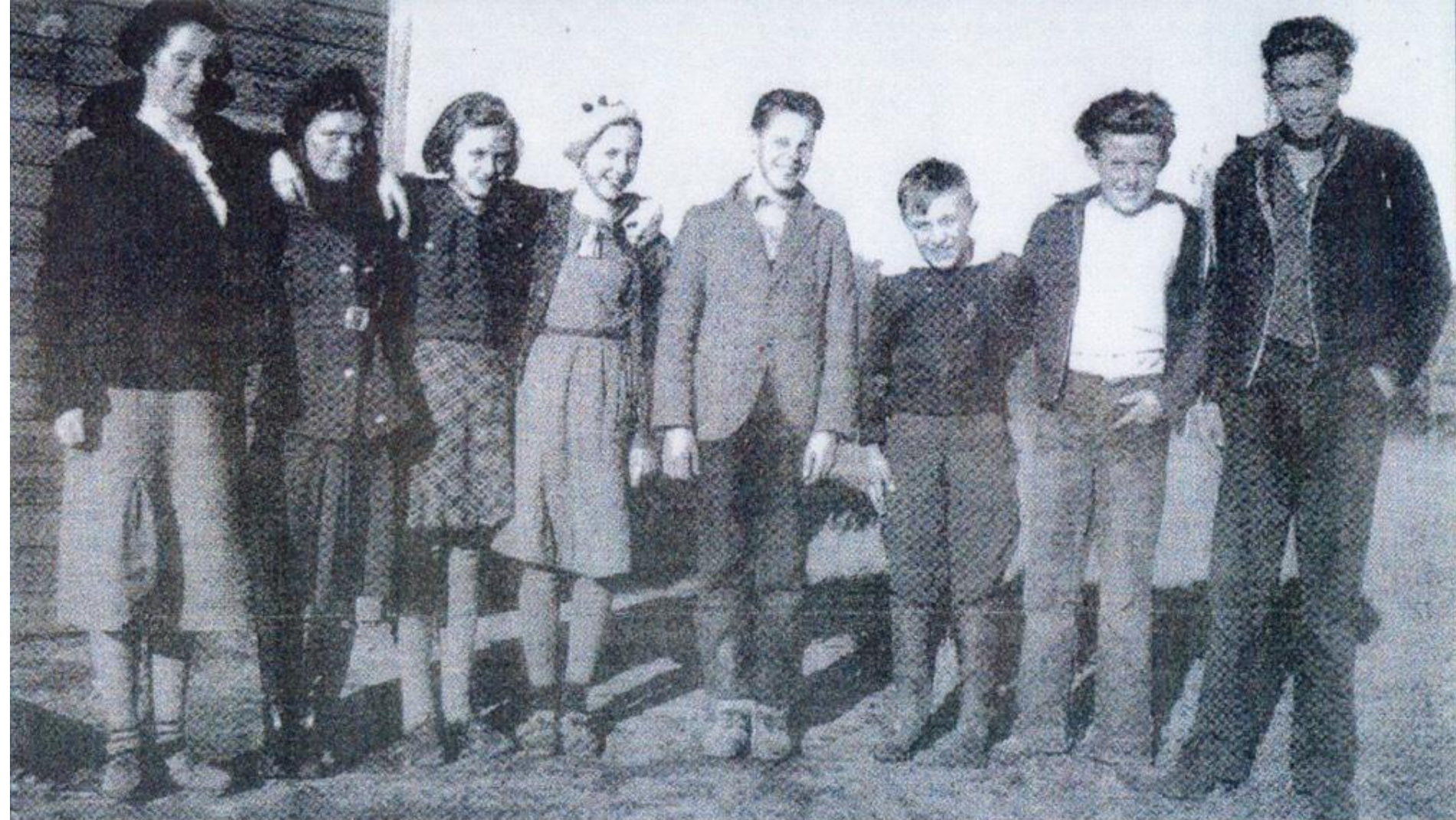




SS #3 Stanhope

Boshkung

**Boshkung was located west of Boshkung Lake.
Earliest access was gained via the Bobcaygeon Road.**



Frederica Bancroft, Ruth Wilson, Olga McGuire, Rosamond Oliver, Raymond Oliver, Conway McGuire, Jim Welch and Murray McGuire
1937 or '38

SS #4 Stanhope

Hall's Lake

Located at the north end of this lake chain feeding the Gull River system. In the 1930s, the Road (now Highway #35) was changed and this school was now on the main highway.

SS #5 Stanhope

Lower Maple Lake

Note the one pony-power school bus used to transport students to both Lower and Upper Maple Lake schools.

Photo taken 1965.

Lower Maple Lake served families who settled on the north side of the Maple Lake chain. Today it serves as the Stanhope Museum and hosts the annual Stanhope Heritage Days.



Photo taken 1947. From left are:
Back row: Phyllis Dawson, Betty McPhail, Howard Thompson, Keith Harrison and Don McPhail.
Middle row: Cecil Morrison, Everitt McPhail, Etta McPhail, Hughie McPhail, Gerald Dawson and Eric Thompson.
Front row: June McPhail, Shirley Dawson, Bruce Cook, Earl Dawson and Jack Harrison.





SS #9 Stanhope
Hindon Hill

Hindon Hill was a union school with the virtually unsettled Hindon Township. It was located along the Bobcaygeon Road just north of Peterson's Corners (now a ghost town!) and served the vanished community of Hindon Hill. This school is now preserved in the Minden Museum.

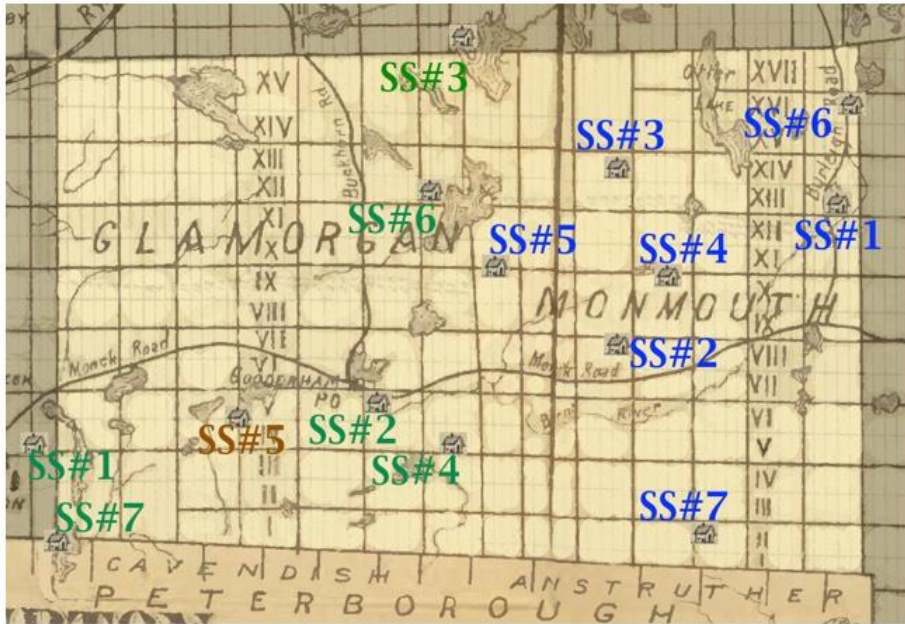


SS #10 Stanhope, F Sherborne

Pine Springs

The Pine Springs School served a small settlement along the Bobcaygeon Road between Ox Narrows and Dorset. This fine stone house was the last school in the community and is still standing today!

Glamorgan & Monmouth Twps, Haliburton County

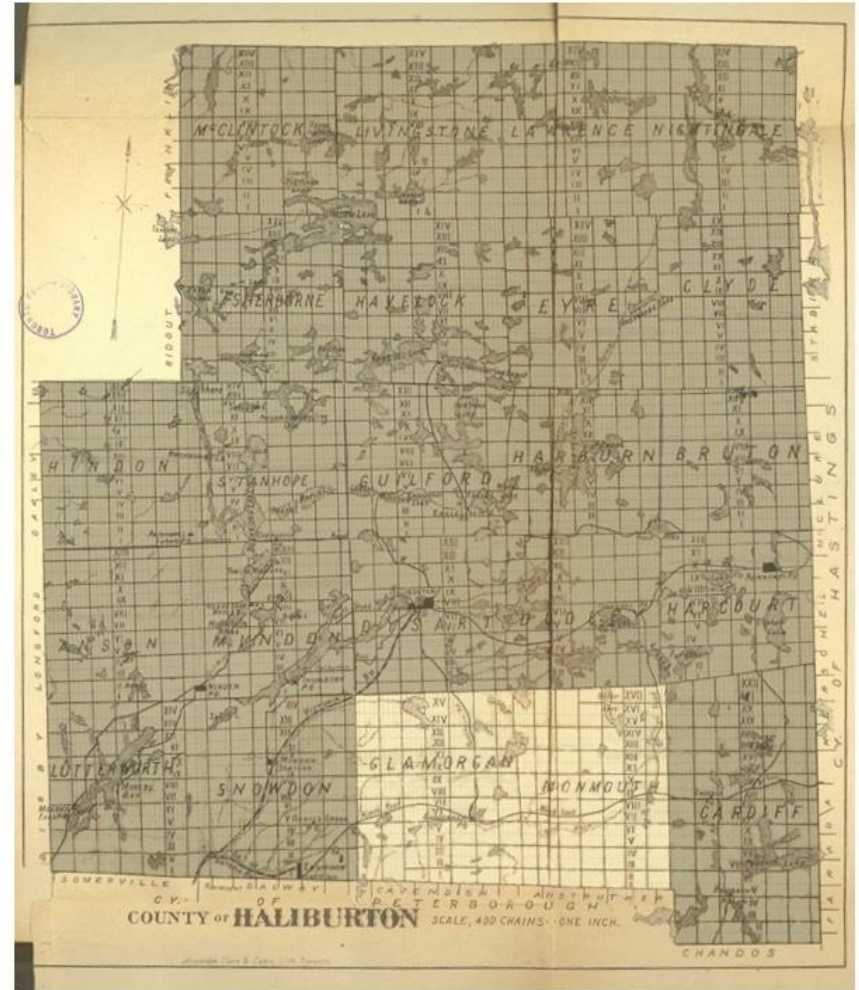


Legend

- SS#n Glamorgan school section: photo present
- SS#n Glamorgan school section: no photo
- SS#n Monmouth school section: photo present

Schools without photo

SS#5 Glamorgan - Contau Lake



If you have any information about, or photos of, the early schools in this area, please leave your name and contact information at the booth displaying the "Heritage Registration" sign.



SS #1 Glamorgan

**Union School with SS #8
Snowdon.**

Called Irondale School.

This is the second school house, the original log school was lost by fire. The third School at Irondale still exists and is now a community centre. The wooden structure in the foreground is a gate arch, unusual in pioneer schools. It was not used for "hangings" (as may appear), but some teachers may have wished...

SS #2 Glamorgan

Gooderham

Beside the Methodist Church



An original log building was replaced by this frame structure. In 1920 this school was replaced by the brick consolidated school house. Gooderham had 4 school houses over the years until the last amalgamation.

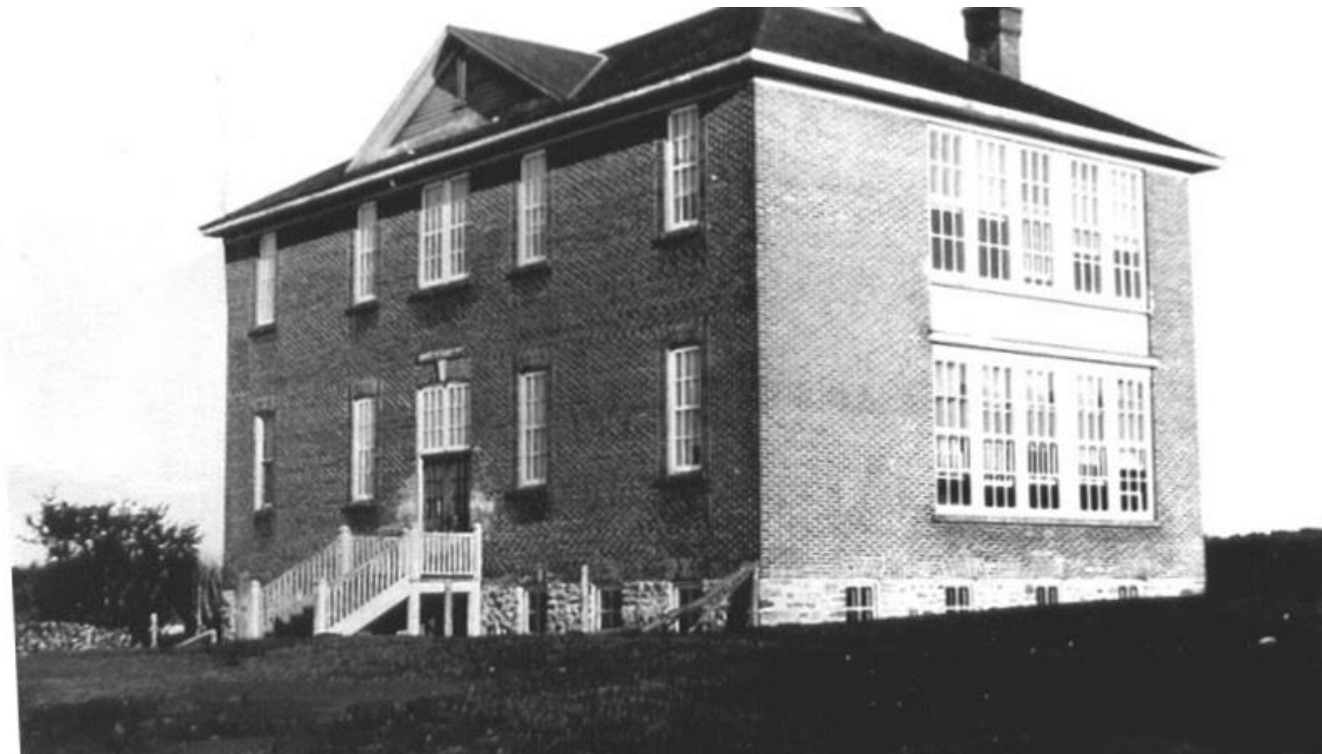
SS #3 Glamorgan

Minnicock Lake

circa 1930



**Glamorgan
Consolidated School
Gooderham**





SS #4 Glamorgan

Trooper Lake 1905

**Back row: Alma MacDuff, David MacDuff, Mae Hope, Royal White, Jack Adams, Tressa Clemens
Front row: Melvin Lake, Grace Lake, Fred Hope, Nellie MacDuff, Susie Lake, Mildred Clemens,
Laura Hope, Fred MacDuff, Corbin Lake - Teacher: Mrs. Whitehead**



SS #6 Glamorgan

Ursa

In 1926, this school was closed; the class amalgamated with that of Monmouth SS #5 and moved to a church near the Monmouth border.



1912

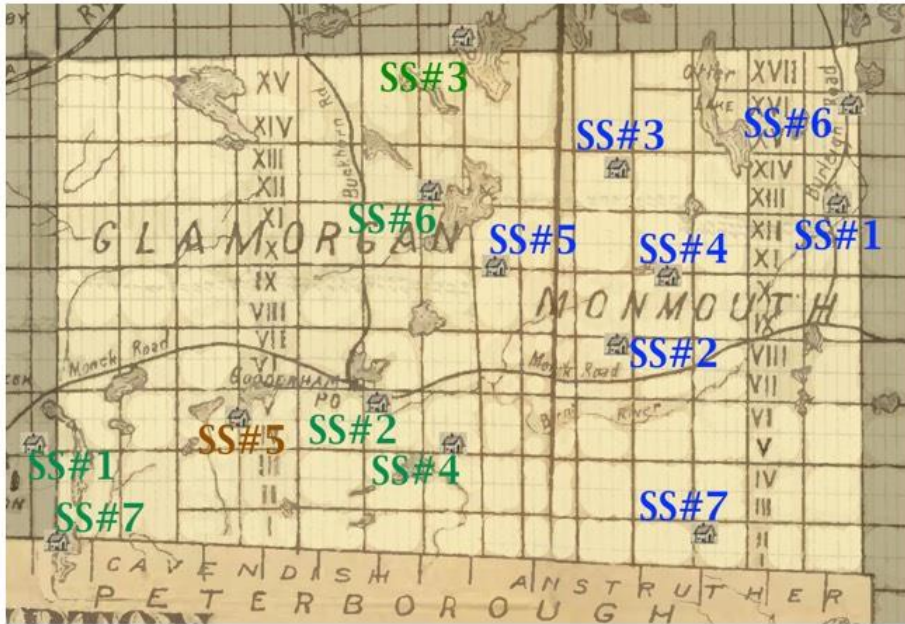
Standing: Cora McNeily, Mary Alsop, Mary Madill, Ida Graham, Edith Madill, Joe Graham
Seated: Flossie Madill, Mary Riel, Hannah Riel, Emma Madill, Ross Alsop, Walter Madill
and in front: Cecilia Riel

SS #7 Glamorgan
SS #9 Snowdon
SS #7 Galway
White Lake

Located on White Lake Road in Galway Township, Peterborough County, abutting Glamorgan Township and a stone's throw from Snowdon Township, both in Haliburton County, this union school also served for Sunday church service for the local inhabitants as shown in this photograph.



Glamorgan & Monmouth Twps, Haliburton County

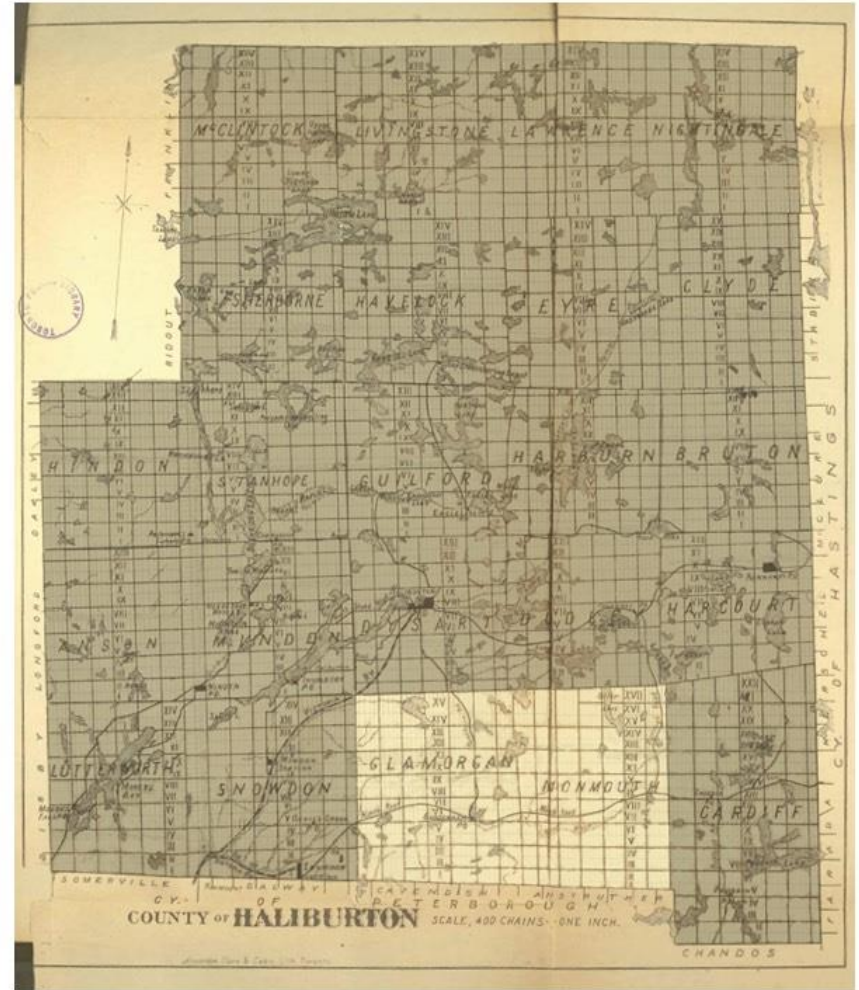


Legend

- SS#n Glamorgan school section: photo present
- SS#n Glamorgan school section: no photo
- SS#n Monmouth school section: photo present

Schools without photo

SS#5 Glamorgan - Contau Lake



If you have any information about, or photos of, the early schools in this area, please leave your name and contact information at the booth displaying the "Heritage Registration" sign.



SS #1 Monmouth
South Wilberforce

Originally the hamlet of Wilberforce was formed 3 miles south of the present village. The IB&O Railway Station was built further north in the 1880s and the village gravitated north to the present site to be near the railway.



SS #7 Monmouth →
Hadlington



← SS #2 Monmouth

Hotspur

This settlement was on the "old" Monck Road. When the road was later changed, the settlement was bypassed and eventually became a ghost town.



SS #3 Monmouth

Essonville

Paynes Road

This settlement, on the road between Haliburton and Wilberforce, contained a church and an Orange Lodge.



Working up the garden on a warm
spring day

Class picture on the same day →





← **SS #4 Monmouth**

Tory Hill

This large school was located right on the Main St and today is a home. Tory Hill got its name from the political leanings of its residents. One voter complained the residents were "all tories".

SS #5 Monmouth →

Bear Lake / Madill Settlement

School picnics were a common feature of many of the smaller communities. The Madill Settlement held this picnic at Gooderham circa 1900.

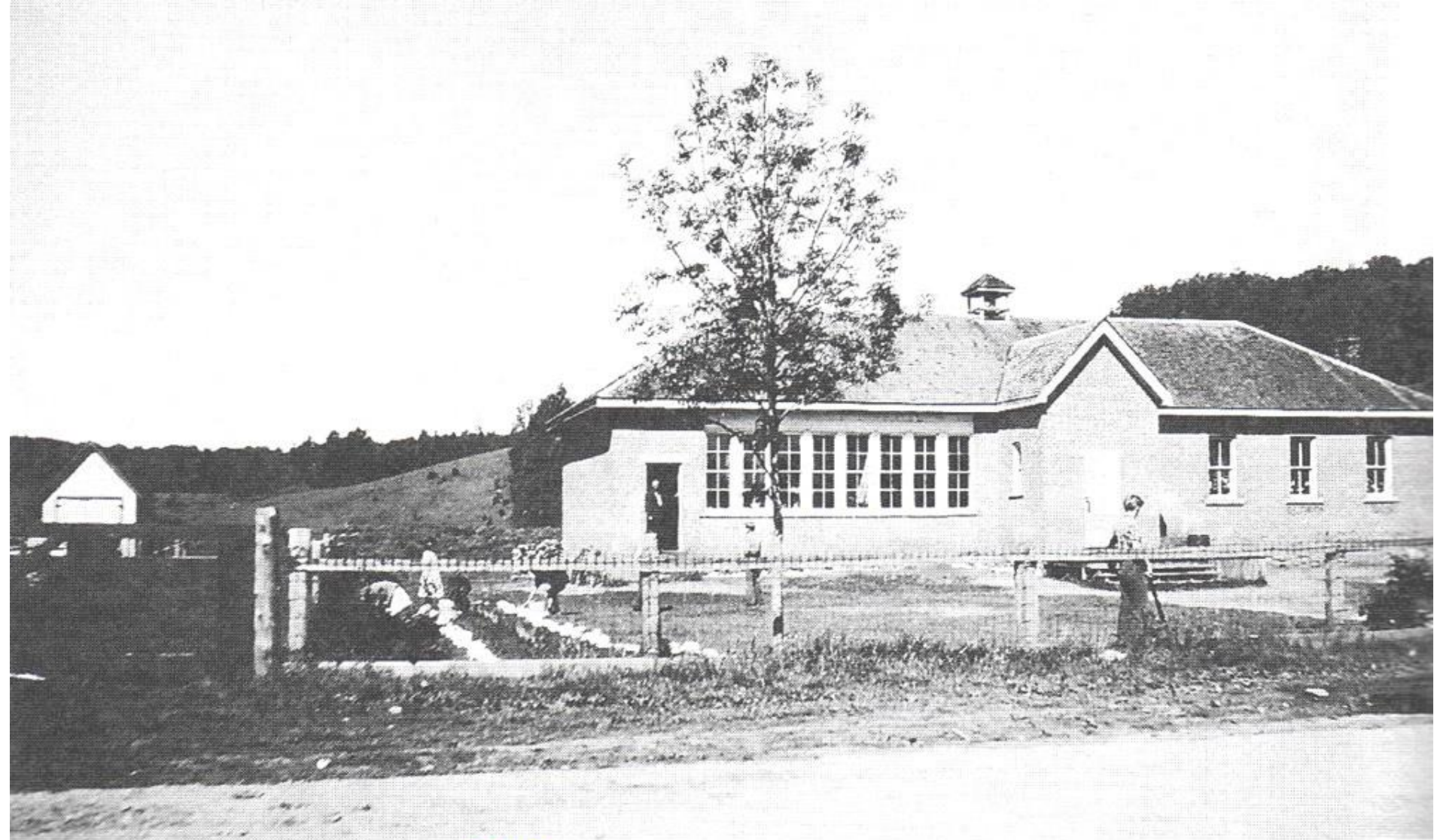




SS #6 Monmouth, SS #8 Cardiff

Wilberforce Consolidated School

Playground Equipment



SS #6 Monmouth, SS #8 Cardiff
Wilberforce Consolidated School

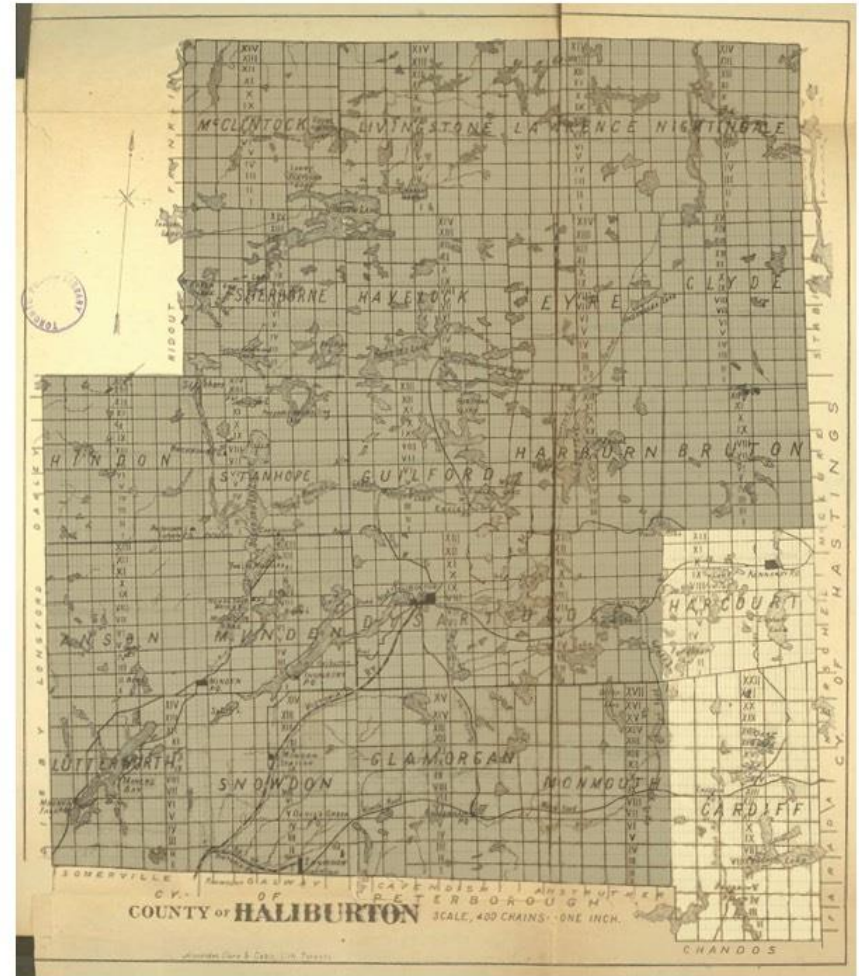
The first log school was at Dark Lake. When the railway arrived, the new school moved to the new village. Students from SS #8 Cardiff joined the new section and a consolidated school was built. It still exists today.

Cardiff & Harcourt Twps, Haliburton County



Legend

- SS#n** Cardiff school section: photo present
- SS#n** Cardiff school section: no photo
- SS#n** Harcourt school section: photo present
- SS#n** Harcourt school section: no photo



If you have any information about, or photos of, the early schools in this area, please leave your name and contact information at the booth displaying the "Heritage Registration" sign.

SS #1 Cardiff

Kidd's Corner



The first school was in the south end of Cardiff Township along the Burleigh Colonization Road. Walter Kidd, after whom the school was named, was a former lawyer, teacher and local character. He was called the "Robin Hood" of Cardiff after he fled from Game Wardens over a "disagreement" over hunting regulations. He spent at least 10 years "hiding" in the Bush to avoid the long arm of the law. The school section was eventually cancelled and later the Kidd Schoolhouse was moved to Highland Grove, restored and is now a museum (pictured).

SS #2 Cardiff

Cheddar



Cheddar was another community located on the Burleigh Road. The school was kept open until the 1920s when falling population led to its closure. Cheddar was eventually bypassed by the road network and dwindled into ghost-town status.



SS #3 Cardiff

Highland Grove South (Deer Lake)

A small settlement sprang up along the eastern boundary of Cardiff Township. Two school sections were set up named Highland Grove. SS #3 served the south end of the settlement.



SS #4 Cardiff

Highland Grove North

The school was located several miles north of the current village. The current village of Highland Grove grew up around the IB&O Railway station that only appeared after 1900. By then, the school sections were already set up. When consolidation took place in the 1920s, the new area school was built in the hamlet.



SS #4 Cardiff

Highland Grove

This last School in Highland Grove replaced several one room schools about 1930. As the school-age population declined, this school was closed. It still stands today and is used as a community centre.



SS #8 Cardiff, SS #6 Monmouth
Wilberforce

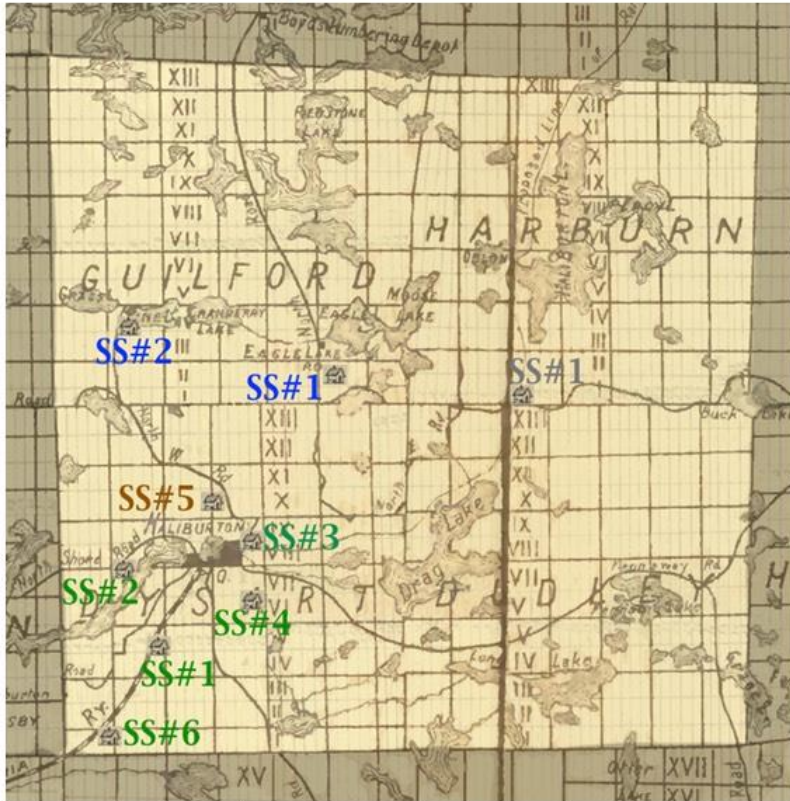
Union section: SS #8 Cardiff & SS #6 Monmouth. After the last school in Highland Grove closed, the students from north Cardiff Township were sent to Wilberforce.



**SS #1 Harcourt
Kennaway**

The Kennaway settlement was linked by a road of the same name with Haliburton Village. Harcourt Township is part of Dysart et al, and was never joined with Cardiff. The settlement never prospered and was mostly abandoned by 1920. The school was converted into a hunt camp and survives today.

Dysart, Guilford, Harburn & Dudley Twps, Haliburton County

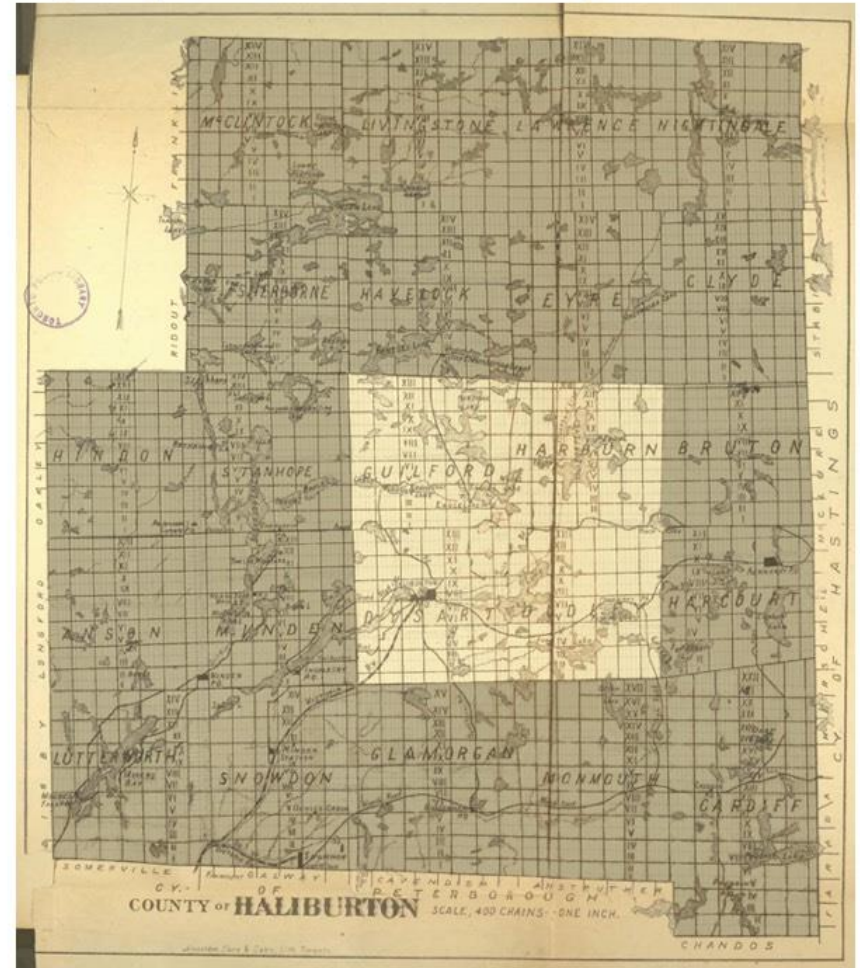


Legend

- SS#n** Dysart school section: photo present
- SS#n** Dysart school section: no photo
- SS#n** Guilford school section: photo present
- SS#n** Harburn school section: photo present

Schools without photo

SS#5 Dysart – Dart Laws / McEvoy: The section served settlers along the road between Haliburton Village and Eagle Lake. It had several designations. The student attendance was never robust, and the school opened and closed several times before being dissolved.



If you have any information about, or photos of, the early schools in this area, please leave your name and contact information at the booth displaying the "Heritage Registration" sign.



SS #1 Dysart

Goulds



SS #2 Dysart

Kilteevock School

Picture taken 1883 – 1884



SS #2 Dysart
Moon School

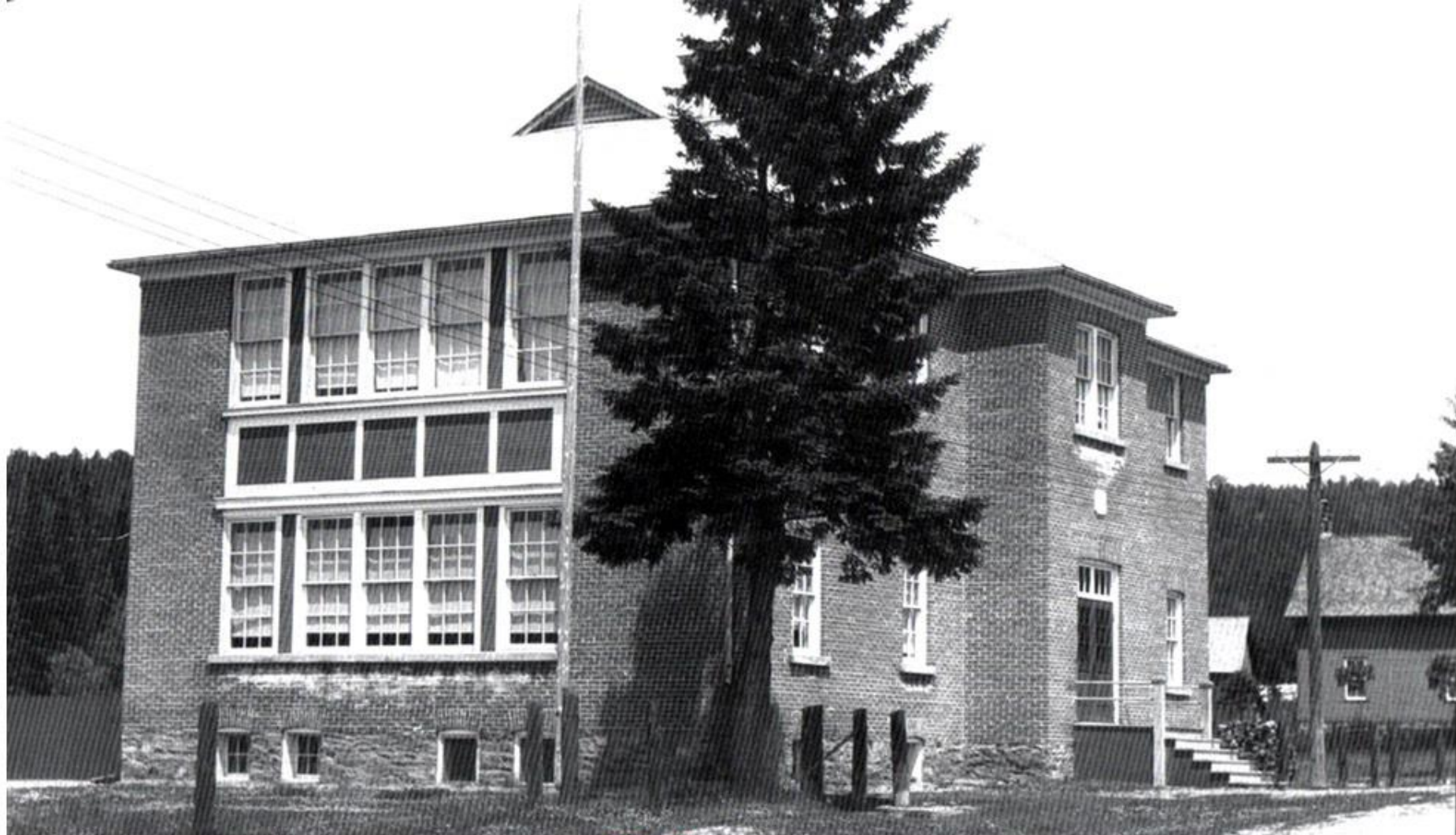
The Moon School (named after the Moon Family, not the moon) was located on the north shore of Lake Kashagawigamog. It served the students between Haliburton village and the Minden Township border. In later years, the school was rebuilt closer to the Minden line and later amalgamated with the closest Minden section.

SS #3 Dysart
Haliburton Village



Picture taken about 1912





SS #3 Dysart

Victoria Street

The original log school house was replaced first by the two doored frame structure and later the consolidated Victoria Street two story brick school. As Consolidation increased the student population attending school in the village, a new school (J Douglas Hodgeson) was built and the Victoria Street School was a primary (grades 1-3) school only. Eventually a new primary school was built and the Victoria Street School was closed.



SS #4 Dysart

Parish Line

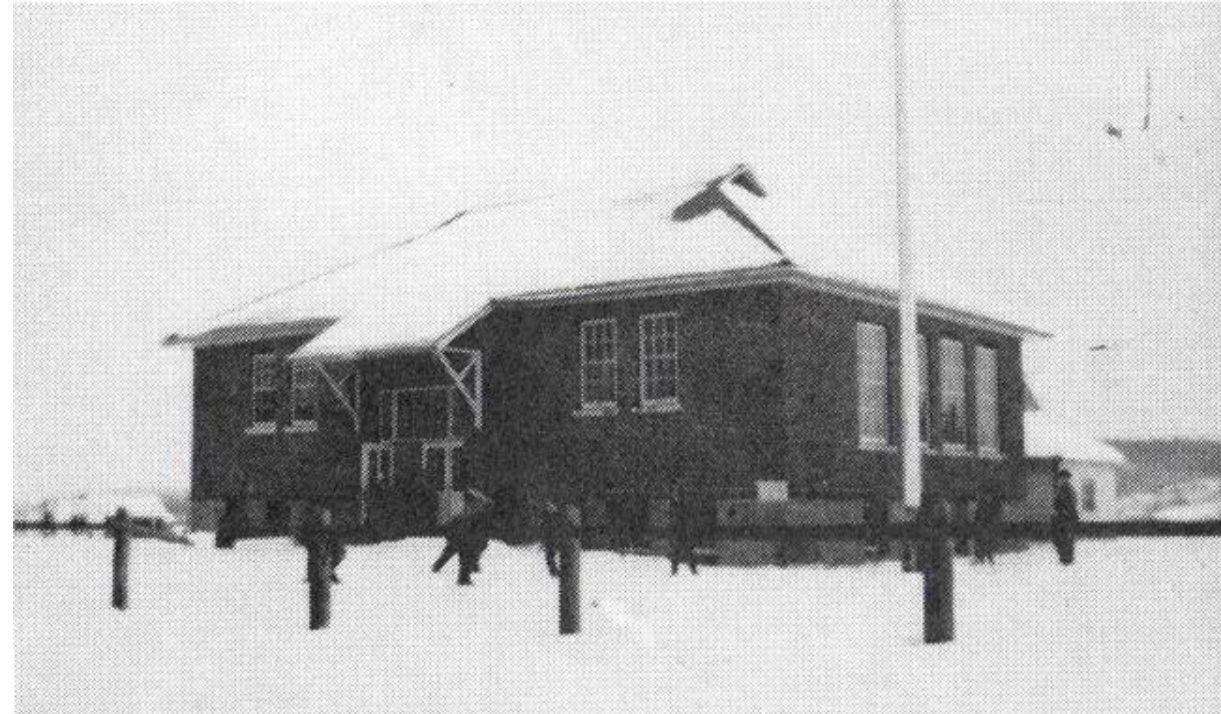
The Parish School served a small farm settlement south of Haliburton Village. It was named after the Parish Family, and was not a church boundary!



SS #6 Dysart

Donald

This was the last section for Dysart Township. The hamlet of Donald grew up around a sawmill later to become the Standard Chemical Plant. The rise in population led to the founding of the Donald School. It still stands as a private building at the junction of the old Haliburton Road and County Road #1. The Chemical is not in such good shape!



SS #1 Guilford
Eagle Lake

A pocket of suitable farmland and the lumber industry attracted a dozen families to the south shore of Eagle Lake. They accessed the area via the Peterson Road from Haliburton Village. The school section contained the usual series of schools: crude log shanty to frame to brick multi-room structure. At least 3 schools were built through the years as the fortunes of Eagle Lake rose and fell with the lumber industry and later, tourism.





SS #1 Guilford

Eagle Lake

Second School



Back row: Karl Barry, Maurice Scott, Lyle Boice, Elta Switzer, Jean Welch, Alice Horsley, Lois Boice, Bernice Cooper
3rd row: Teacher Miss Clue, Evelyon Scott, Mabel Sawyer, Effie Barry, Max Sisson, Ray Sisson, Murray Scott, Ken Teasdale, Jack Kaufman
2nd row: Audrey LaRue, Lorne Cooper, Leslie Bain, Bill Thompson, Doreen Barry, Joyce Kaufman, Marguerite Sisson, Joan Griffin, Nina LaRue, Stella Sawyer
Front row: Bud Teasdale, Lyle Welsh, Bernard Sisson, Bev. Simms, Ken Sawyer, Adrian Cooper, Alfie Sisson & Wayne Griffin

October 1935

SS #2 Guilford

West Guilford

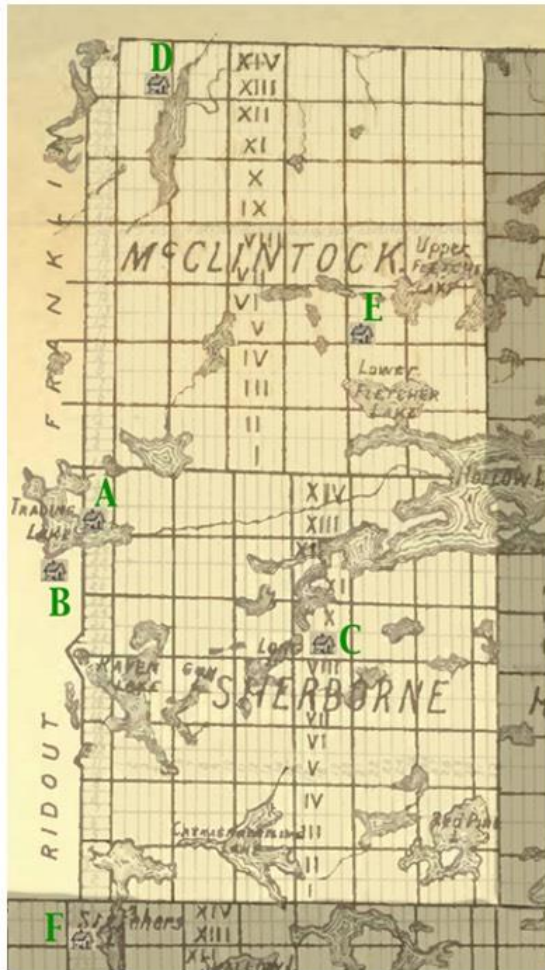
A settlement in western Guilford was established along the Stanhope border around Pine Lake. This settlement had several schools, the last being a solid stone structure still used as a community hall.

A small settlement along the Harburn-Dudley Township line, this school was very isolated from the rest of the municipality. The settlement was later totally abandoned. Dudley Township (to the east of Dysart), never had a school section of its own!



SS #1 Harburn
Harburn

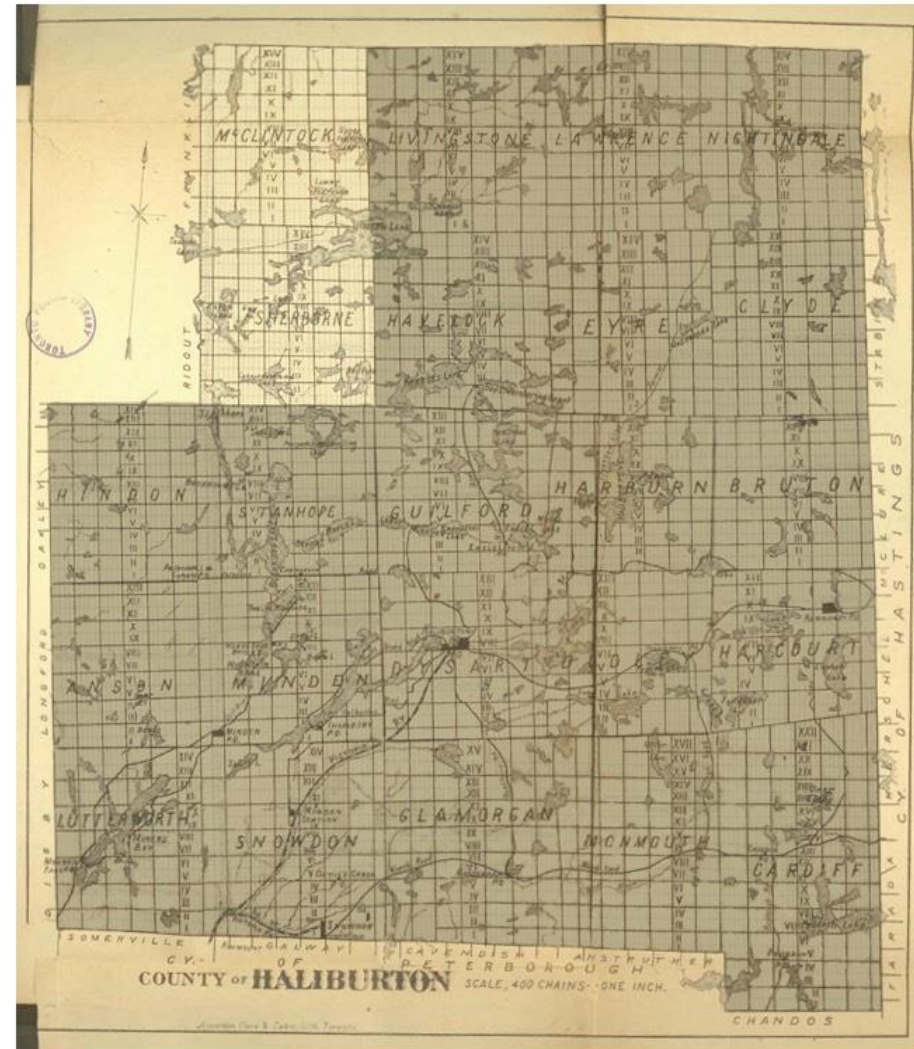
Sherborne & McClintock Twps, Haliburton County



Legend

A school: photo present

Since we could not ascertain school section numbers we assigned letters to relate schools on the map to photos.



If you have any information about, or photos of, the early schools in this area, please leave your name and contact information at the booth displaying the "Heritage Registration" sign.



A Sherborne

Dorset

The only settlement in the township was linked by the Bobcaygeon Road with Haliburton and the Muskoka River watershed with Muskoka. The latter was more important. A settlement was begun at Trading Lake (Dorset) in 1865, and a school soon followed. Dorset had at least 4 school houses in its history.



A Sherborne

Orange Lodge, Dorset

When the original school burned, the children used the Orange Lodge for several years until a new school could be built



A Sherborne

Dorset



B Sherborne

Paint Lake

The actual school was in Muskoka, but children from the area around Raven Lake in Sherborne also attended the union section.



C Sherborne

Hollow Lake

The largest lake in the area is Hollow lake, located just east of Dorset. A number of settlers and lumber workers located in the area. The photo reveals a very small and primitive log "shanty-style" building. It also testifies to the determination of the locals, who desired regular schooling in the face of tremendous obstacles.



E McClintock
Fletcher Lake

The photo of the school on a steep hill typifies the topography of the area. The farm population was small and employment in the lumber industry precarious.

D McClintock

Oxtongue Lake

This settlement was in the extreme northwest corner of Haliburton County. It dealt more with Muskoka District than Haliburton. Oxtongue Lake is called the Western Gateway to Algonquin Park. The small settlement relied on the lumber industry and later the tourism industry.





D McClintock

Oxtongue Lake



F Sherborne, SS #10 Stanhope

Pine Springs

The Pine Springs School served a small settlement along the Bobcaygeon Road between Ox Narrows and Dorset. This fine stone house was the last school in the community and is still standing today!